

ELEV 17

CAT A,B,C

**NELSON**

NZNS

**RNAV (GNSS) SID RWY 02 (1)**

TOWER: 127.4

DELIVERY: 123.3

ATIS: 129.1

UNATTENDED: 127.4

Navigation requirement: RNP 1

**ALL DEPARTURES**

Note 1. Minimum net climb gradient 3.3%

**RWY 02** (200 ft/NM) unless higher stated

**DUMIK ONE PAPA DEPARTURE – RNAV (GNSS) (DUMIK1P)**

Minimum net climb gradient 5.5% (340 ft/NM) to 3700 ft

Airspace containment not assured between RIKRU – DUMIK

- Track 003° to 1200 ft
- Turn LEFT, direct to RIKRU, MAX IAS 180 kt
- Track 306° to DUMIK
- Cross DUMIK at or below 6000 ft

**IDNIM ONE PAPA DEPARTURE – RNAV (GNSS) (IDNIM1P)**

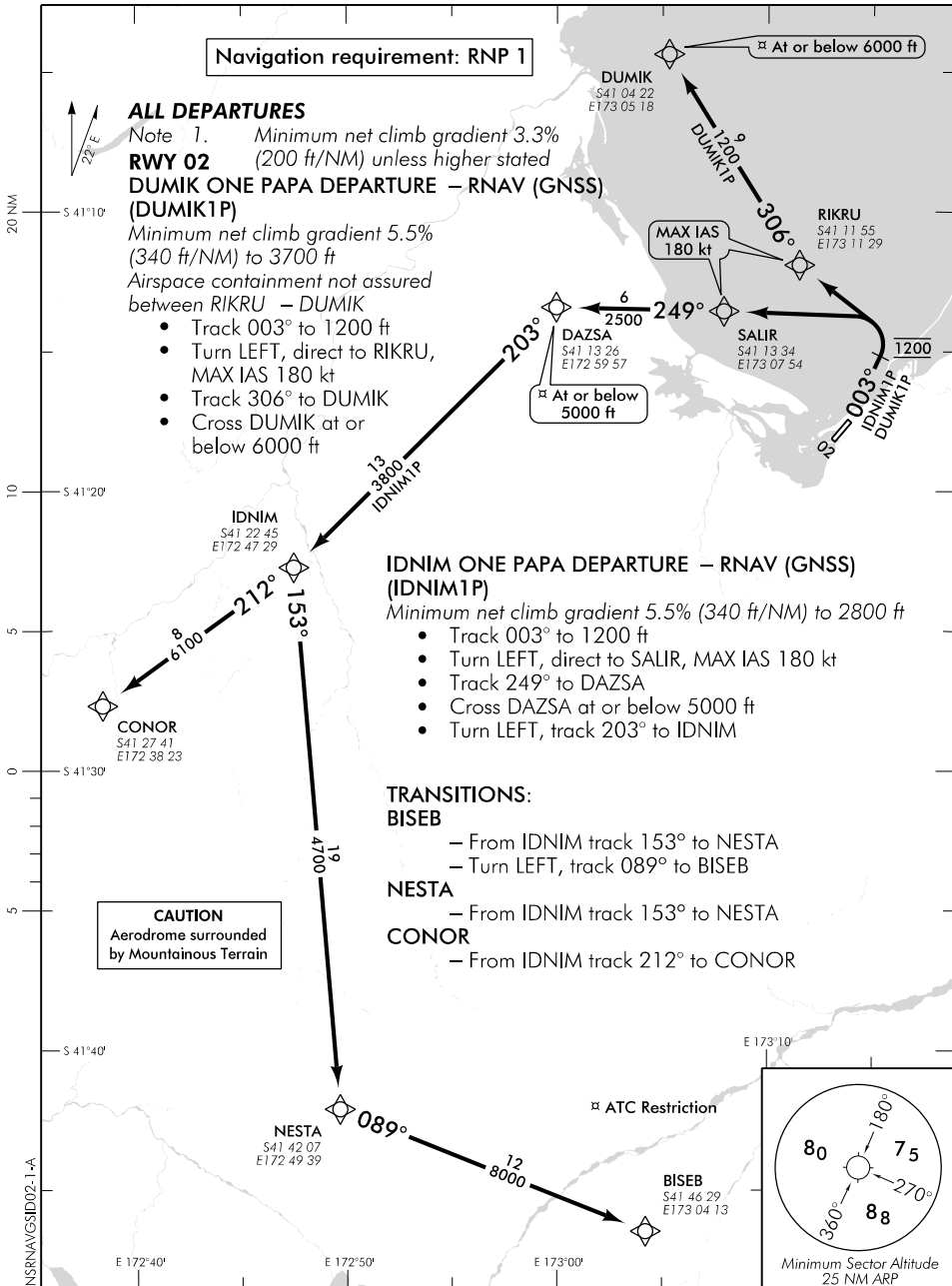
Minimum net climb gradient 5.5% (340 ft/NM) to 2800 ft

- Track 003° to 1200 ft
- Turn LEFT, direct to SALIR, MAX IAS 180 kt
- Track 249° to DAZSA
- Cross DAZSA at or below 5000 ft
- Turn LEFT, track 203° to IDNIM

**TRANSITIONS:**

- BISEB**
- From IDNIM track 153° to NESTA
  - Turn LEFT, track 089° to BISEB
- NESTA**
- From IDNIM track 153° to NESTA
- CONOR**
- From IDNIM track 212° to CONOR

**CAUTION**  
Aerodrome surrounded by Mountainous Terrain



Effective: 8 NOV 18

ELEV 17

CAT A,B,C

# NELSON

NZNS

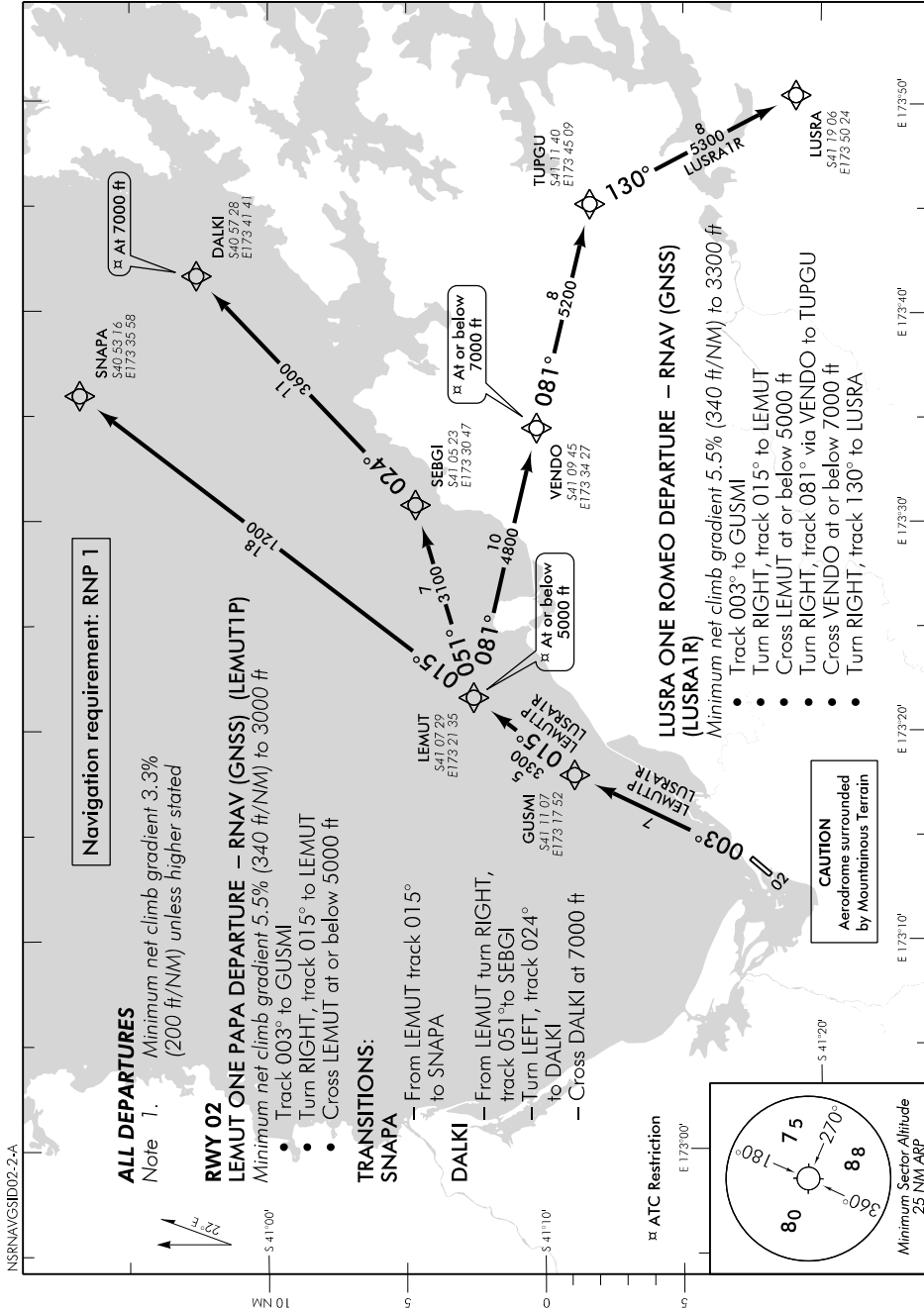
## RNAV (GNSS) SID RWY 02 (2)

TOWER: 127.4

DELIVERY: 123.3

ATIS: 129.1

UNATTENDED: 127.4



**Navigation requirement: RNP 1**

### ALL DEPARTURES

Note 1. Minimum net climb gradient 3.3% (200 ft/NM) unless higher stated

### RWY 02

#### LEMUT ONE PAPA DEPARTURE – RNAV (GNSS) (LEMUT1P)

Minimum net climb gradient 5.5% (340 ft/NM) to 3000 ft

- Track 003° to GUSMI
- Turn RIGHT, track 015° to LEMUT
- Cross LEMUT at or below 5000 ft

### TRANSITIONS:

#### SNAPA

- From LEMUT track 015° to SNAPA

#### DALKI

- From LEMUT turn RIGHT, track 051° to SEBGI
- Turn LEFT, track 024° to DALKI
- Cross DALKI at 7000 ft

#### LUSRA ONE ROMEO DEPARTURE – RNAV (GNSS) (LUSRA1R)

Minimum net climb gradient 5.5% (340 ft/NM) to 3300 ft

- Track 003° to GUSMI
- Turn RIGHT, track 015° to LEMUT
- Cross LEMUT at or below 5000 ft
- Turn RIGHT, track 081° via VENDO to TUPGU
- Cross VENDO at or below 7000 ft
- Turn RIGHT, track 130° to LUSRA

**CAUTION**  
Aerodrome surrounded by Mountainous Terrain

