

ELEV 17

CAT A,B,C

NELSON

NZNS

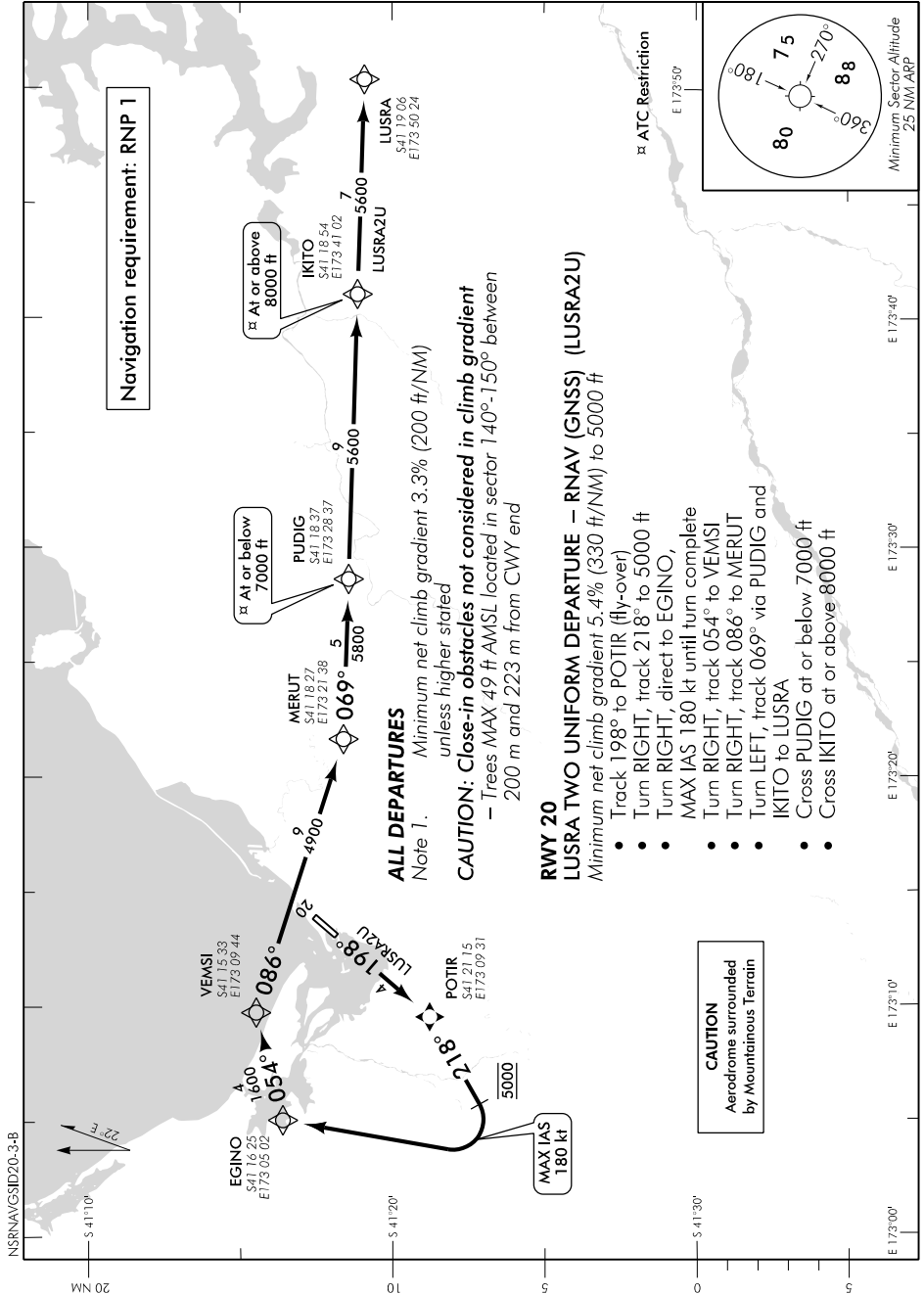
RNAV (GNSS) SID RWY 20 (3)

TOWER: 127.4

DELIVERY: 123.3

ATIS: 129.1

UNATTENDED: 127.4



Changes from 8 NOV 18: MNM net climb gradient, mandatory turn altitude raised, VEMSI crossing restriction removed.

ELEV 17

CAT A,B,C

NELSON

NZNS

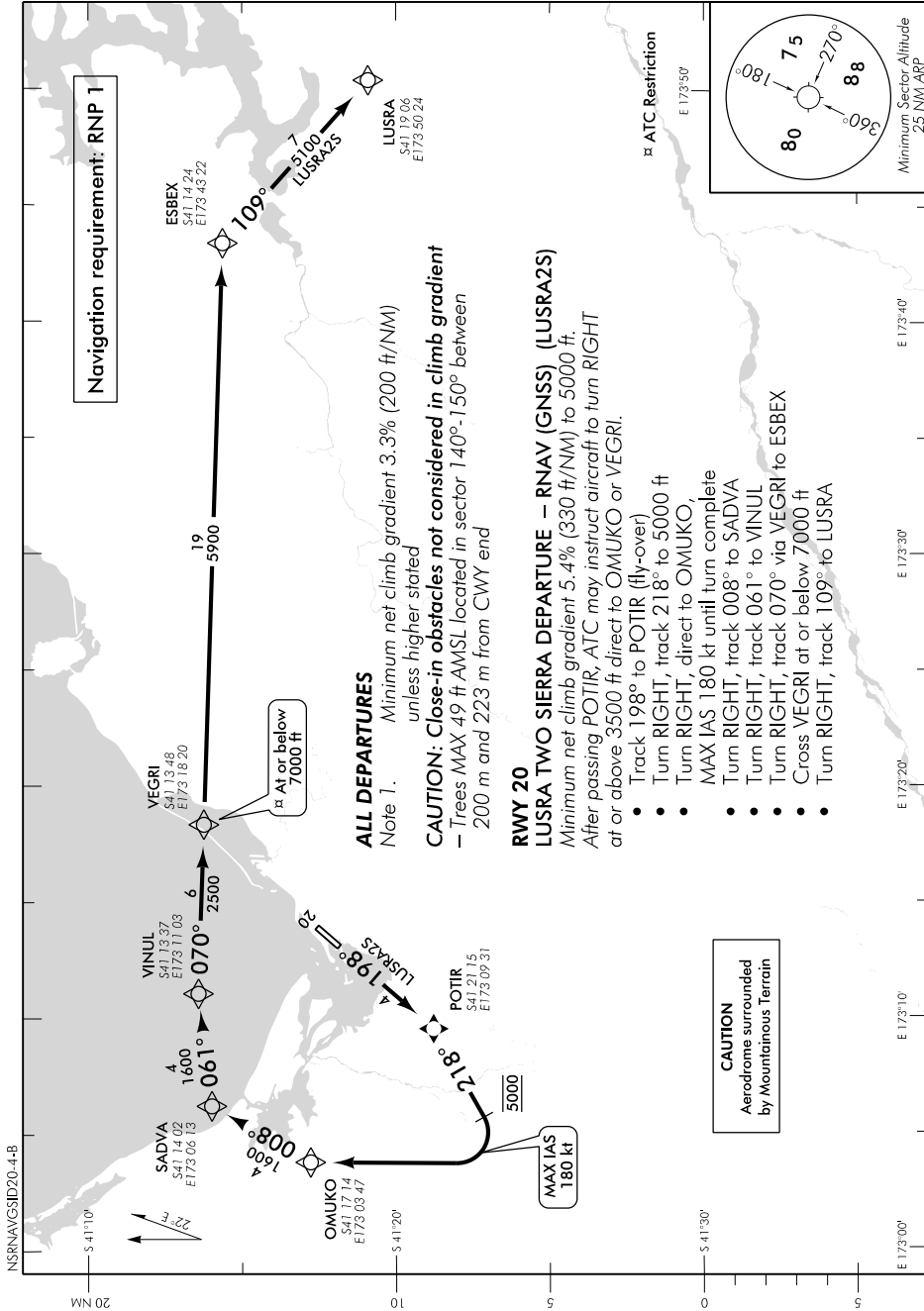
RNAV (GNSS) SID RWY 20 (4)

TOWER: 127.4

DELIVERY: 123.3

ATIS: 129.1

UNATTENDED: 127.4



Changes from 8 NOV 18: MINM net climb gradient, mandatory turn altitude raised, VINUL crossing restriction removed.

Navigation requirement: RNP 1

ALL DEPARTURES

Note 1. Minimum net climb gradient 3.3% (200 ft/NM) unless higher stated

CAUTION: Close-in obstacles not considered in climb gradient
- Trees MAX 49 ft AMSL located in sector 140°-150° between 200 m and 223 m from CWY end

RWY 20

LUSRA TWO SIERRA DEPARTURE - RNAV (GNSS) (LUSRA2S)
Minimum net climb gradient 5.4% (330 ft/NM) to 5000 ft

After passing POTIR, ATC may instruct aircraft to turn RIGHT at or above 3500 ft direct to OMUKO or VEGRI.

- Track 198° to POTIR (fly-over)
- Turn RIGHT, track 218° to 5000 ft
- Turn RIGHT, direct to OMUKO, MAX IAS 180 kt until turn complete
- Turn RIGHT, track 008° to SADVA
- Turn RIGHT, track 061° to VINUL
- Turn RIGHT, track 070° via VEGRI to ESBEX
- Cross VEGRI at or below 7000 ft
- Turn RIGHT, track 109° to LUSRA

CAUTION
Aerodrome surrounded by Mountainous Terrain

Effective: 31 JAN 19