

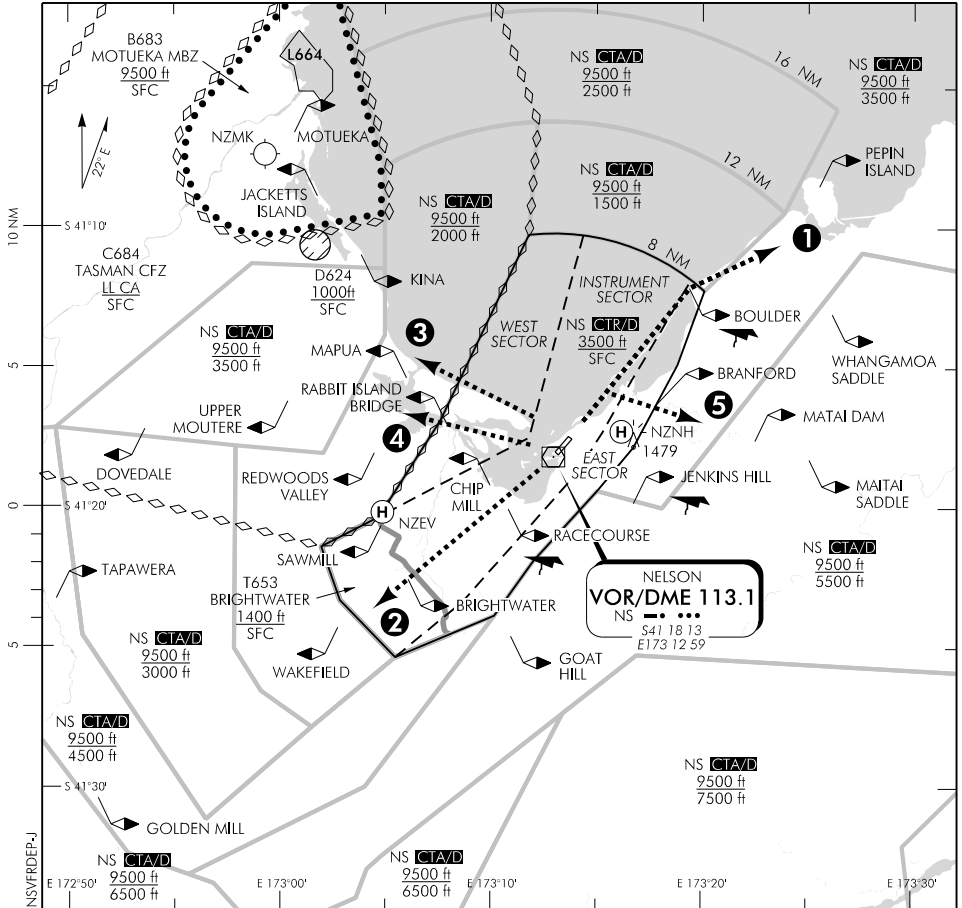
ELEV 17

NZNS

TOWER: 127.4

ATIS: 129.1

UNATTENDED: 127.4

**NELSON****VFR DEPARTURE PROCEDURES**

Changes from 10 NOV 16: All airspace updated, VRPs updated, new departure procedures.

**For VFR flights departing Nelson**

Subject to meteorological conditions, amended altitude instructions may be issued. More direct plain language clearances may be issued on request, or in periods of low traffic density. Report when clear of the Nelson CTR/D.

**① BOULDER DEPARTURE**

Track via Boulder Bank to BOULDER 1500 ft or below.

**② BRIGHTWATER DEPARTURE**

Track via BRIGHTWATER 1500 ft or below.

**③ BAY DEPARTURE**

Track via the Northern beach of Rabbit Island 1500 ft or below.

**④ BRIDGE DEPARTURE**

Track to RABBIT ISLAND BRIDGE 1500 ft or below.

**⑤ BRANFORD DEPARTURE**

RWY 02 – Track Via Nelson Port to BRANFORD 2000 ft or below.

RWY 20 – Cross overhead Nelson airfield 1500 ft or above, then to BRANFORD 2000 ft or below. A left turn direct to BRANFORD available on request.

**Effective: 8 NOV 18**

