

ELEV 5

NZNV

# INVERCARGILL

## VOR ARRIVAL – RWY 04/22

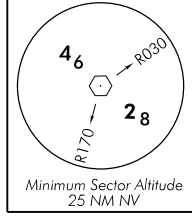
TOWER: 118.5 122.4

ATIS: 127.0

UNATTENDED: 118.5



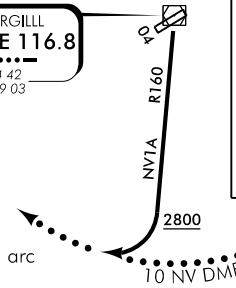
INVERCARGILL  
**VOR/DME 116.8**  
 NV --- --- ---  
 S46 24 42  
 E168 19 03



### RWY 04

#### INVERCARGILL ONE ALFA (NV1A)

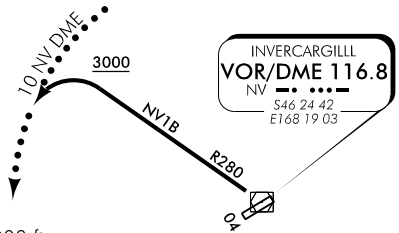
- Crossing NV VOR descend as cleared to not below 2800 ft
- Track outbound R160 and turn RIGHT to join 10 DME arc for VOR/DME RWY 04 approach



### RWY 04

#### INVERCARGILL ONE BRAVO (NV1B)

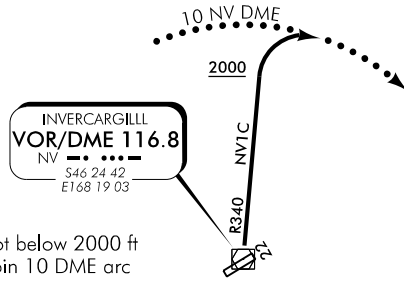
- Crossing NV VOR descend as cleared to not below 3000 ft
- Track outbound R280 and turn LEFT to join 10 DME arc for VOR/DME RWY 04 approach



### RWY 22

#### INVERCARGILL ONE CHARLIE (NV1C)

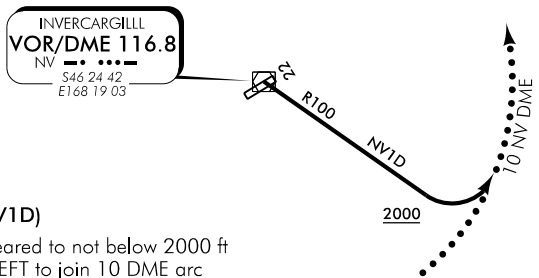
- Crossing NV VOR descend as cleared to not below 2000 ft
- Track outbound R340 and turn RIGHT to join 10 DME arc for VOR/DME RWY 22 approach



### RWY 22

#### INVERCARGILL ONE DELTA (NV1D)

- Crossing NV VOR descend as cleared to not below 2000 ft
- Track outbound R100 and turn LEFT to join 10 DME arc for VOR/DME RWY 22 approach

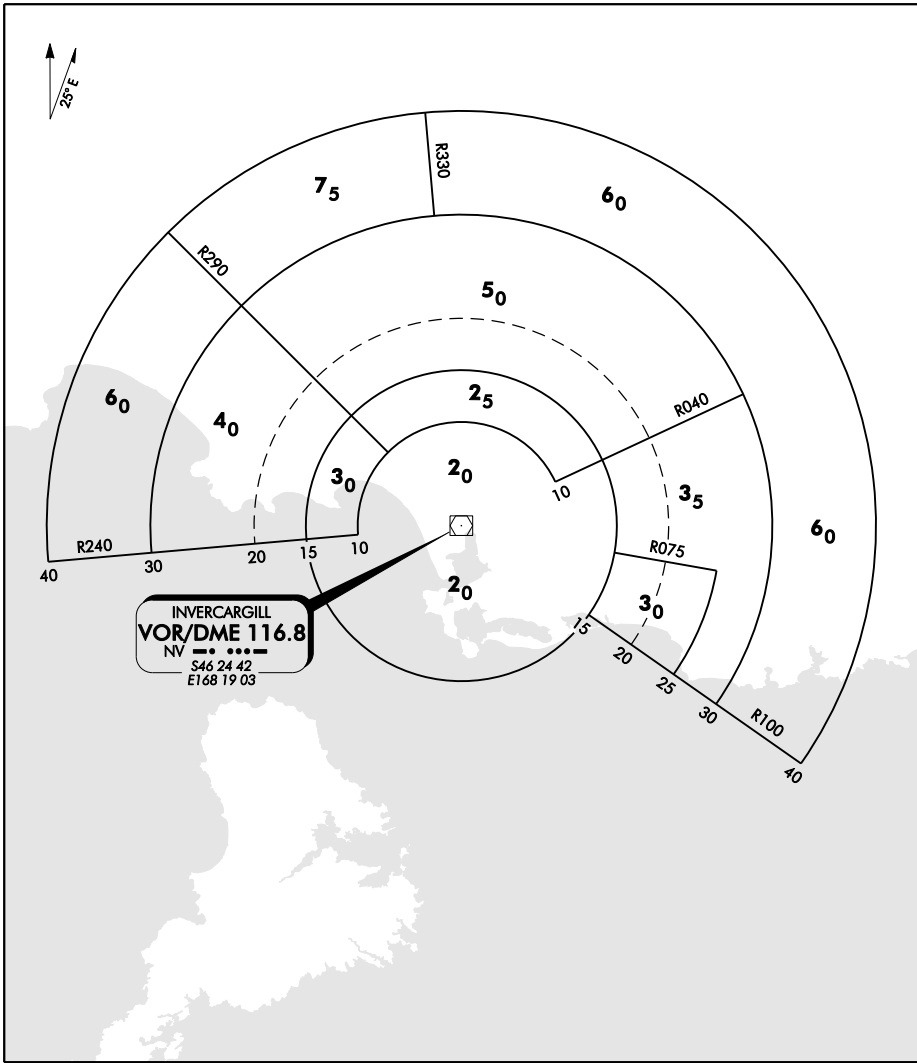


NZVAR04-22-B

Changes from 12 FEB 09: HF-FREQ 5592 removed.

Effective: 6 FEB 14

# INVERCARGILL VOR/DME MRA SECTORS (VORSEC)



NWVORSEC-B

Effective: 29 MAY 14

© Civil Aviation Authority

# INVERCARGILL VOR/DME MRA SECTORS (VORSEC)