

ELEV 5

CAT A,B,C,D

# INVERCARGILL

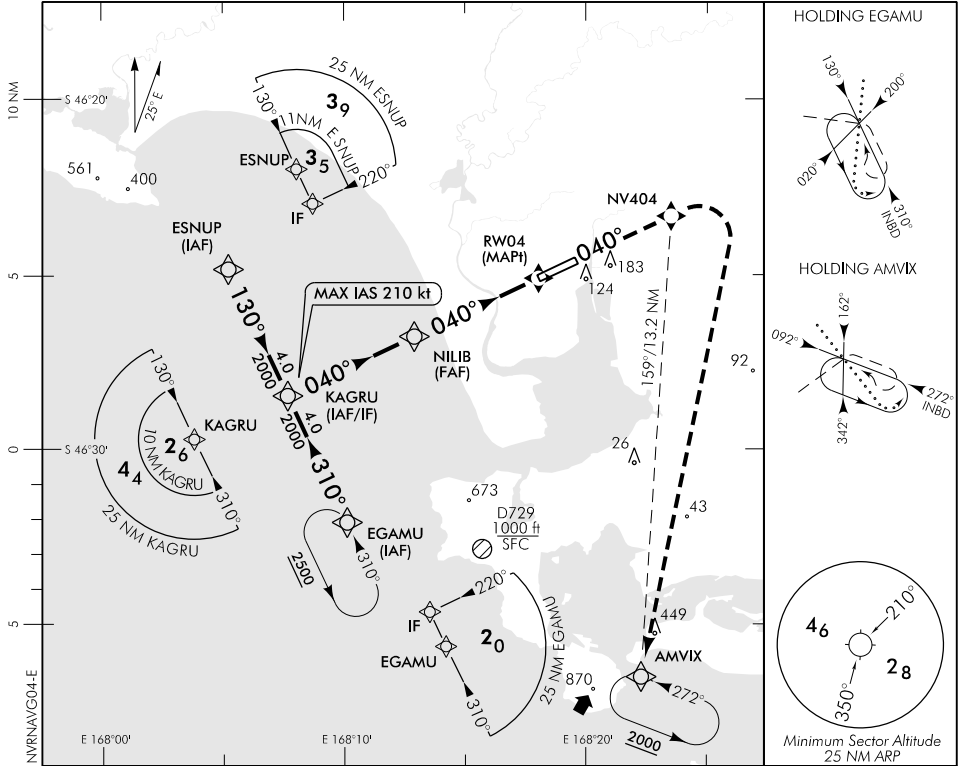
RWY 04 THR ELEV 5

RNAV (GNSS) RWY 04

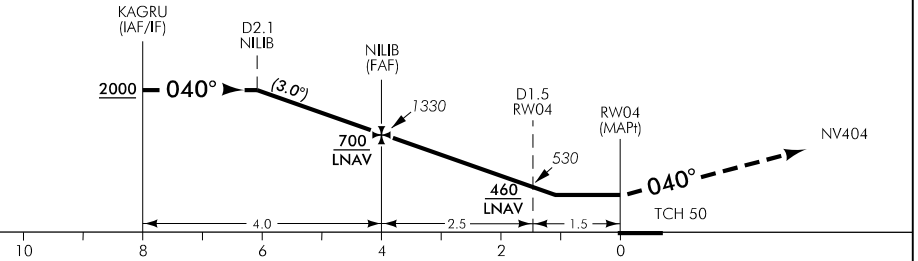
TOWER: 118.5 122.4

ATIS: 127.0

UNATTENDED: 118.5



Use Invercargill QNH



**MISSED APCH:** MAX IAS 220 kt until turn complete. Track 040° to NV404 (fly over), turn RIGHT direct to AMVIX 3000

DISTANCE TO WPT	KAGRU	3	2	1	NILIB	3	2	1.1	RW04
Advisory Altitude 3°	2610	2290	1970	1650	1330	1010	690	MDA/DA	MDA
Category	A			B		C		D	
LNAV/VNAV*	400(395) – 1500					400(395) – 2000			
LNAV	400(395) – 1500					400(395) – 2000			
Circling	480(475) – 1900		510(505) – 2800			630(625) – 3700		700(695) – 4600	

\* Valid to AD temperature -10° C. Use of remote QNH NA

Changes from 6 FEB 14: Missed approach instructions.

**Effective: 13 NOV 14**

ELEV 5

CAT A,B,C,D

# INVERCARGILL

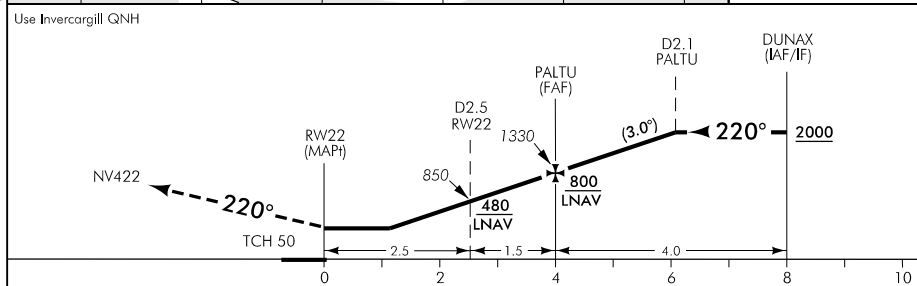
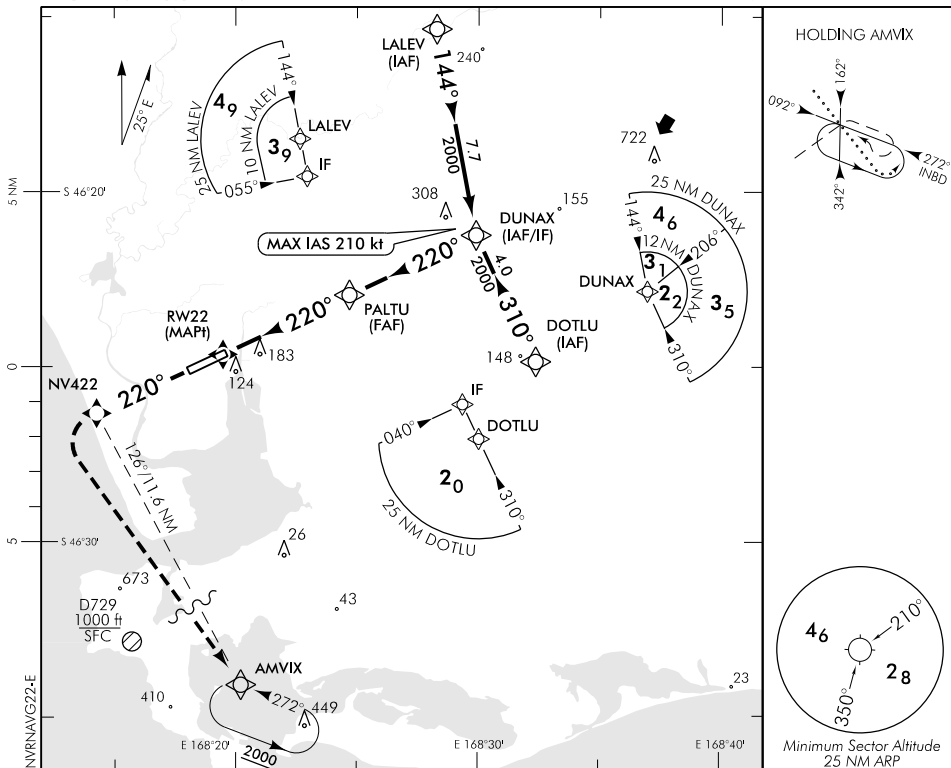
RWY 22 THR ELEV 4

RNAV (GNSS) RWY 22

TOWER: 118.5 122.4

ATIS: 127.0

UNATTENDED: 118.5



**MISSED APCH:** MAX IAS 240 kt until turn complete. Track 220° to NV422 (fly over), turn LEFT direct to AMVIX 3000

DISTANCE to WPT	RWY22	1.2	2	3	PALTU	1	2	3	DUNAX
Advisory Altitude 3°	MDA	DA/MDA	690	1010	1330	1650	1970	2290	2610
Category	A		B			C		D	
LNAV/VNAV*	430(425) - 1500				430(425) - 2000				
LNAV	430(425) - 1500				430(425) - 2000				
Circling	480(475) - 1900		510(505) - 2800			630(625) - 3700		700(695) - 4600	

\* Valid to AD temperature -10° C. Use of remote QNH NA

Changes from 6 FEB 14: Missed approach instructions.

**Effective: 13 NOV 14**