

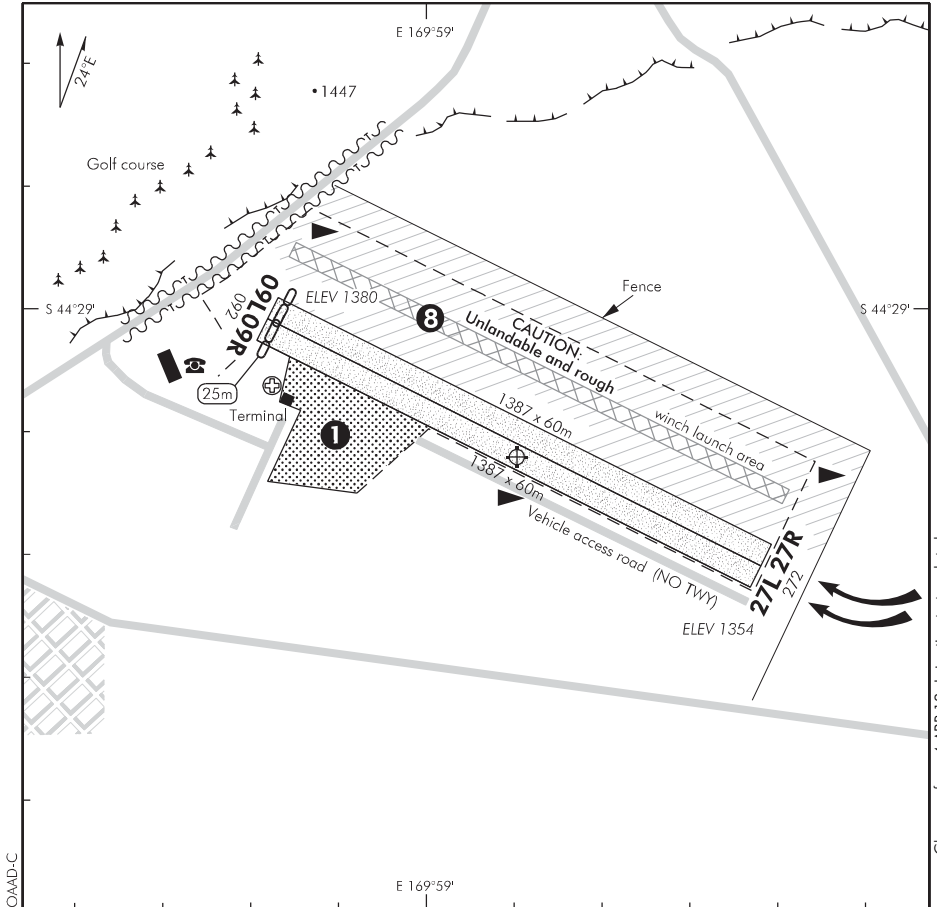
ELEV 1380

NZOA

NON-CERTIFICATED

**OMARAMA  
AERODROME**

UNATTENDED: 119.1 133.55 134.00



- ❶ Aircraft parking areas, hangars and cafe.
2. Circuit: RWY 09 L/R — Left hand  
RWY 27 L/R — Right hand
3. Telephone at Country Time Resort Hotel. First Aid and Internet at terminal.
4. Intensive gliding operations September to April — 7 days. Occasional winching to north of RWY 09L/27R. Glider winching wire may reach up to 3000ft AGL from 09L/27R.
5. Glider/gliding communication operations outside local area frequency 119.1 use gliding frequencies 133.55 and 134.00. Call intentions on these frequencies.
6. **CAUTION:** Daily overnight irrigation during summer months from late afternoon to early morning using visible towed K-Line pipes with sprinklers the full length of one parallel Left or Right runway. The runway being irrigated will be marked and closed, land clear on the other parallel Left or Right runway. Note poor braking on wet grass during and after irrigation.
7. Up to 3 rows of gliders waiting to launch will line up and park using RWY 09R/27L. Arriving/ departing aircraft should use RWY 09L/27R to maintain separation and avoid overflying parked aircraft.
- ❸ **CAUTION:** Glider winch launch area — can be mistaken for a runway. Do NOT use.

S 44 29 12 E 169 59 10

**Effective: 3 APR 14**

© Civil Aviation Authority

**OMARAMA  
AERODROME**

NZOA

**RWY**

RWY	SFC	Strength	Gp	Slope	ASDA	Take-off distance			LDG DIST
						1:20	1:30	1:40	
09R 27L	Gr	ESWL 2565	8	0.59D 0.59U	1387	1387 1362			1362 1387
09L 27R	Gr	ESWL 2565	8	0.59D 0.59U	1387	1387 1362			1362 1387

**LIGHTING**

Nil

**FACILITIES**

Fuel: Z Energy Avgas 100, Access via Z card

On site cafe open daily OCT/APR

Toilets/1st aid inside terminal

Aircraft heavy duty tie-down lines

**SUPPLEMENTARY**Operator: Omarama Airfield Ltd, PO Box 284, Queenstown  
Fax (03) 442 7309Terry Jones  
Tel (027) 452 1498  
Email: morganjones@xtra.co.nzSecondary onsite contact:  
Guy Sanders Tel (027) 458 7010

Available for general use without the permission of the operator.

Landing fees: Payable for ALL aircraft.

Annual multiple fees may be paid in advance by application to:  
Omarama Airfield Ltd, PO Box 284, Queenstown.

Scale of fees, honesty box and envelopes located adjacent to fuel pump.

NB. An automatic recording system for monitoring landings and aircraft movement is installed.  
Unpaid landing fees will be invoiced to the aircraft operator and will include additional  
administration charges.