

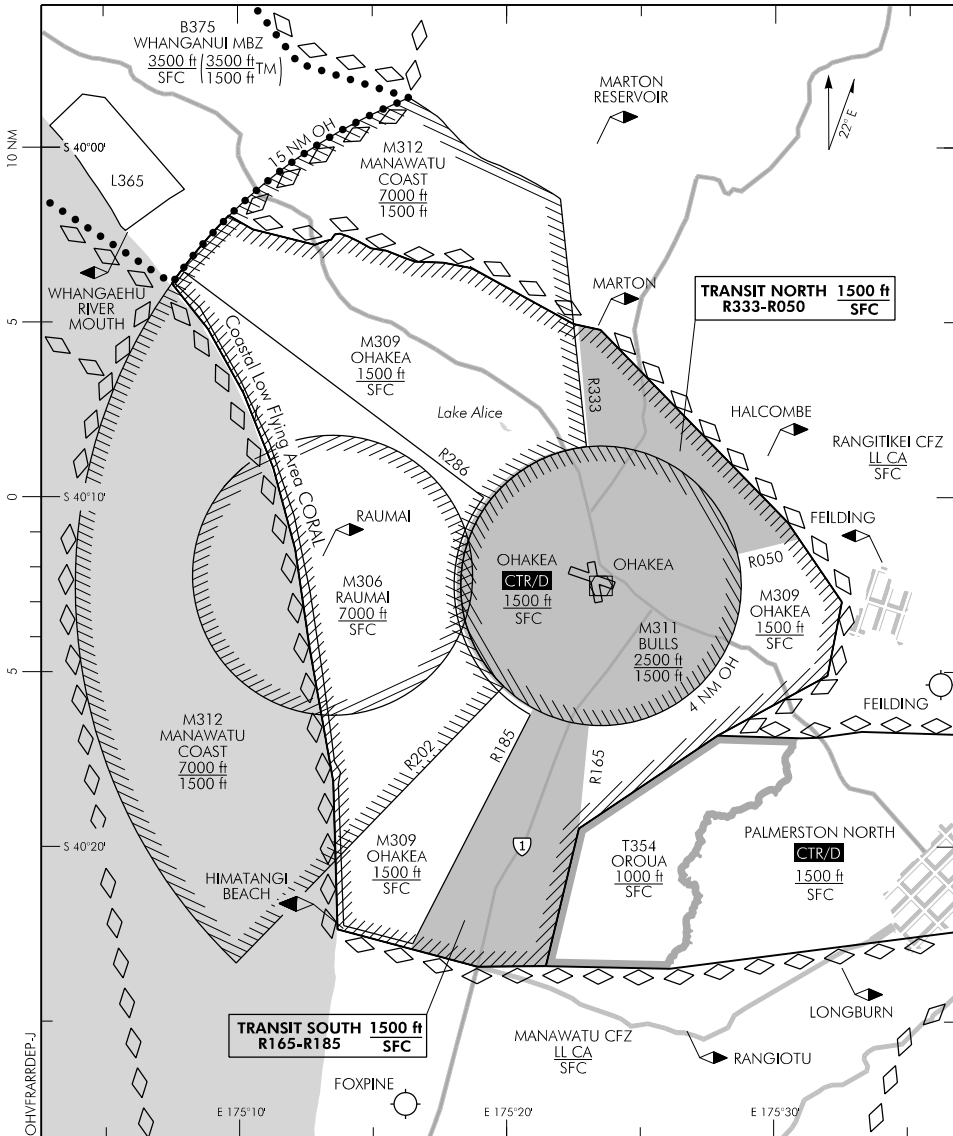
ELEV 164

# OHAKEA (MIL)

NZOH

## VFR ARRIVAL/DEPARTURE PROCEDURES (1)

TOWER: 134.5 255.4 GROUND: 122.1 258.5 UNATTENDED: 134.5 ATIS: 135.0 280.4



Transit North: Being that area contained within a radius of 4 NM OH VOR/DME, thence north within the area bordered by R333 OH to the west and R050 OH to the east.

Transit South: Being that area contained within a radius of 4 NM OH VOR/DME thence south within the area bordered by R185 OH to the west and R165 OH/T354 to the east.

**Effective: 9 NOV 17**

# OHAKEA (MIL)

## VFR ARRIVAL/DEPARTURE PROCEDURES (1)

Changes from 10 NOV 16: Northern radial associated with Coastal Low Flying Area.

ELEV 164

**OHAKEA (MIL)**

NZOH

**VFR ARRIVAL/DEPARTURE PROCEDURES (2)**

TOWER: 134.5 255.4 GROUND: 122.1 258.5 UNATTENDED: 134.5 ATIS: 135.0 280.4

**FOR USE BY MILITARY AIRCRAFT ONLY****VFR Arrival/Departure Procedures**

For Military VFR flights entering M309/Ohakea CTR/D and landing at Ohakea, or departing Ohakea and vacating M309/Ohakea CTR/D.

Aircraft will be cleared via:

Transit North, or Transit South, or other routes (plain language instructions issued).

**Arrival**

For entry via Transit North or Transit South and east of, contact Ohakea Tower 134.5 MHz or 255.4 MHz.

For entry via other routes contact Ohakea Approach 125.1 MHz or 263.4 MHz.

On receipt of the appropriate Arrival Procedure instructions, or plain language instructions, follow the assigned procedure and comply with further instructions from Ohakea Control or Ohakea Tower.

*Note: If a clearance is not available, remain outside M309/Ohakea CTR/D.*

**Communications Failure**

Follow assigned procedure to Ohakea aerodrome, **Squawk 7600**.

**Tower on watch:**

Join downwind for the appropriate runway or landing area at the normal circuit altitude for aircraft type. Expect light signals.

**Tower off watch:**

Carry out Standard Overhead Joining Procedure.

**Departure**

Contact Ohakea Ground 122.1 MHz or 258.5 MHz for departure instructions and taxi clearance.

Departing flights are to be established on cleared track within 4 NM of Ohakea VOR/DME, or advise ATC if unable.

**Communications Failure**

Vacate M309/Ohakea CTR/D via the assigned procedure. **Squawk 7600**. Maintain VFR.