

ELEV 164

CAT A,B,C,D

OHAKEA

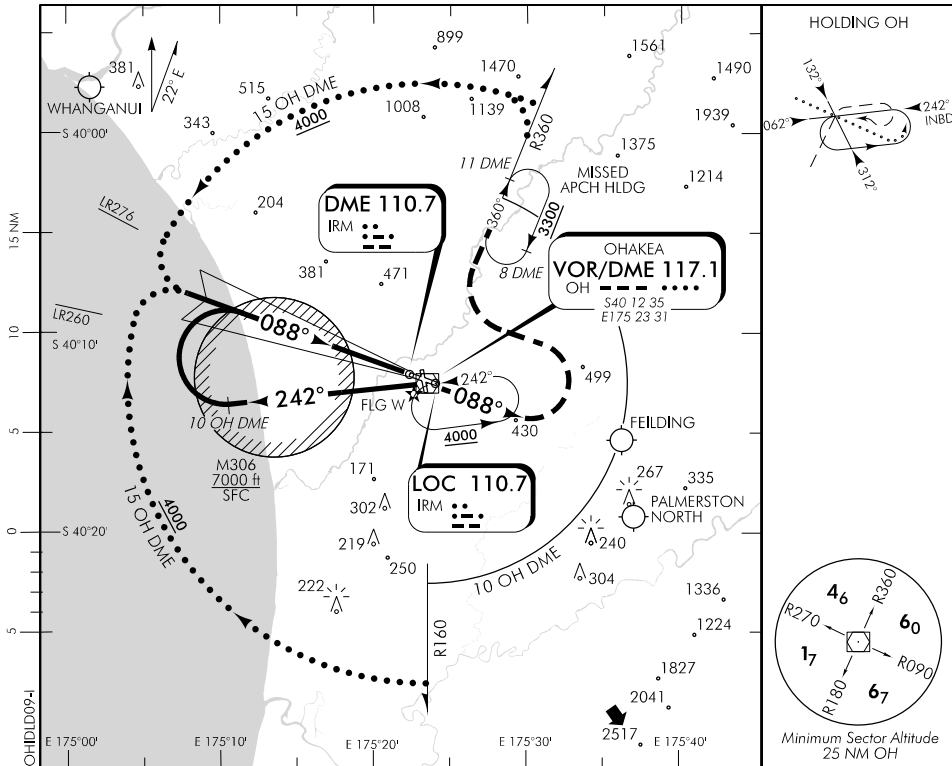
RWY 09 THR ELEV 150

ILS/DME or LOC/DME RWY 09

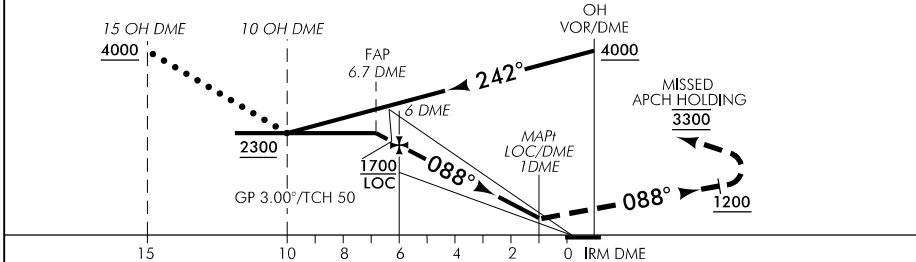
CONTROL: 125.1 128.5 123.2 263.4

TOWER: 134.5 255.4

ATIS: 135.0 280.4



Use Ohakea QNH



MISSED APCH: MAX IAS 185 kt. Track 088° to **1200**, turn LEFT track R360, enter missed APCH HLDG **3300**

IRM DME DIST	9	8	7	FAP 6.7	6	5	4	3	2	MAP1
Advisory Altitude 3°	3060	2730	2410	2300	2080	1750	1430	1110	790	DA/MDA
Category	A			B			C		D	
ILS/DME (Cat 1)	350(200) – 800									
ILS/DME LH ALS U/S	400(250) – 1200									
LOC/DME	630(480) – 1500					630(480) – 1900				
Circling	730(566) – 1900			800(636) – 2800			1060(896) – 4000		1100(936) – 4600	

Effective: 30 MAR 17

Changes from 26 MAY 16: MNM SECT ALT 25 NM.

ELEV 164

CAT A,B,C,D

OHAKEA

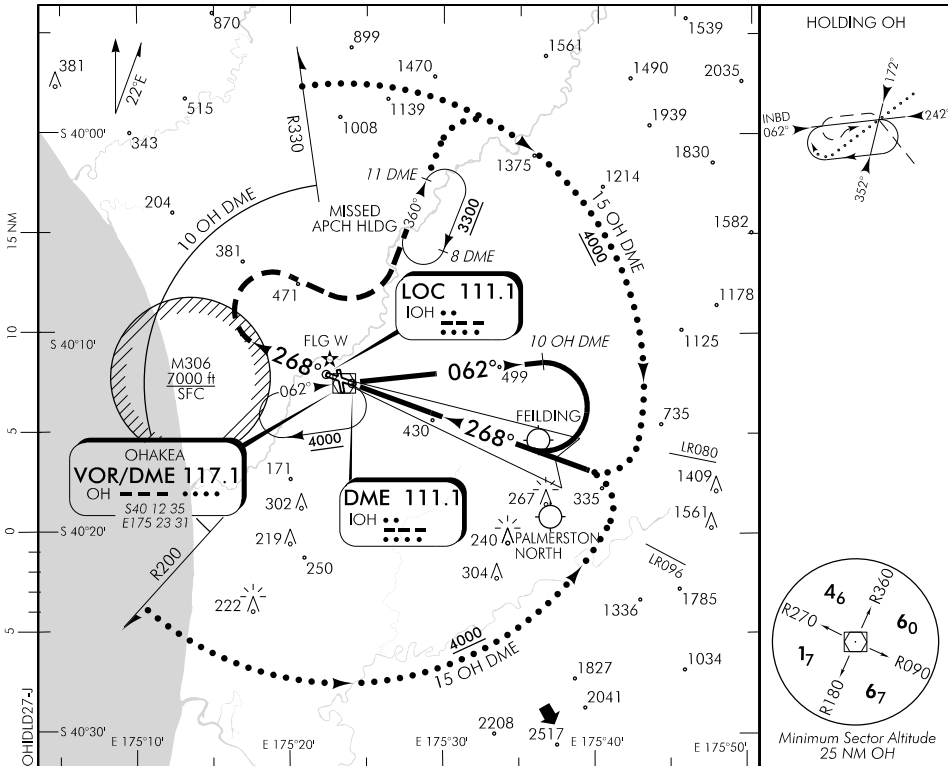
RWY 27 THR ELEV 149

ILS/DME or LOC/DME RWY 27

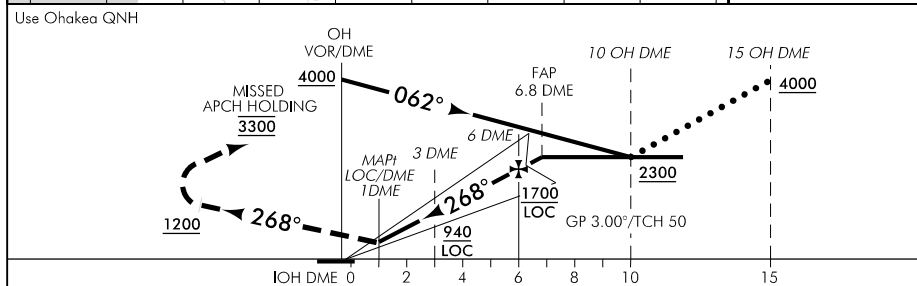
CONTROL: 125.1 128.5 123.2 263.4

TOWER: 134.5 255.4

ATIS: 135.0 280.4



Changes from 26 MAY 16: MINM SECT ALT 25 NM.



MISSED APCH: MAX IAS 185 kt. Track 268° to 1200, turn RIGHT track R360, enter missed APCH HLDG 3300

IOH DME DIST	MAPt 1	2	3	4	5	6	FAP 6.8	7	8	9
Advisory Altitude 3°	DA/MDA	790	1110	1430	1750	2080	2300	2410	2730	3060
Category		A			B		C		D	
ILS/DME (Cat 1)		450(301) – 800								
ILS/DME LH ALS U/S		500(351) – 1200								
LOC/DME		680(531) – 1500				680(531) – 2300				
Circling		730(566) – 1900		800(636) – 2800			1060(896) – 4000		1100(936) – 4600	

Effective: 30 MAR 17