

ELEV 164

CAT A,B,C,D

OHAKEA

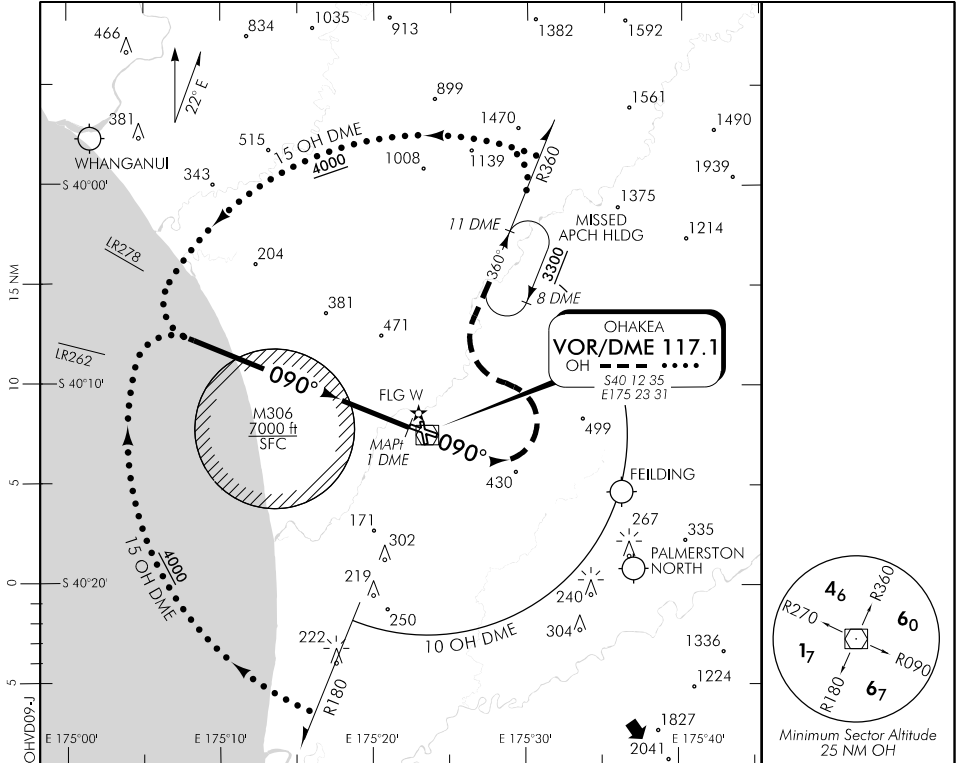
RWY 09 THR ELEV 150

VOR/DME RWY 09

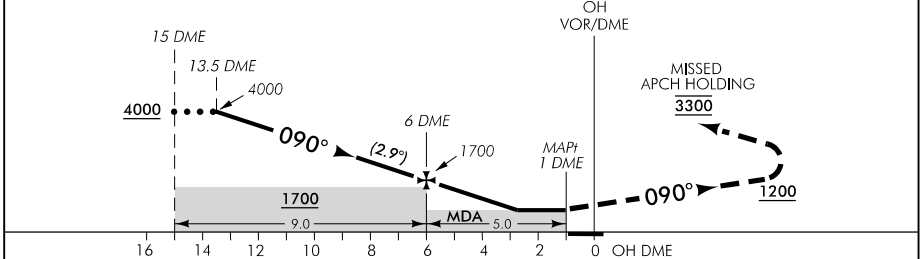
CONTROL: 125.1 128.5 123.2 263.4

TOWER: 134.5 255.4

ATIS: 135.0 280.4



Use Ohakea QNH



MISSED APCH: MAX IAS 185 kt. Track 090° to 1200, turn LEFT track R360, enter missed APCH HLDG 3300

OH DME DIST	10	9	8	7	6	5	4	3	2.8	MAPt 1
Advisory Altitude 5%	2900	2600	2300	2000	1700	1400	1100	800	MDA	MDA
Category	A			B		C		D		
VOR/DME	740(590) – 1500					740(590) – 2300				
Circling	740(576) – 1900		800(636) – 2800			1060(896) – 4000		1100(936) – 4600		

Effective: 30 MAR 17

Changes from 26 MAY 16: MNM SECT ALT 25 NM.

ELEV 164

CAT A,B,C,D

OHAKEA

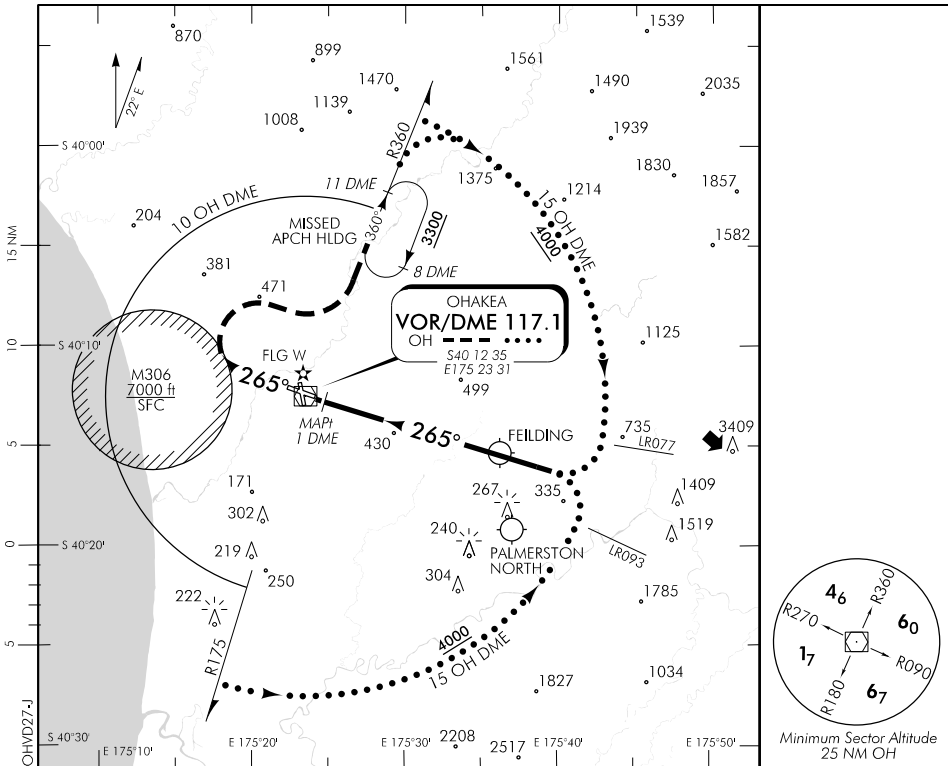
RWY 27 THR ELEV 149

VOR/DME RWY 27

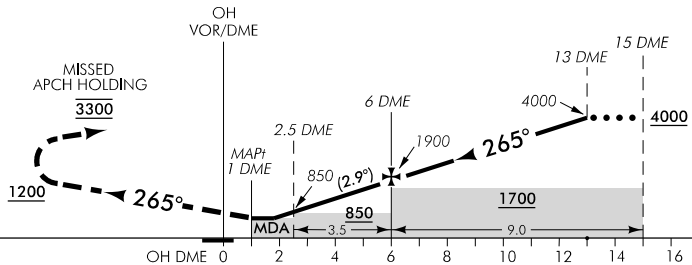
CONTROL: 125.1 128.5 123.2 263.4

TOWER: 134.5 255.4

ATIS: 135.0 280.4



Use Ohakea QNH



MISSED APCH: MAX IAS 185 kt. Track 265° to **1200**, turn RIGHT track R360, enter missed APCH HLDG **3300**

OH DME DIST	MAPt 1	1.9	2.5	3	4	5	6	7	8	9	10
Advisory Altitude 5%	MDA	MDA	850	1000	1300	1600	1900	2200	2500	2800	3100
Category	A		B			C			D		
VOR/DME	680(531) – 1500					680(531) – 2300					
Circling	730(566) – 1900		800(636) – 2800			1060(896) – 4000			1100(936) – 4600		

Changes from 26 MAY 16: MINM SECT ALT 25 NM.

Effective: 30 MAR 17