

ELEV 164

CAT A,B,C,D

OHAKEA

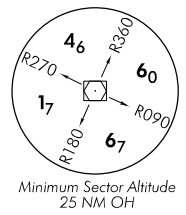
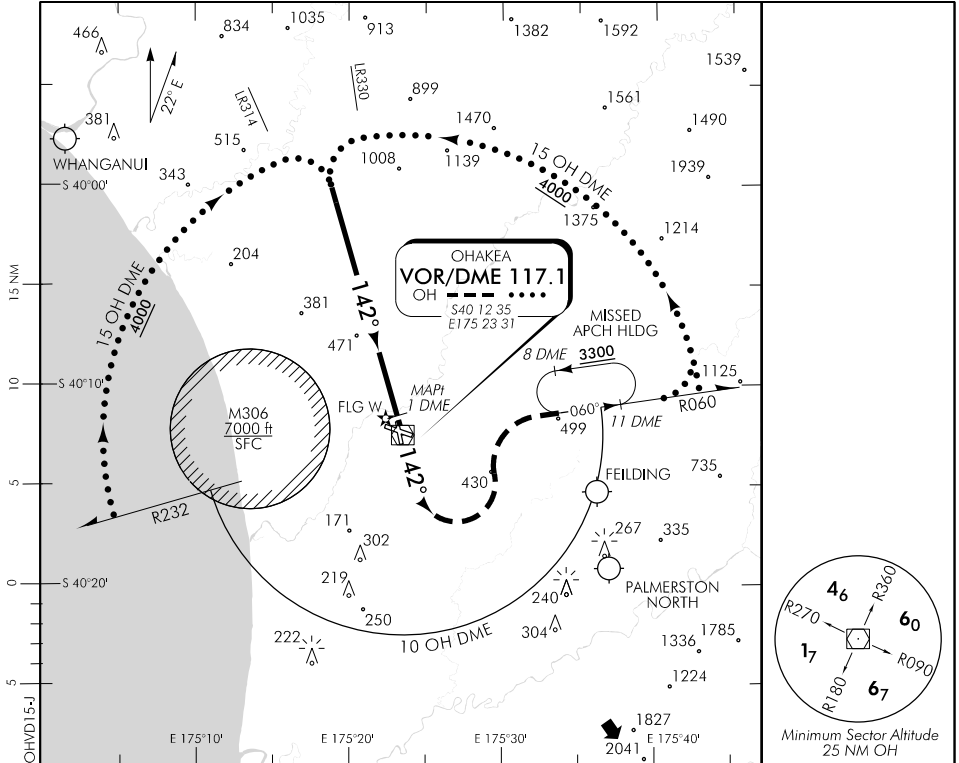
RWY 15 THR ELEV 164

VOR/DME RWY 15

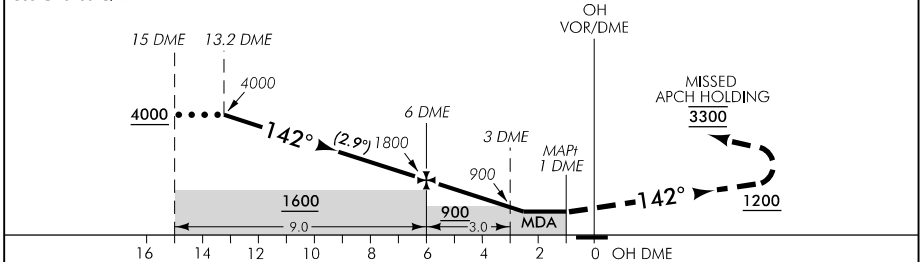
CONTROL: 125.1 128.5 123.2 263.4

TOWER: 134.5 255.4

ATIS: 135.0 280.4



Use Ohakea QNH



MISSED APCH: MAX IAS 185 kt. Track 142° to 1200, turn LEFT track R060, enter missed APCH HLDG 3300

OH DME DIST	10	9	8	7	6	5	4	3	2.5	MAPt 1
Advisory Altitude 5%	3000	2700	2400	2100	1800	1500	1200	900	MDA	MDA
Category	A		B			C		D		
VOR/DME	740(576) – 1600					740(576) – 2800				
Circling	740(576) – 1900		800(636) – 2800			1060(896) – 4000		1100(936) – 4600		

Effective: 30 MAR 17

Changes from 26 MAY 16: MNM SECT ALT 25 NM.

ELEV 164

CAT A,B,C,D

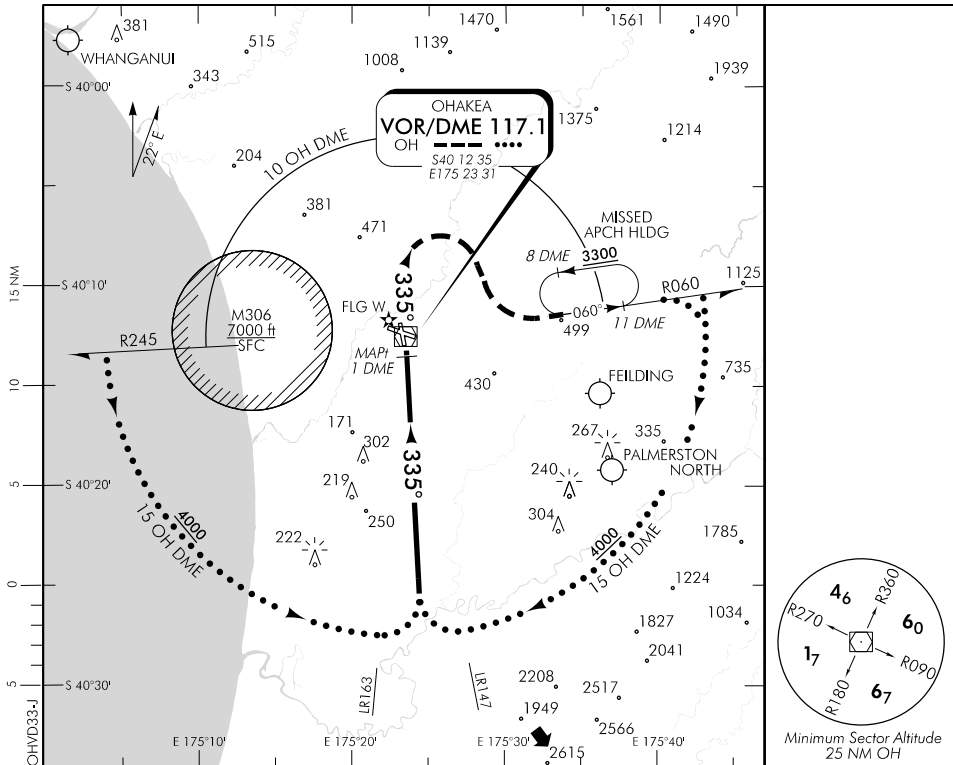
OHAKEA

RWY 33 THR ELEV 132

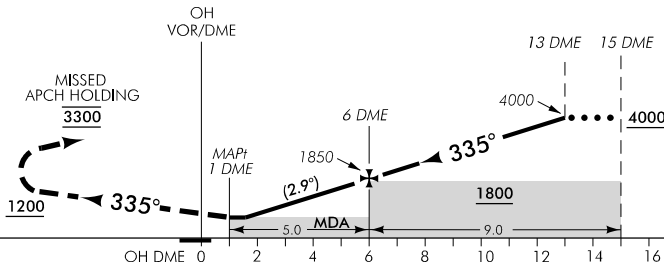
VOR/DME RWY 33

CONTROL: 125.1 128.5 123.2 263.4 TOWER: 134.5 255.4

ATIS: 135.0 280.4



Use Ohakea QNH



MISSED APCH: MAX IAS 185 kt. Track 335° to **1200**, turn RIGHT track R060, enter missed APCH HLDG **3300**

OH DME DIST	MAPt 1	1.7	2	3	4	5	6	7	8	9	10
Advisory Altitude 5%	MDA	MDA	650	950	1250	1550	1850	2150	2450	2750	3050
Category	A		B			C		D			
VOR/DME	550(418) – 1500					550(418) – 2000					
Circling	730(566) – 1900		800(636) – 2800			1060(896) – 4000		1100(936) – 4600			

Changes from 26 MAY 16: MINM SECT ALT 25 NM.

Effective: 30 MAR 17