

ELEV 164

CAT A,B,C,D

OHAKEA

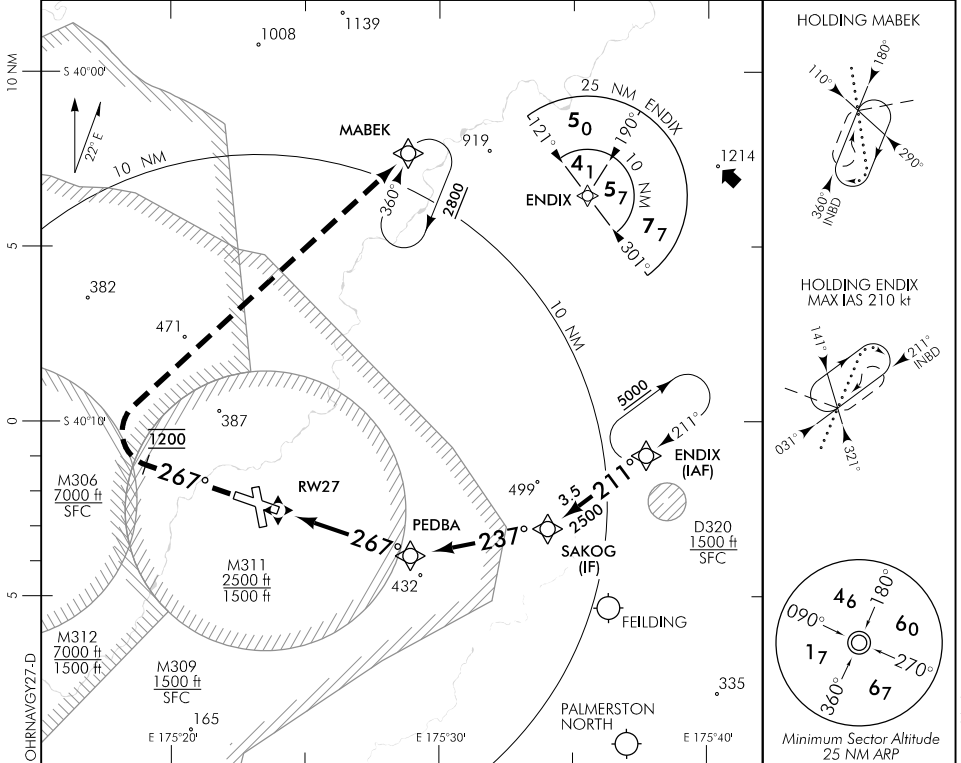
RWY 27 THR ELEV 149

RNAV (GNSS) Y RWY 27

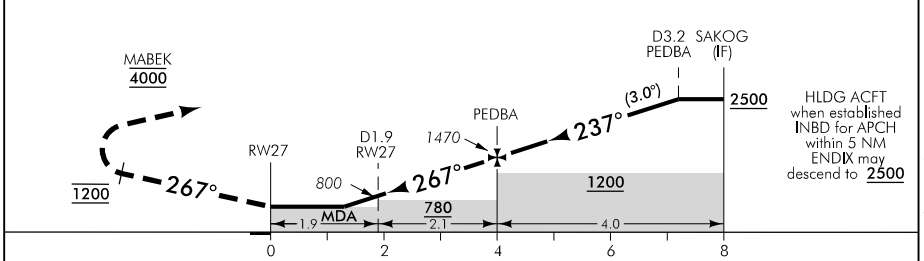
CONTROL: 125.1 128.5 123.2 263.4

TOWER: 134.5 255.4

ATIS: 135.0 280.4



Use Ohakea QNH



MISSED APCH: Track 267° to 1200, turn RIGHT direct to MABEK 4000

DISTANCE to WPT	RWY27	1.3	2	3	PEDBA	1	2	3	SAKOG
Advisory Altitude 3°	MDA	MDA	840	1150	1470	1790	2110	2430	2750
Category	A		B		C			D	
LNAV	610(461) - 1500				610(461) - 1900				
Circling	730(566) - 1900		800(636) - 2800		1020(856) - 4000			1100(936) - 4600	

Effective: 14 SEP 17

Changes from 30 MAR 17: ENDIX HLDG added.

ELEV 164

CAT A,B,C,D

OHAKEA

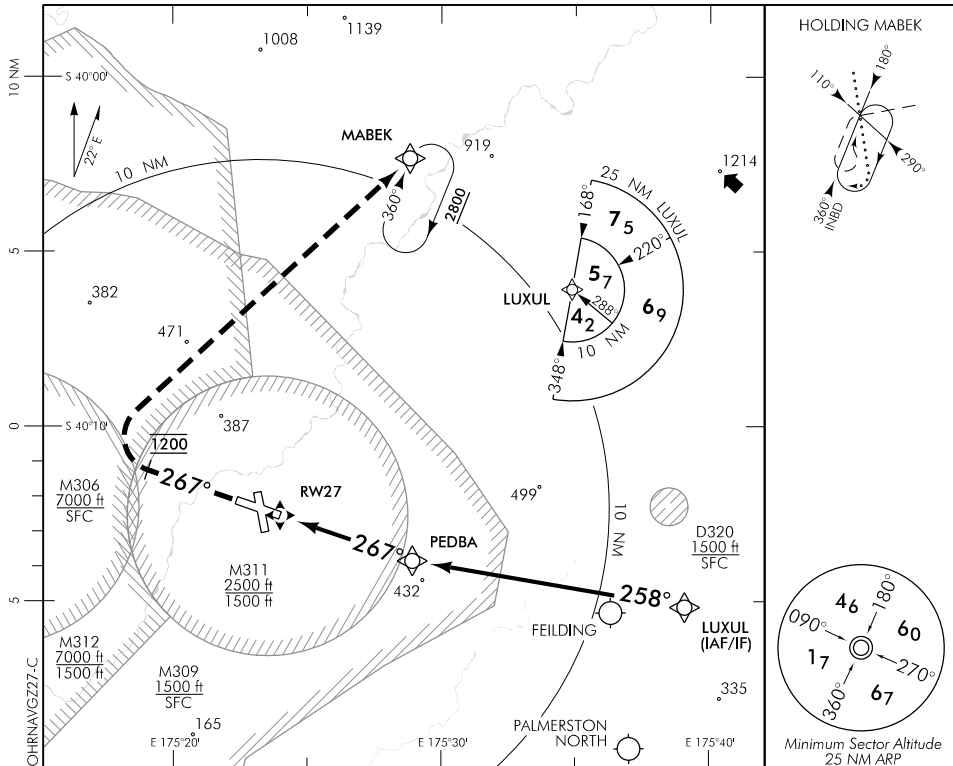
RWY 27 THR ELEV 149

RNAV (GNSS) Z RWY 27

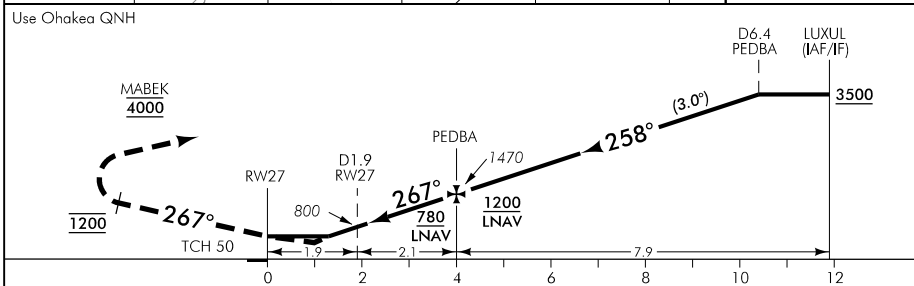
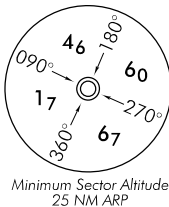
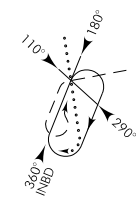
CONTROL: 125.1 128.5 123.2 263.4

TOWER: 134.5 255.4

ATIS: 135.0 280.4



HOLDING MABEK



MISSED APCH: Track 267° to 1200, turn RIGHT direct to MABEK 4000

DISTANCE TO WPT	RWY27	1	1.3	2	3	PEDBA	1	2	3	4	5	6	7	LUXUL
Advisory Altitude 3°	MDA	DA	MDA	840	1150	1470	1790	2110	2430	2750	3060	3380	3700	3990
Category	A			B			C			D				
LNAV/VNAV *	510(361) - 1500													
LNAV	610(461) - 1500						610(461) - 1900							
Circling	730(566) - 1900			800(636) - 2800			1020(856) - 4000			1100(936) - 4600				

* Valid to AD temperatures -5°C. Use of remote QNH NA

Changes from 10 NOV 16: MNI SECT ALT 25 NM.

Effective: 30 MAR 17