

ELEV 164

CAT A,B,C,D

OHAKEA

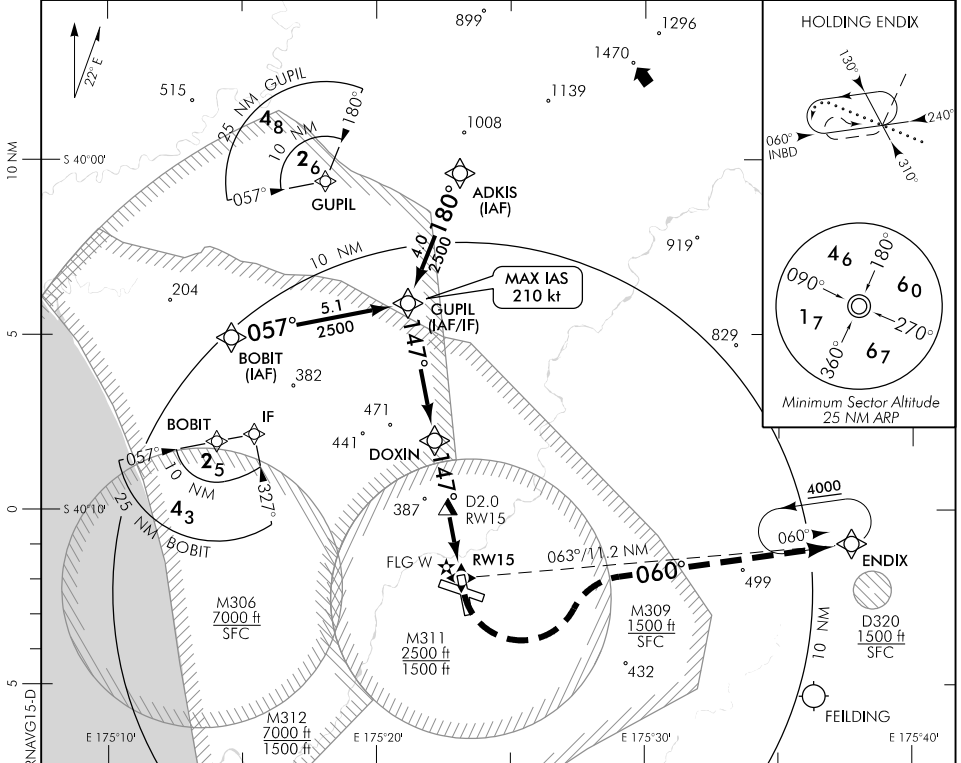
RWY 15 THR ELEV 164

RNAV (GNSS) RWY 15

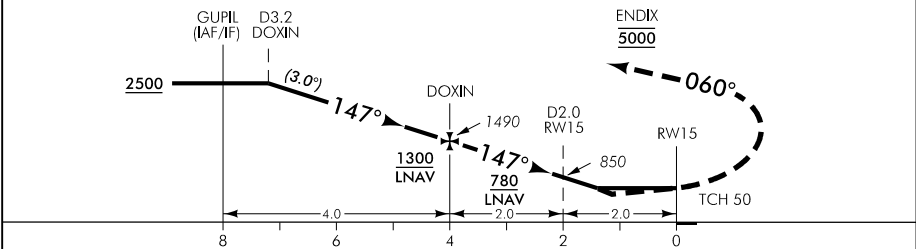
CONTROL: 125.1 128.5 123.2 263.4

TOWER: 134.5 255.4

ATIS: 135.0 280.4



Use Ohakea QNH



MISSED APCH: MAX IAS 210 kt until turn complete. Turn LEFT track 060° to ENDIX 5000

DISTANCE to WPT	GUPIL	3	2	1	DOXIN	3	2	1.4	1.2	RW15
Advisory Altitude 3°	2760	2440	2120	1810	1490	1170	850	MDA	DA	MDA
Category	A			B		C		D		
LNAV/VNAV *	610(446) - 1500					650(486) - 2400				
LNAV	650(486) - 1600					650(486) - 2400				
Circling	730(566) - 1900		800(636) - 2800			1020(856) - 4000		1100(936) - 4600		

* Valid to AD temperature -5°C. Use of remote QNH NA

Effective: 30 MAR 17

Changes from 10 NOV 16: MINM SECT ALT 25 NM.

ELEV 164

CAT A,B,C,D

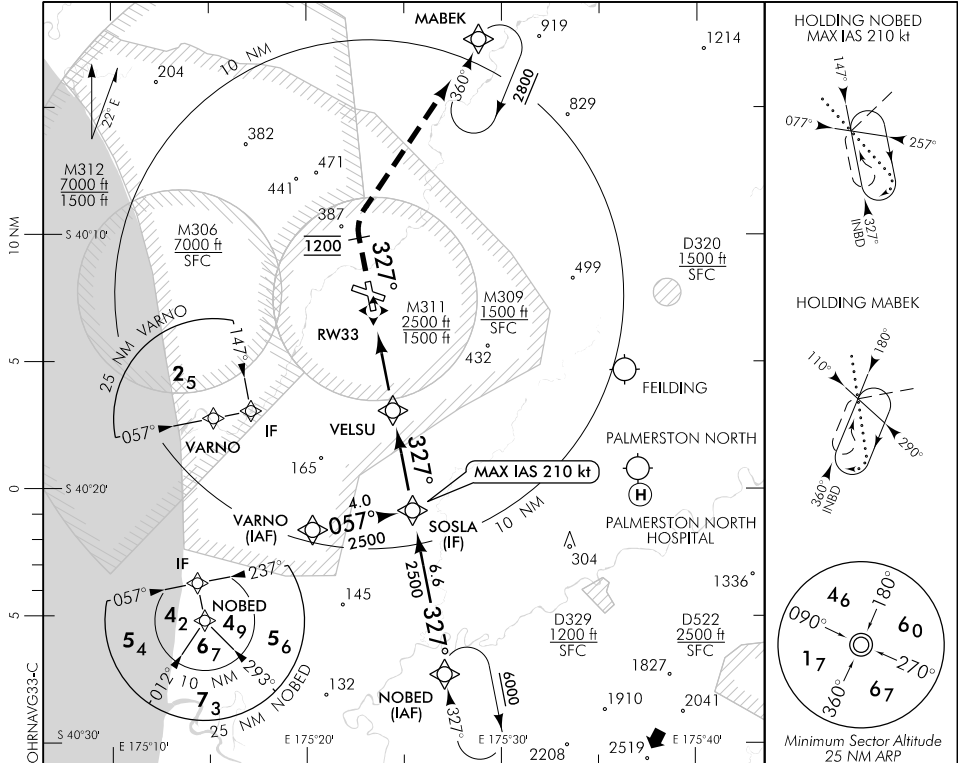
OHAKEA

RWY 33 THR ELEV 132

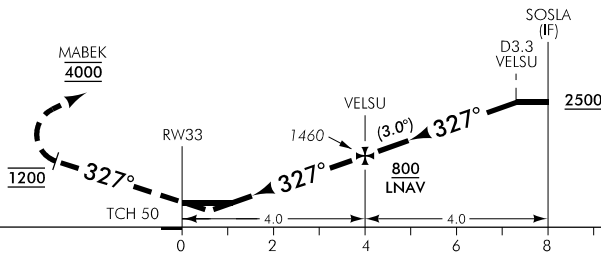
RNAV (GNSS) RWY 33

CONTROL: 125.1 128.5 123.2 263.4 TOWER: 134.5 255.4

ATIS: 135.0 280.4



Use Ohakea QNH



HLDG ACFT when established INBD for APCH and inside 7 NM NOBED may descend to **4100**

MISSED APCH: Track 327° to 1200, turn RIGHT direct to MABEK 4000

DISTANCE TO WPT	RW33	0.8	1	2	3	VELSU	1	2	3	SOSLA
Advisory Altitude 3°	MDA	DA	MDA	820	1140	1460	1770	2090	2410	2730
Category	A		B			C		D		
LNAV/VNAV *	430(298) - 1500					430(298) - 1600				
LNAV	510(378) - 1500					510(378) - 1600				
Circling	730(566) - 1900		800(636) - 2800			1020(856) - 4000		1100(936) - 4600		

* Valid to AD temperature -5°C. Use of remote QNH NA

Changes from 10 NOV 16: MNI SECT ALT 25 NM.

Effective: 30 MAR 17