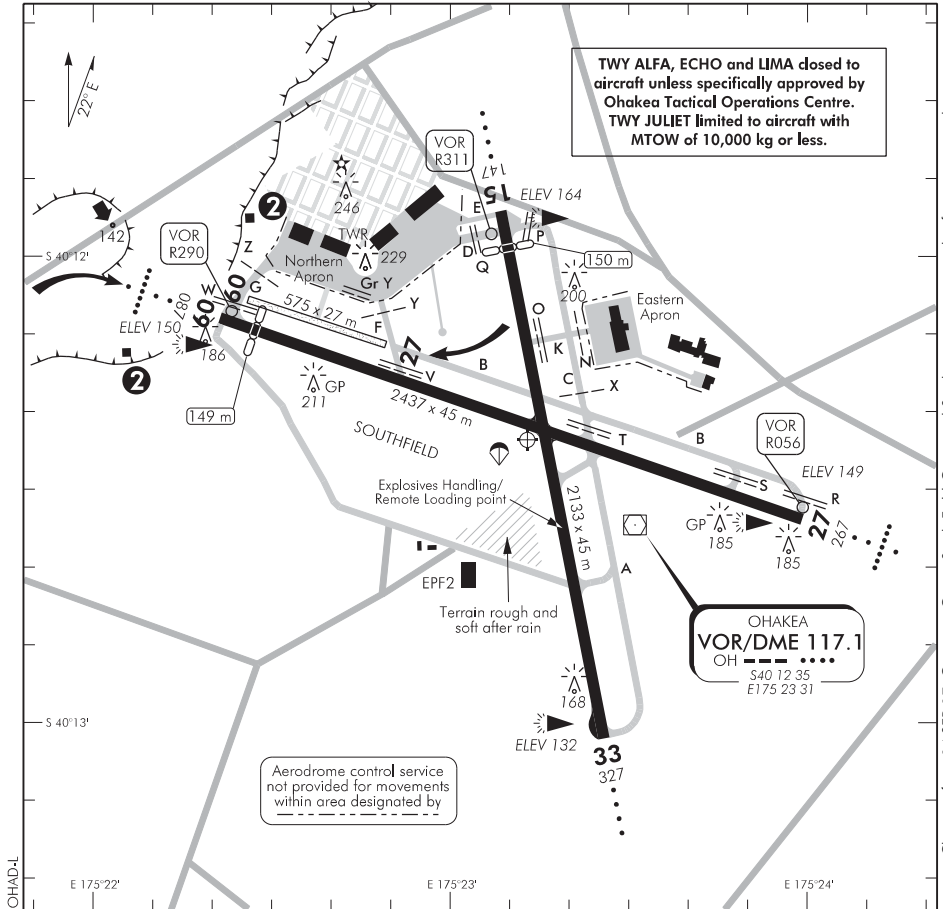


ELEV 164

NZOH

OHAKEA (MIL)
AERODROME (1)

TOWER: 134.5 255.4 GROUND: 122.1 258.5 UNATTENDED: 134.5 ATIS: 135.0 280.4



1. Circuit direction: RWY 15,27,33, Gr RWY 09 — Left hand
RWY 09, Gr RWY 27 — Right hand

Circuit altitude: 1200 ft AMSL for all aircraft types.

NOTE: Locally based helicopters and fixed-wing aircraft may fly circuits in accordance with local procedures, or a specific ATC clearance.

2. Flight inside 30 ft of the buildings near these sites and HF radio or radar transmissions within 120 m of these sites are prohibited.
- D 3. Take-off on RWY 09 is to commence from the displaced threshold. Take-off power is not to be applied prior to the displaced threshold in order to avoid blast damage to the LOC aerals.
4. **CAUTION:** Bird hazard. Plovers and gulls on runways in stormy weather. Flocks of starlings possible on grass Apr–Jun and Sept–Nov. Occasional pigeons and plovers fly through the circuit.
5. **CAUTION:** Aquaplaning in wet conditions due to standing water on RWY 15/33 and at the intersection of RWY 15/33 and RWY 09/27.
6. In addition to its taxiway function, TWY BRAVO may be utilised as an (un-surveyed) 1565 m runway for military aircraft only. Civilian use of TWY B as a runway is prohibited.

(continued)

Effective: 1 FEB 18

OHAKEA (MIL)
AERODROME (2)

7. **CAUTION:** Mechanical turbulence can be encountered in the vicinity of the North East Hangars on RWY 15 during SE winds (approx 110 M +/- 20 deg) > 15 kt.
8. Up to 5 aircraft may be permitted in any one circuit. ATC will advise when the circuit is full.
9. The northern and eastern apron areas are uncontrolled. Aircraft should maintain a listening watch on GROUND while on either apron and TOWER while in the manoeuvring area. Aircraft should establish contact with the respective controller on or prior to entering the apron or manoeuvring areas.
10. Outside Ohakea TWR hours, approval to enter M309 required from Ohakea Approach 125.1 MHz (Tel 03 358 1694). Outside Ohakea Approach hours clearance required from Ohakea Tactical Operations Centre 135.1 MHz (Tel +64 6 351 5443).
11. Four met masts (36 ft AGL — lit red at night) are located S of RWY 09 THR (186 ft), SE of RWY 15 THR (200 ft), S of RWY 27 THR (185 ft) and W of RWY 33 THR (168 ft).
12. **CAUTION:** Airfield restrictions will apply when an aircraft is parked on the Explosives Handling Point.
13. TWY C only available to aircraft up to and including Code D.