

ELEV 164

CAT A,B,C,D

OHAKEA

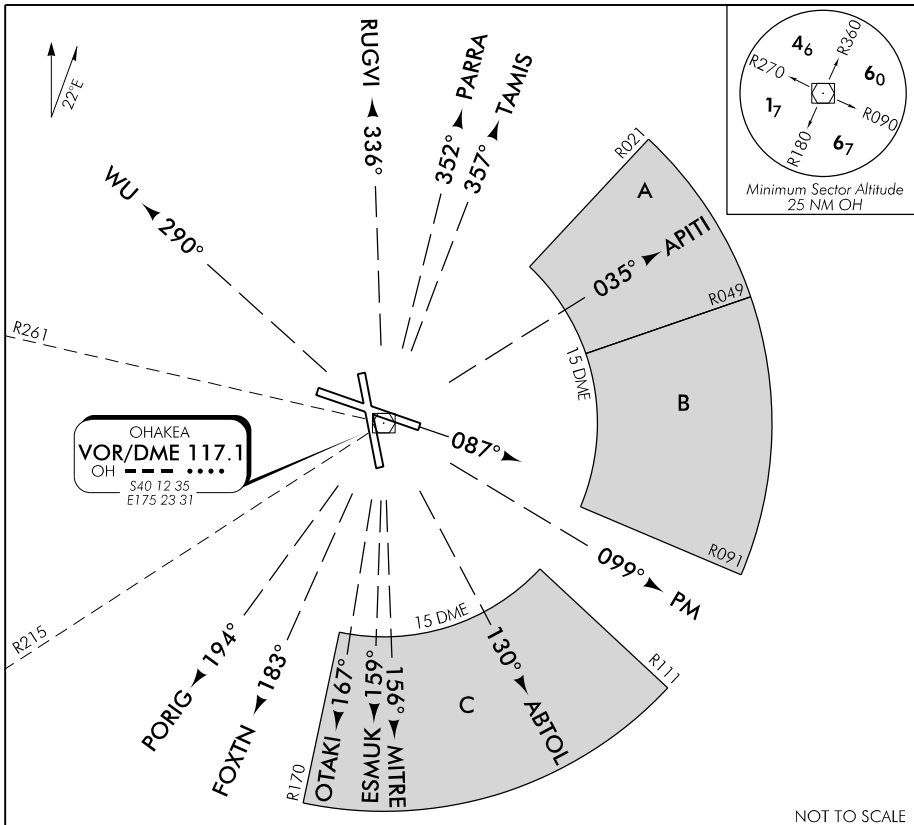
NZOH

DEPARTURES RWY 09

APPROACH: 125.1 128.5 123.2 263.4

TOWER: 134.5 255.4

ATIS: 135.0 280.4



ALL DEPARTURES

- Note 1. Minimum net climb gradient 3.3% (200 ft/NM) unless higher stated. All climb gradients stated apply from take-off.
2. Aircraft must be established on an evaluated track within 4 OH DME, advise ATC if unable.
3. ATC requirement: H24 – all IFR flights cleared at 11,000 ft or above:
- On tracks between R215 to R261 (inclusive) OH VOR – Maintain 10,000 ft to 60 OH
 - On all other tracks – Maintain 10,000 ft to 30 OH
 - Aircraft to GOPLU, TANEN, GULUT refer to Oceanic Transition on ARR/DEP page.

RWY 09

OHAKEA ONE ROMEO DEPARTURE – (OH1R)

MNM net climb gradient 3.6% (220 ft/NM) to 800 ft.

MNM net climb gradient in the following sectors:

- A. Sector between R021-R049 OH VOR beyond 15 OH DME, MNM net climb gradient 3.6% (220 ft/NM) to 7200 ft.
- B. Sector between R049-R091 OH VOR beyond 15 OH DME, MNM net climb gradient 4.2% (260 ft/NM) to 5400 ft.
- C. Sector between R111-R170 OH VOR beyond 15 OH DME, MNM net climb gradient 3.7% (230 ft/NM) to 7000 ft.

- At MNM 800 ft, turn to intercept cleared track or heading.

Effective: 24 MAY 18

Changes from 9 NOV 17: Routes reviewed, OH1R DEP added, COM header ATC call sign.

ELEV 164

CAT A,B,C,D

NZOH

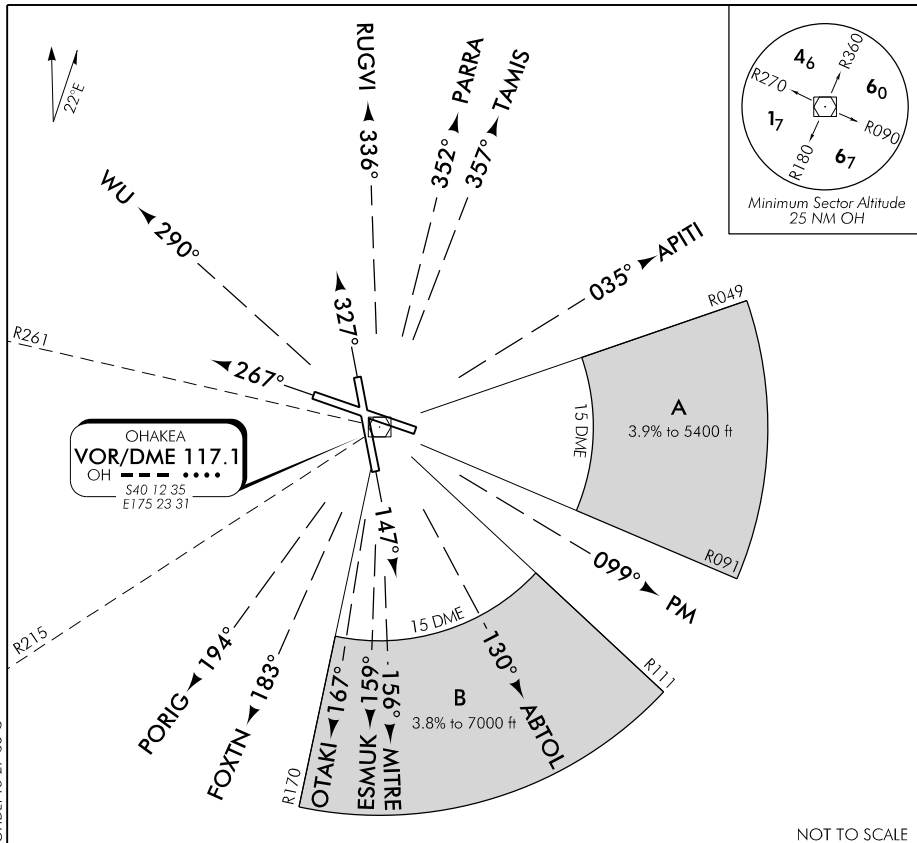
OHAKEA

DEPARTURES RWY 15,27,33

APPROACH: 125.1 128.5 123.2 263.4

TOWER: 134.5 255.4

ATIS: 135.0 280.4



ALL DEPARTURES

- Note 1. Minimum net climb gradient 3.3% (200 ft/NM) unless higher stated. All climb gradients stated apply from take-off.
2. Aircraft must be established on an evaluated track within 4 OH DME, advise ATC if unable.
3. ATC requirement: H24 – all IFR flights cleared at 11,000 ft or above:
- On tracks between R215 to R261 (inclusive) OH VOR – Maintain 10,000 ft to 60 OH
 - On all other tracks – Maintain 10,000 ft to 30 OH
 - Aircraft to GOPLU, TANEN, GULUT refer to Oceanic Transition on ARR/DEP page.

RWY 15, 27, 33

OHAKA ONE SIERRA DEPARTURE – (OH1S)

MNM net climb gradient in the following sectors:

- A. Sector between R049-R091 OH VOR beyond 15 OH DME, MNM net climb gradient 3.9% (240 ft/NM) to 5400 ft.
- B. Sector between R111-R170 OH VOR beyond 15 OH DME, MNM net climb gradient 3.8% (230 ft/NM) to 7000 ft.

- At MNM 800 ft, turn to intercept cleared track or heading.