

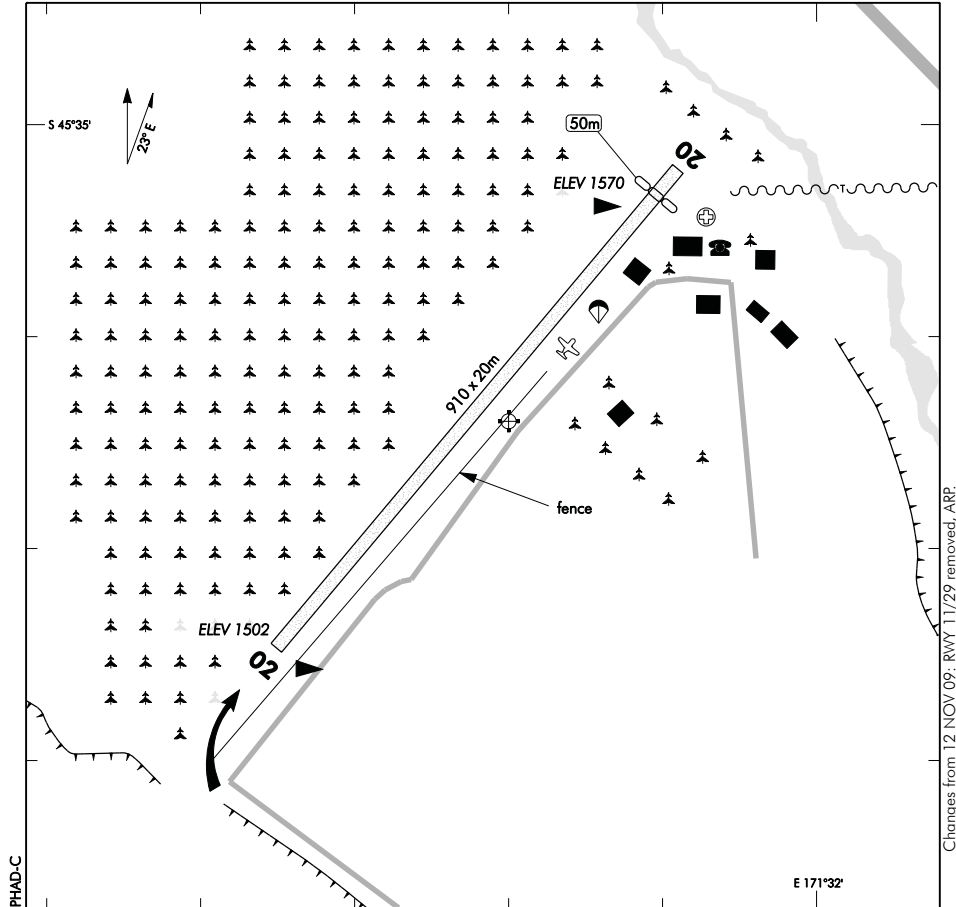
ELEV 1570

NZPH

NON-CERTIFICATED

**PUDDING HILL
AERODROME**

UNATTENDED: 119.1



1. Circuit: RWY 02 — Right hand
RWY 20 — Left hand
2. All taxiing confined to runway only.
3. **CAUTION:** Rising ground to the W and NW. Extreme turbulence and marked windshear may be encountered in strong W/NW wind conditions.
4. **CAUTION:** Commercial parachuting takes place overhead the aerodrome at altitudes up to 13,000ft seven days a week. Avoid standard overhead rejoins when parachuting is in progress. Skydiving activity is broadcast on 119.10 MHz.

S 43 35 14 E 171 31 40

Effective: 5 APR 12

© Civil Aviation Authority

**PUDDING HILL
AERODROME**

**PUDDING HILL
OPERATIONAL DATA**

NZPH

RWY

RWY	SFC	Strength	Gp	Slope	ASDA	Take-off distance			LDG DIST
						1:20	1:30	1:40	
02 02	Gr	ESWL 1800	4 7	2.2U	910	860			910
20 20	Gr	ESWL 1800	7 4	2.2D	910	910			860

D**LIGHTING**

Nil

FACILITIES

Nil

SUPPLEMENTARY

Operator: Skydivingnz.com Ltd
 PO Box 21, Methven
 Tel (03) 302 9143 Fax (03) 302 9140

Landowner's permission required. Tel 021 432 140 or (03) 302 9143

D