

ELEV 151

CAT A,B,C,D

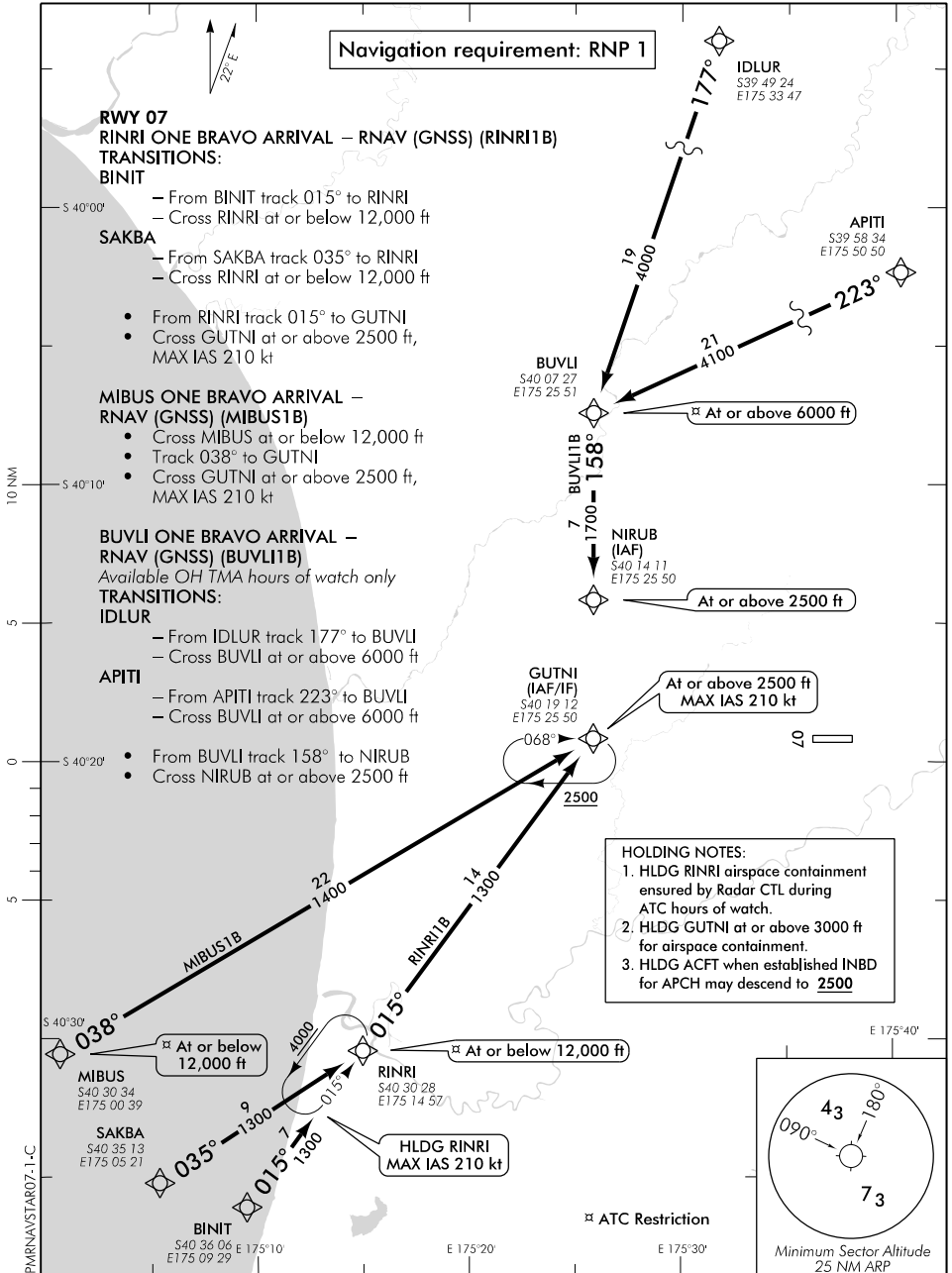
# PALMERSTON NORTH

## RNAV (GNSS) STAR RWY 07 (1)

NZPM

OHAKEA APPROACH: 125.1 128.5 123.2 263.4  
ATIS: 129.7

PALMERSTON TOWER: 120.6  
UNATTENDED: 120.6



Changes from 14 SEP 17: COM header-ATC callsign.

**Effective: 21 MAY 20**

ELEV 151

CAT A,B,C,D

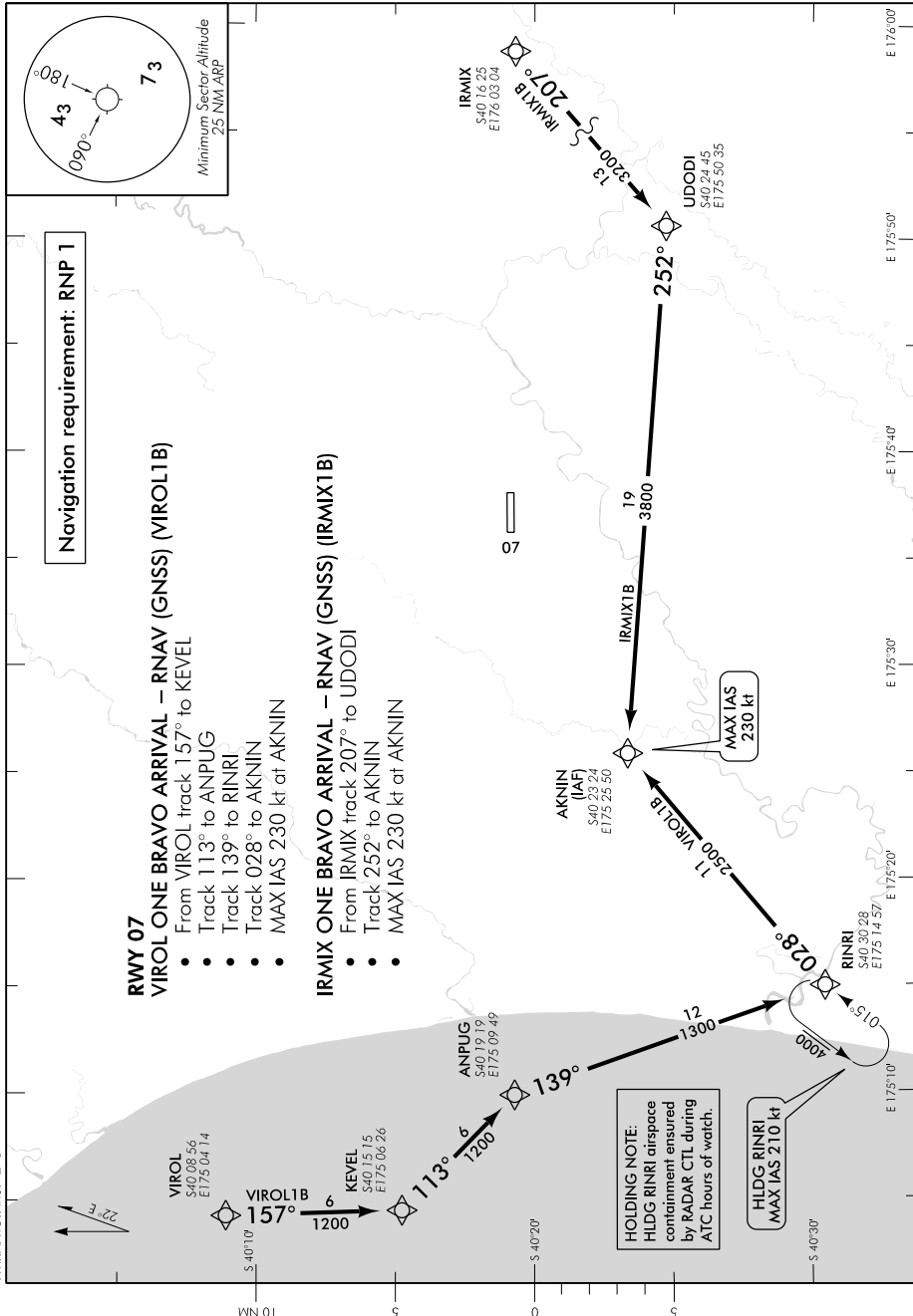
NZPM

# PALMERSTON NORTH

## RNAV (GNSS) STAR RWY 07 (2)

OHAKEA APPROACH: 125.1 128.5 123.2 263.4  
ATIS: 129.7

PALMERSTON TOWER: 120.6  
UNATTENDED: 120.6



Changes from 14 SEP 17: COM header/ATC collision.

Effective: 21 MAY 20