

ELEV 151

CAT A,B,C,D

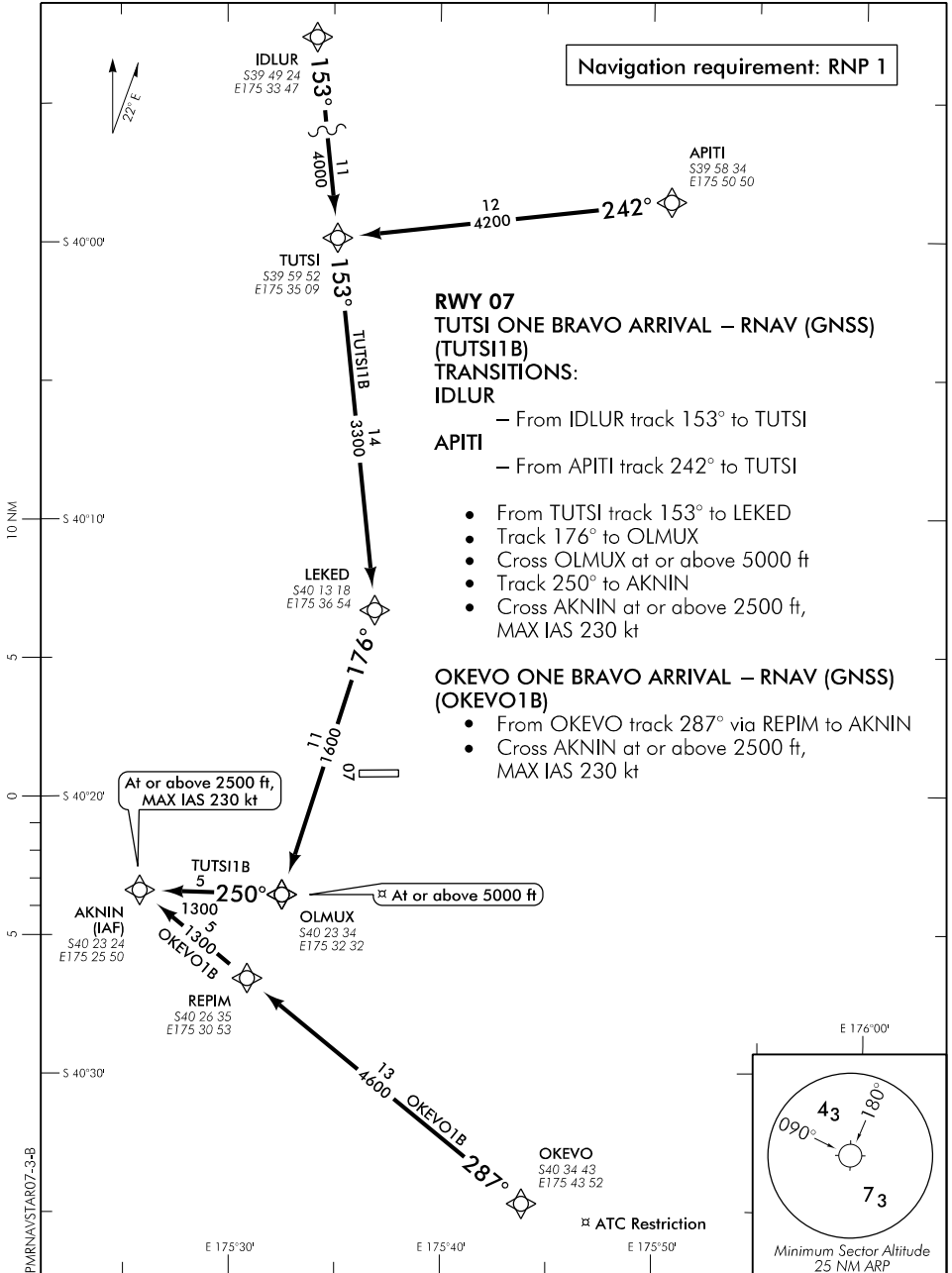
PALMERSTON NORTH

NZPM

RNAV (GNSS) STAR RWY 07 (3)

OHAKEA APPROACH: 125.1 128.5 123.2 263.4
ATIS: 129.7

PALMERSTON TOWER: 120.6
UNATTENDED: 120.6



Changes from 10 NOV 16: COM header ATC call sign.

Effective: 21 MAY 20

