

ELEV 151

CAT A,B,C,D

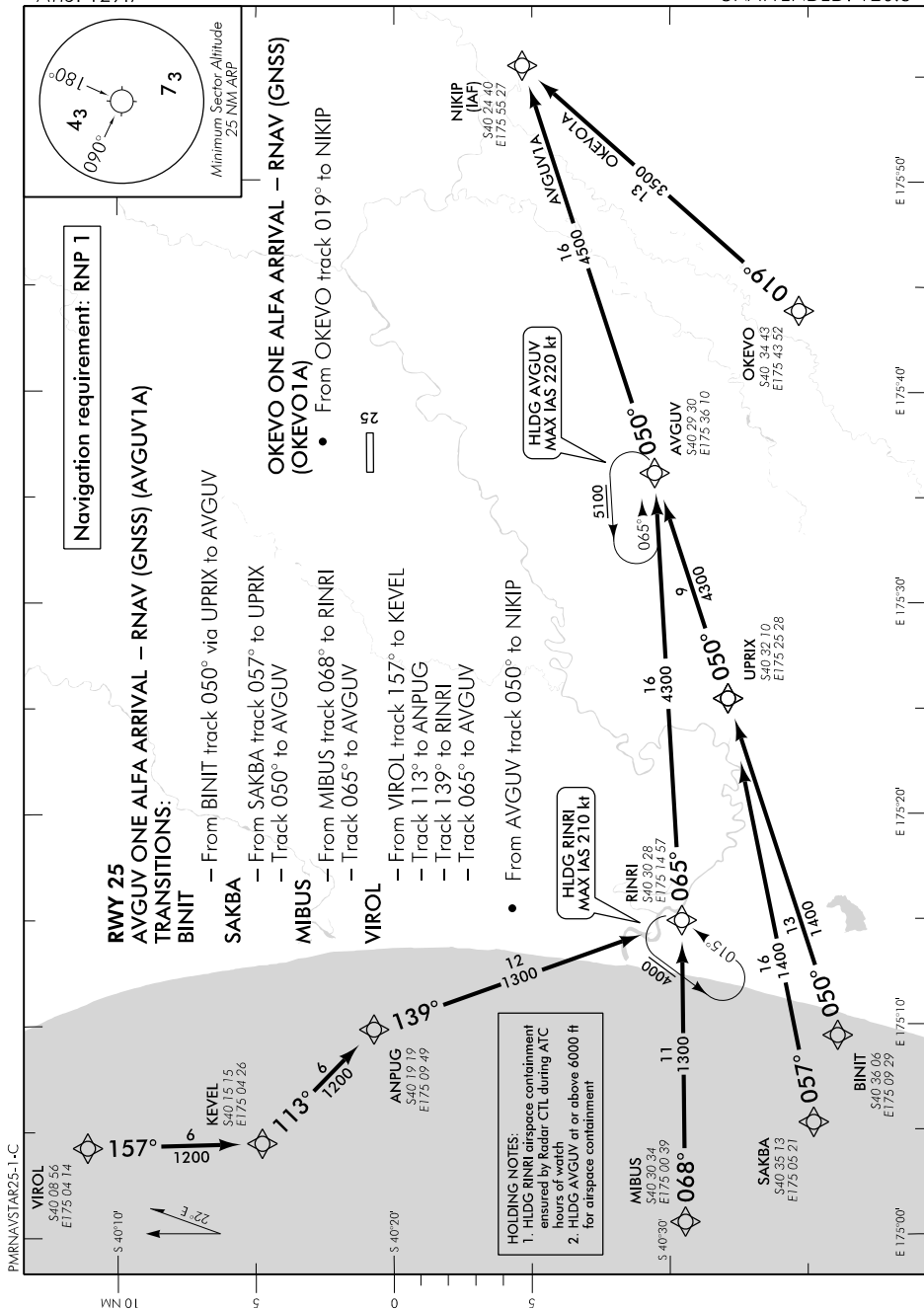
PALMERSTON NORTH

NZPM

RNAV (GNSS) STAR RWY 25 (1)

OHAKEA APPROACH: 125.1 128.5 123.2 263.4
ATIS: 129.7

PALMERSTON TOWER: 120.6
UNATTENDED: 120.6



Changes from 2 FEB 17: COM header/ATC call sign.

Effective: 21 MAY 20

PALMERSTON NORTH RNAV (GNSS) STAR RWY 25 (1)

ELEV 151

CAT A,B,C,D

PALMERSTON NORTH

NZPM

RNAV (GNSS) STAR RWY 25 (2)

OHAKEA APPROACH: 125.1 128.5 123.2 263.4
ATIS: 129.7

PALMERSTON TOWER: 120.6
UNATTENDED: 120.6

Navigation requirement: RNP 1

RWY 25 IDLUR TWO ALFA ARRIVAL – RNAV (GNSS) (IDLUR2A)

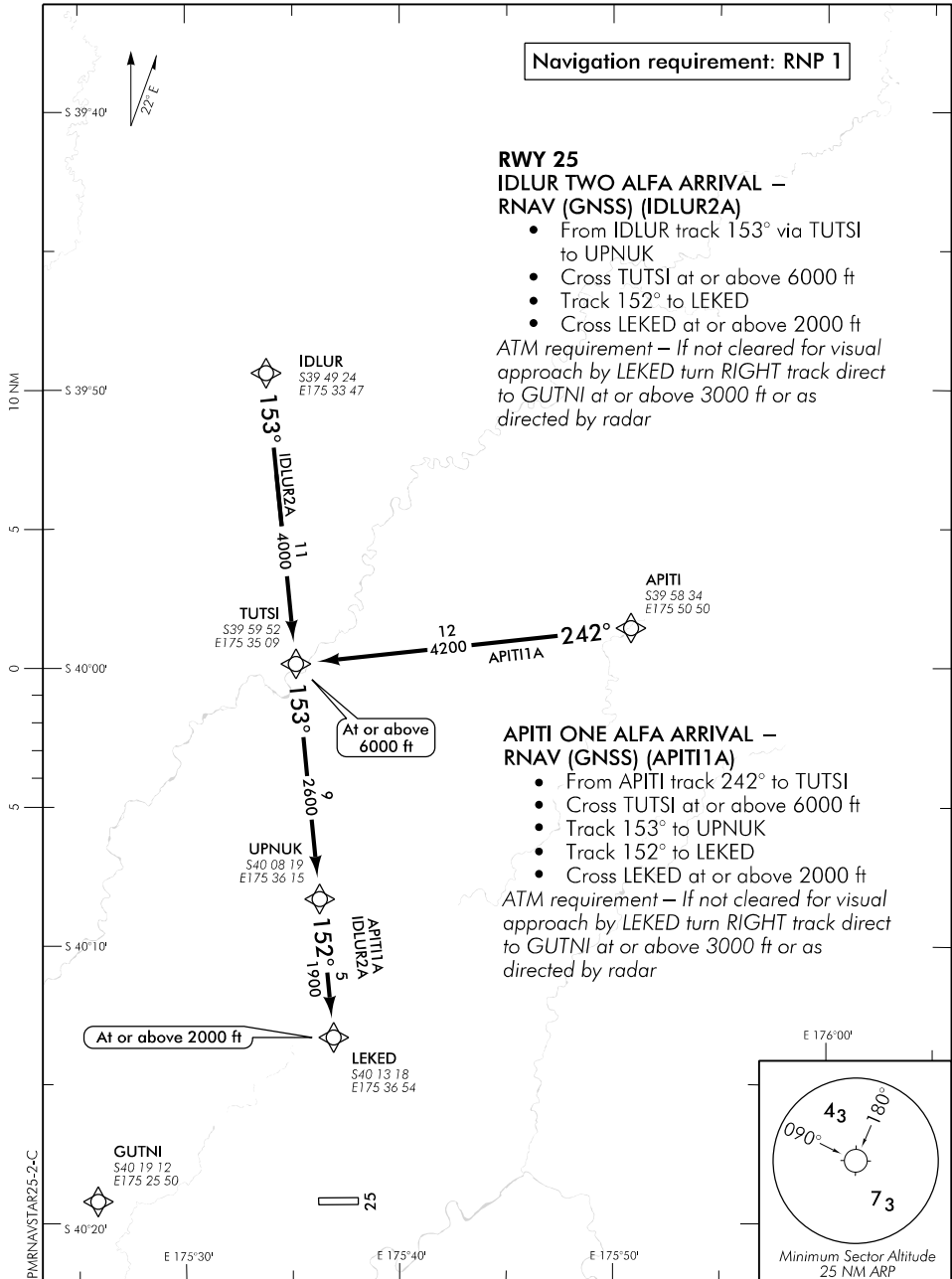
- From IDLUR track 153° via TUTSI to UPNUK
- Cross TUTSI at or above 6000 ft
- Track 152° to LEKED
- Cross LEKED at or above 2000 ft

ATM requirement – If not cleared for visual approach by LEKED turn RIGHT track direct to GUTNI at or above 3000 ft or as directed by radar

APITI ONE ALFA ARRIVAL – RNAV (GNSS) (APITI1A)

- From APITI track 242° to TUTSI
- Cross TUTSI at or above 6000 ft
- Track 153° to UPNUK
- Track 152° to LEKED
- Cross LEKED at or above 2000 ft

ATM requirement – If not cleared for visual approach by LEKED turn RIGHT track direct to GUTNI at or above 3000 ft or as directed by radar



Changes from 14 SEP 17: IDLUR1C and APITI1C arrivals removed, ATIS unit collision.

Effective: 30 JAN 20

PALMERSTON NORTH RNAV (GNSS) STAR RWY 25 (2)