

ELEV 151

CAT A,B,C,D

PALMERSTON NORTH

NZPM

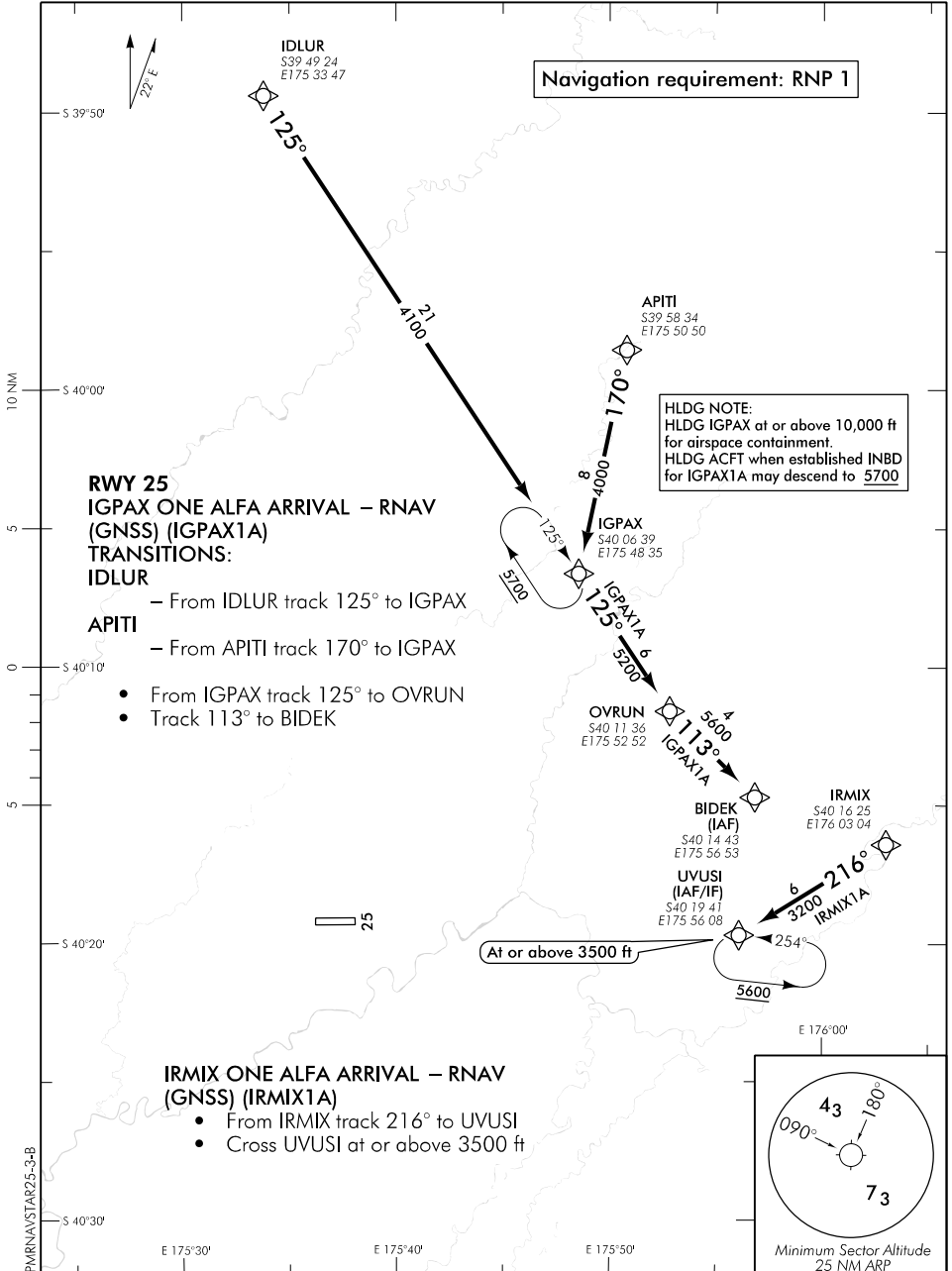
RNAV (GNSS) STAR RWY 25 (3)

OHAKEA CONTROL: 125.1 128.5 123.2 263.4

PALMERSTON TOWER: 120.6

ATIS: 129.7

UNATTENDED: 120.6



Changes from 10 NOV 16: STARs split from previous page.

Effective: 14 SEP 17

ELEV 151

CAT A,B,C,D

NZPM

PALMERSTON NORTH

RNAV (GNSS) STAR RWY 25 (4)

OHAKEA CONTROL: 125.1 128.5 123.2 263.4
ATIS: 129.7

PALMERSTON TOWER: 120.6
UNATTENDED: 120.6

Navigation requirement: RNP 1

RWY 25 LUNBA ONE ALFA ARRIVAL – RNAV (GNSS) (LUNBA1A) TRANSITIONS: VIROL

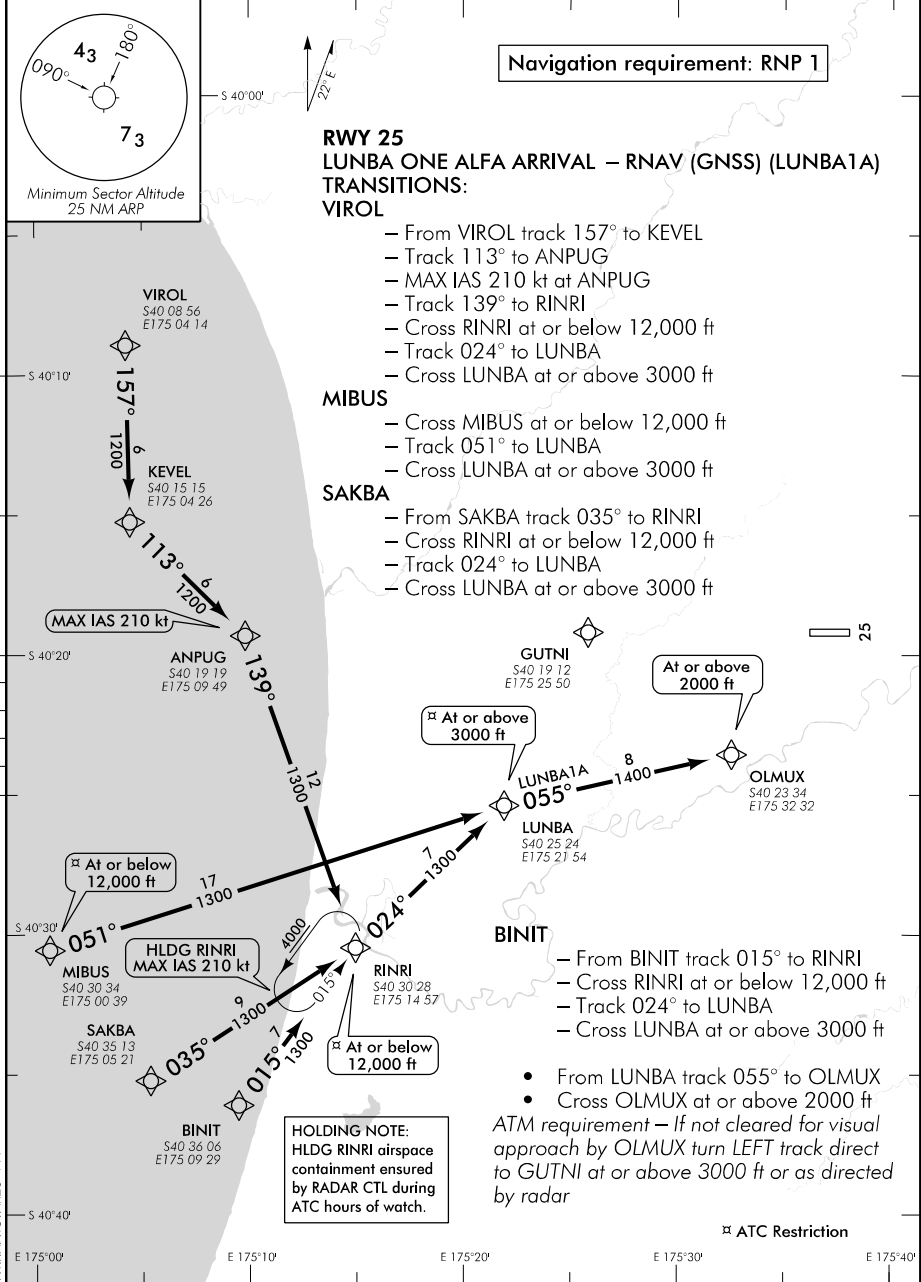
- From VIROL track 157° to KEVEL
- Track 113° to ANPUG
- MAX IAS 210 kt at ANPUG
- Track 139° to RINRI
- Cross RINRI at or below 12,000 ft
- Track 024° to LUNBA
- Cross LUNBA at or above 3000 ft

MIBUS

- Cross MIBUS at or below 12,000 ft
- Track 051° to LUNBA
- Cross LUNBA at or above 3000 ft

SAKBA

- From SAKBA track 035° to RINRI
- Cross RINRI at or below 12,000 ft
- Track 024° to LUNBA
- Cross LUNBA at or above 3000 ft



Changes from 10 NOV 16: Pagnation, holding note added.