

ELEV 151

CAT B

PALMERSTON NORTH

NZPM

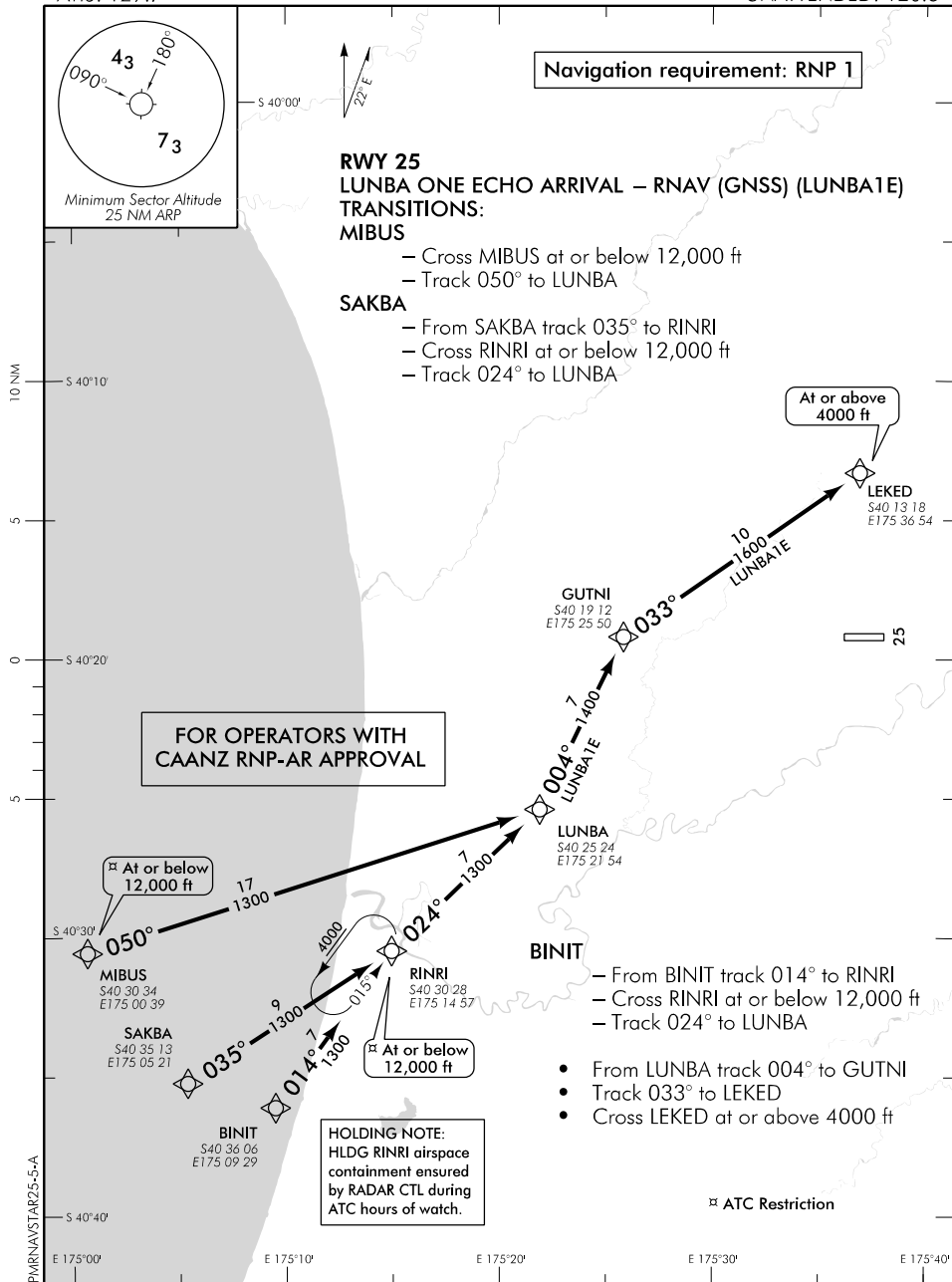
RNAV (GNSS) STAR RWY 25 (5)

OHAKEA APPROACH: 125.1 128.5 123.2 263.4

PALMERSTON TOWER: 120.6

ATIS: 129.7

UNATTENDED: 120.6



Navigation requirement: RNP 1

RWY 25
LUNBA ONE ECHO ARRIVAL – RNAV (GNSS) (LUNBATE)
TRANSITIONS:
MIBUS

- Cross MIBUS at or below 12,000 ft
- Track 050° to LUNBA

SAKBA

- From SAKBA track 035° to RINRI
- Cross RINRI at or below 12,000 ft
- Track 024° to LUNBA

FOR OPERATORS WITH CAANZ RNP-AR APPROVAL

At or below 12,000 ft

At or above 4000 ft

At or below 12,000 ft

HOLDING NOTE:
 HLDG RINRI airspace containment ensured by RADAR CTL during ATC hours of watch.

- From BINIT track 014° to RINRI
- Cross RINRI at or below 12,000 ft
- Track 024° to LUNBA
- From LUNBA track 004° to GUTNI
- Track 033° to LEKED
- Cross LEKED at or above 4000 ft

ATC Restriction

Effective: 12 SEP 19

ELEV 151

CAT B

PALMERSTON NORTH

NZPM

RNAV (GNSS) STAR RWY 25 (6)

OHAKEA APPROACH: 125.1 128.5 123.2 263.4

PALMERSTON TOWER: 120.6

ATIS: 129.7

UNATTENDED: 120.6

Navigation requirement: RNP 1

RWY 25 TUTSI ONE ECHO ARRIVAL – RNAV (GNSS) (TUTSI1E) TRANSITIONS:

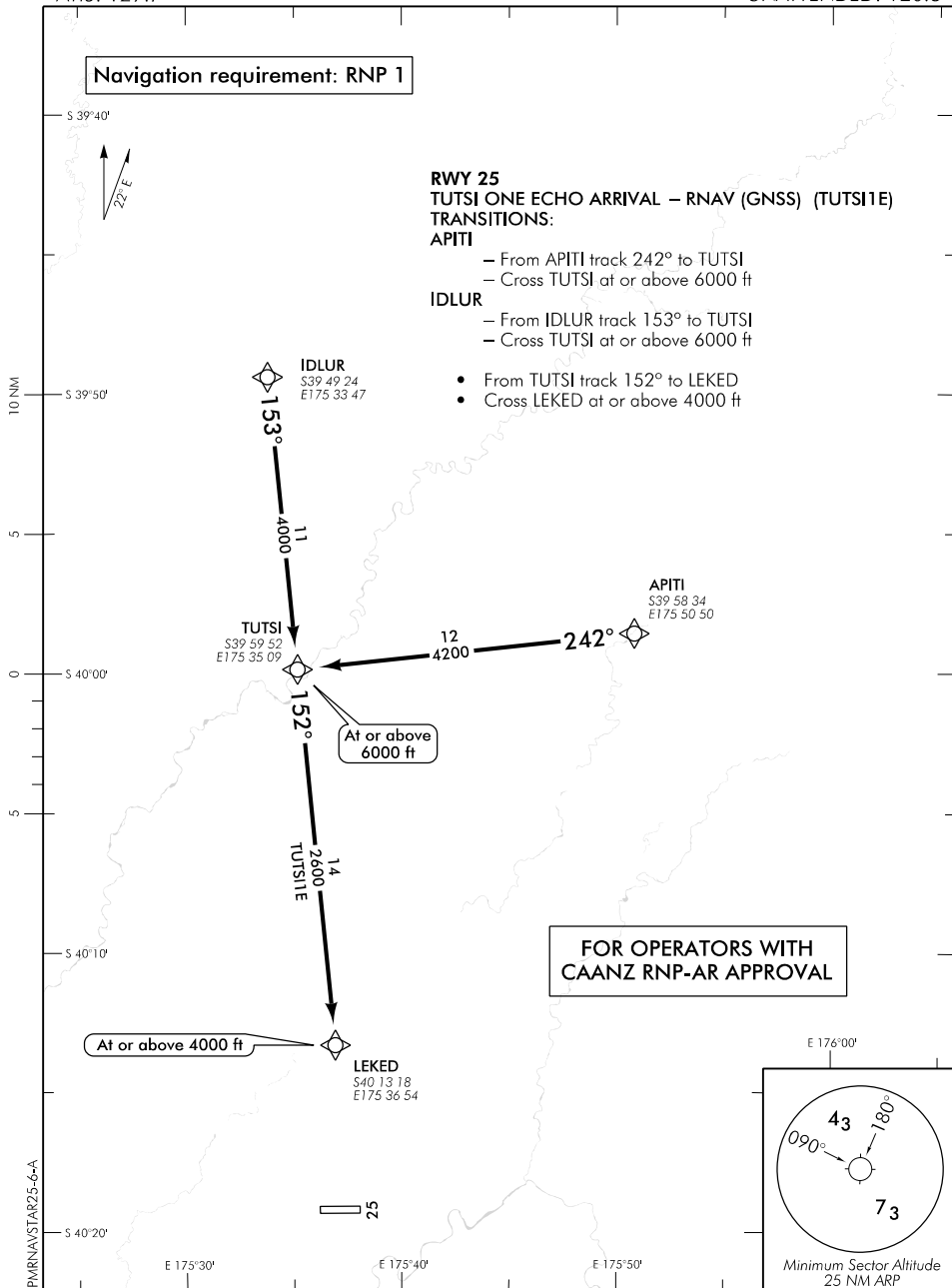
APITI

- From APITI track 242° to TUTSI
- Cross TUTSI at or above 6000 ft

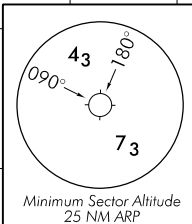
IDLUR

- From IDLUR track 153° to TUTSI
- Cross TUTSI at or above 6000 ft

- From TUTSI track 152° to LEKED
- Cross LEKED at or above 4000 ft



FOR OPERATORS WITH
CAANZ RNP-AR APPROVAL



Effective: 12 SEP 19