

ELEV 151

CAT A,B,C,D

# PALMERSTON NORTH

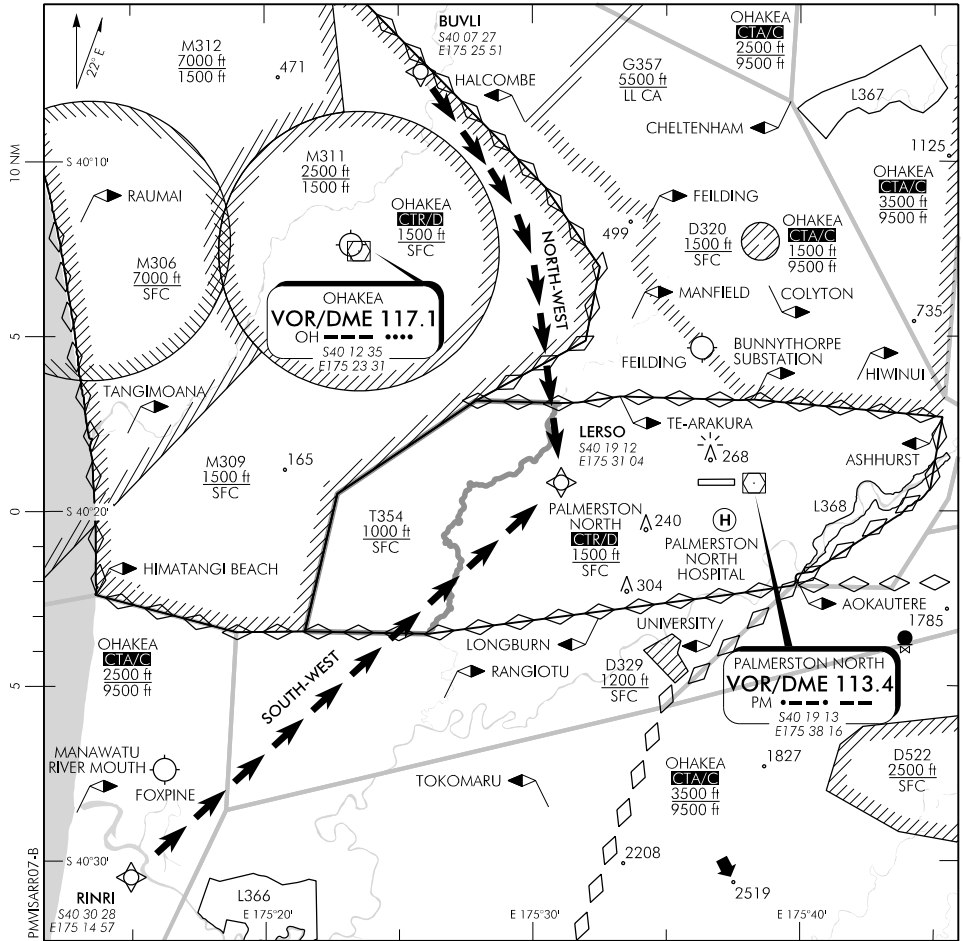
NZPM

## VISUAL ARRIVALS RWY 07

OHAKEA CONTROL: 125.1 128.5 123.2 263.4  
 ATIS: 129.7

PALMERSTON TOWER: 120.6

UNATTENDED: 120.6



### NORTH-WEST VISUAL ARRIVAL RWY 07

- Note: Remain clear of M311
- From BUVLI track via LERSO (4 NM final PM)
- Maintain 3000 ft until south of Feilding township
- Maintain 2000 ft until cleared by ATC

### SOUTH WEST VISUAL ARRIVAL RWY 07

- From RINRI track via LERSO (4 NM final PM)
- Maintain 2000 ft until cleared by ATC

**Effective: 2 FEB 17**

Changes from 10 NOV 16: PM VOR/DME FREQ corrected.

ELEV 151

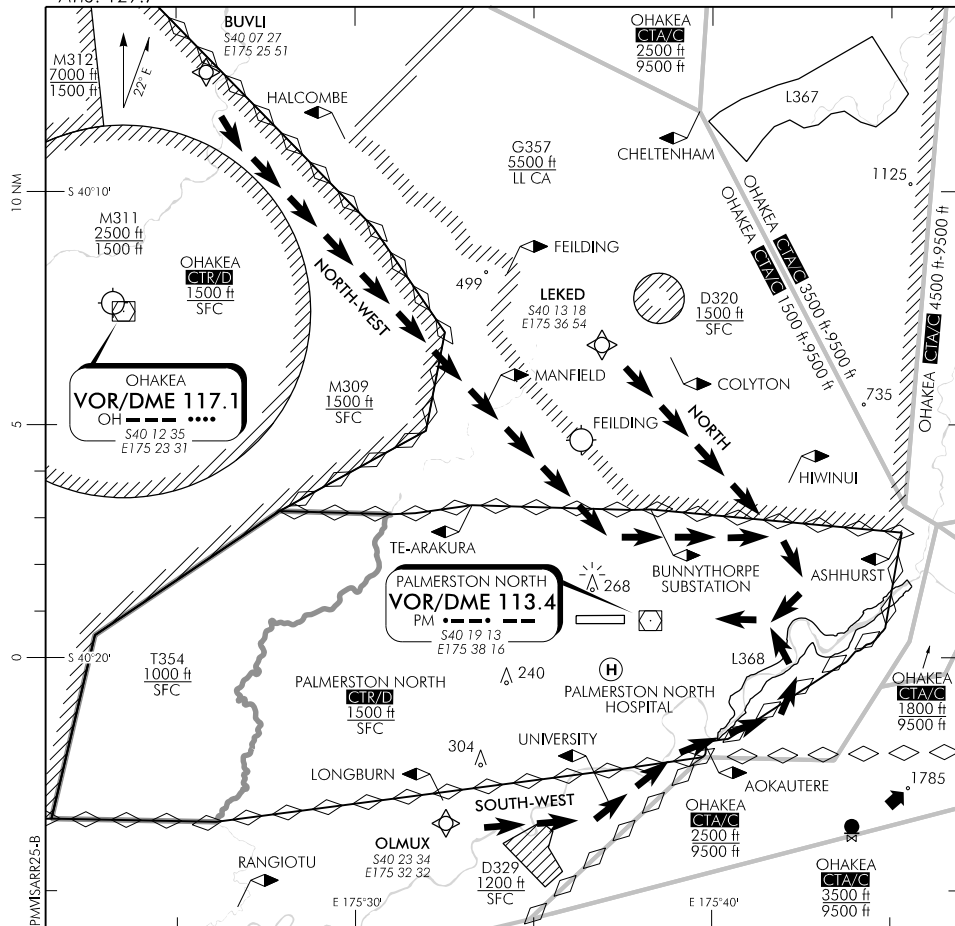
CAT A,B,C,D

# PALMERSTON NORTH

NZPM

## VISUAL ARRIVALS RWY 25

OHAKEA CONTROL: 125.1 128.5 123.2 263.4 PALMERSTON TOWER: 120.6 UNATTENDED: 120.6  
 ATIS: 129.7



Changes from 10 NOV 16: PM VOR/DME FREQ corrected.

### NORTH-WEST VISUAL ARRIVAL RWY 25

- Note: Remain clear of M311
- CAUTION: Expect high levels of non-transponder aircraft, including microlights, in uncontrolled airspace in the vicinity of FEILDING aerodrome
- From BUVLI, track towards PALMERSTON NORTH aerodrome, remaining clear of G357
- When south of Feilding township join downwind right hand south of BUNNYTHORPE SUBSTATION thence 3 NM final
- Maintain 3000 ft until south of Feilding township
- Maintain 2000 ft until cleared by ATC

### NORTH VISUAL ARRIVAL RWY 25

- Note: Not available when G357 active
- CAUTION: Expect high levels of non-transponder aircraft, including microlights, in uncontrolled airspace in the vicinity of FEILDING aerodrome
- From LEKED track via 3 NM final
- Maintain 2000 ft until cleared by ATC

### SOUTH-WEST VISUAL ARRIVAL RWY 25

- From OLMUX track south of UNIVERSITY then north of AOKAUTERE to position left base for 3 NM final
- Maintain 2000 ft until cleared by ATC

**Effective: 2 FEB 17**

# PALMERSTON NORTH