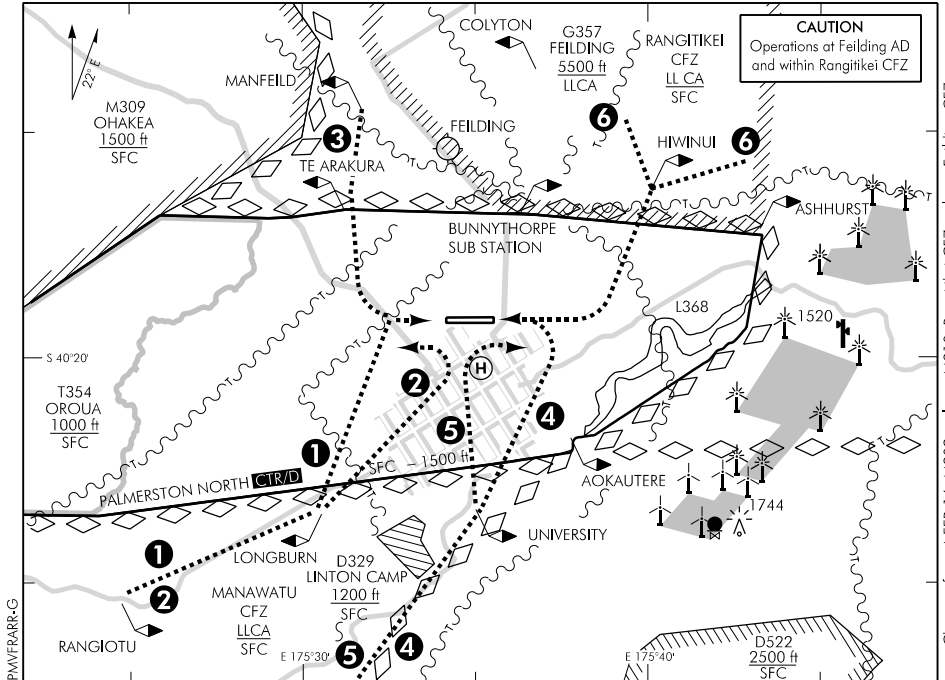


ELEV 151

NZPM

TOWER: 120.6 APPROACH: 125.1 GROUND: 121.7 UNATTENDED: 120.6 ATIS: 129.7

**PALMERSTON NORTH****VFR ARRIVAL PROCEDURES****REFER ALSO VISUAL NAVIGATION CHARTS****ARRIVAL PROCEDURES RWY 07:**

- | Designator     | Route  |
|----------------|--|
| ① Longburn ARR | Track via RANGIOTU to LONGBURN then direct to RIGHT base RWY 07 at 1500 ft VFR. Report on right base.  |
| ② CITY 07 ARR  | Track via RANGIOTU to LONGBURN then to Central City Square at 1500 ft VFR, then join downwind RIGHT hand for RWY 07. Report joining downwind for sequencing. |
| ③ Manfeild ARR | Track via MANFEILD then directly to LEFT base RWY 07 at 1500 ft VFR. Report on left base.  |

**ARRIVAL PROCEDURES RWY 25:**

- |                  |   |
|------------------|---|
| ④ University ARR | Track via TOKOMARU to UNIVERSITY then direct to LEFT base RWY 25 at 1500 ft VFR. Report on left base.   |
| ⑤ City 25 ARR    | Track via TOKOMARU to UNIVERSITY then to Central City Square at 1500 ft VFR, then join downwind LEFT hand for RWY 25. Report joining downwind for sequencing. |
| ⑥ Hiwinui ARR    | Track via COLYTON or ASHHURST to HIWINUI then directly to RIGHT base RWY 25 at 1500 ft VFR. Report on right base.   |

ATC will advise arriving aircraft when descent is available.

Subject to MET conditions, amended altitude instructions may be issued. More direct plain language clearances may be issued on request, or in periods of low traffic density.

Effective: 10 NOV 16

