

ELEV 151

CAT A,B,C,D

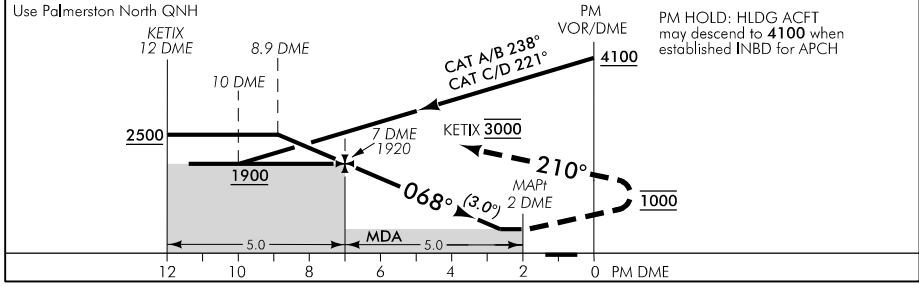
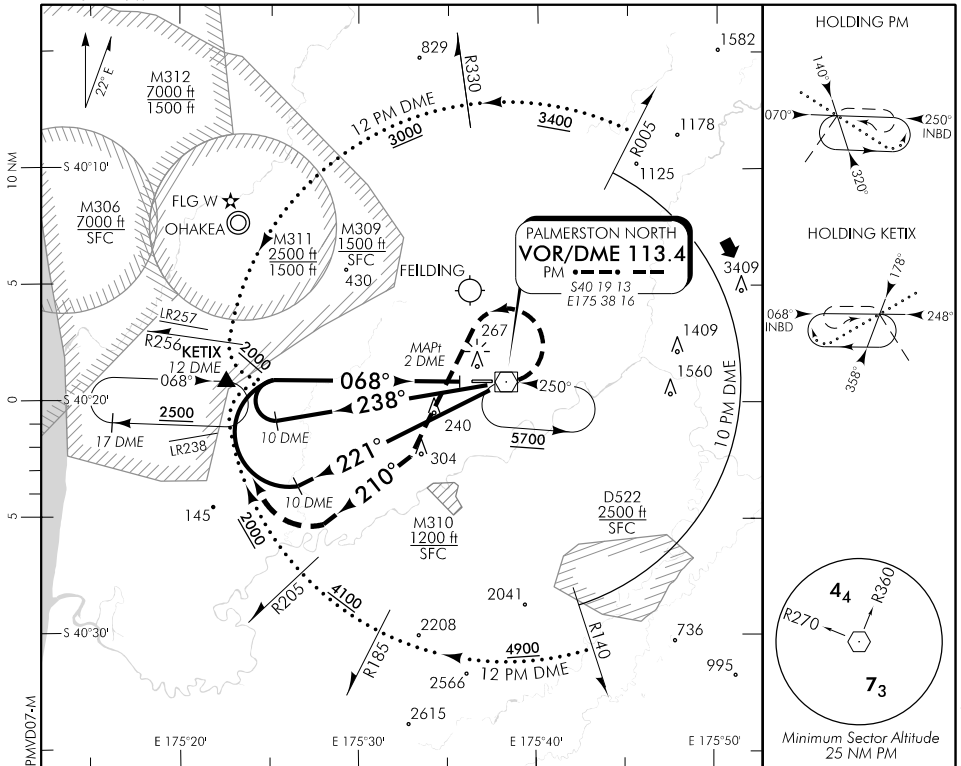
PALMERSTON NORTH

RWY 07 THR ELEV 121

VOR/DME RWY 07

OHAKEA APPROACH: 125.1 128.5 123.2 263.4 PALMERSTON TOWER: 120.6 UNATTENDED: 120.6

ATIS: 129.7



MISSED APCH: MAX IAS 185 kt until established on R210. Track 068° to 1000, turn LEFT intercept R210 to 12 DME ARC, turn RIGHT to KETIX hold 3000

PM DME DIST	KETIX	11	10	9	8	7	6	5	4	3	2.8	MAPt 2
Advisory Altitude 5.2%	3510	3190	2870	2550	2240	1920	1600	1280	960	640	MDA	MDA
Category	A			B			C			D		
VOR/DME	570(449) – 1600						570(449) – 2400					
Circling	690(539) – 1900			760(609) – 2800			1060(909) – 3700			* 1120(969) – 4600		

CAT C/D circling airspace containment not assured.
 * CAT D circling NA south of RWY

Effective: 10 SEP 20

PALMERSTON NORTH VOR/DME RWY 07

Changes from 21 MAY 20: Procedure reviewed.

ELEV 151

CAT A,B,C,D

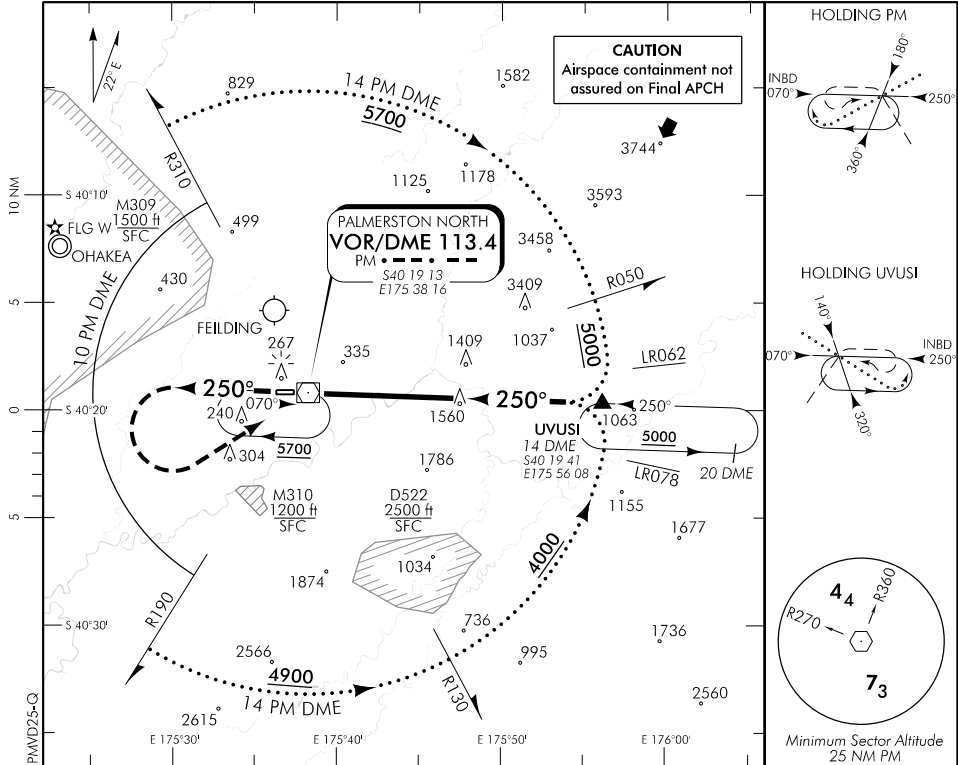
PALMERSTON NORTH

RWY 25 THR ELEV 151

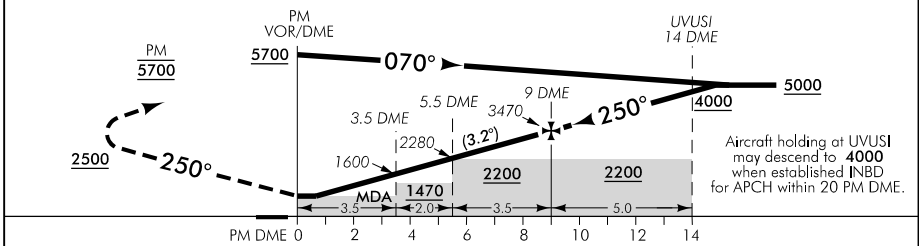
VOR/DME RWY 25

OHAKEA APPROACH: 125.1 128.5 123.2 263.4
 ATIS : 129.7

PALMERSTON TOWER : 120.6
 UNATTENDED : 120.6



Use Palmerston North QNH



MISSED APCH: Track 250° to 2500, turn LEFT direct to PM VOR hold 5700

PM DME DIST	MAPt	1	2	3	4	5	6	7	8	9	10
Advisory Altitude 5.6%	MDA	MDA	1090	1430	1770	2110	2450	2790	3130	3470	3810
Category		A		B			C		D		
VOR/DME		710(559) - 2000					710(559) - 2800				
Circling		710(559) - 2000			760(609) - 2800		1060(909) - 3700		*1120(969) - 4600		

CAT C/D circling airspace containment not assured.
 * CAT D circling NA south of RWY

Changes from 21 MAY 20: Procedure reviewed.

Effective: 10 SEP 20

PALMERSTON NORTH

VOR/DME RWY 25