

ELEV 151

CAT A,B,C,D

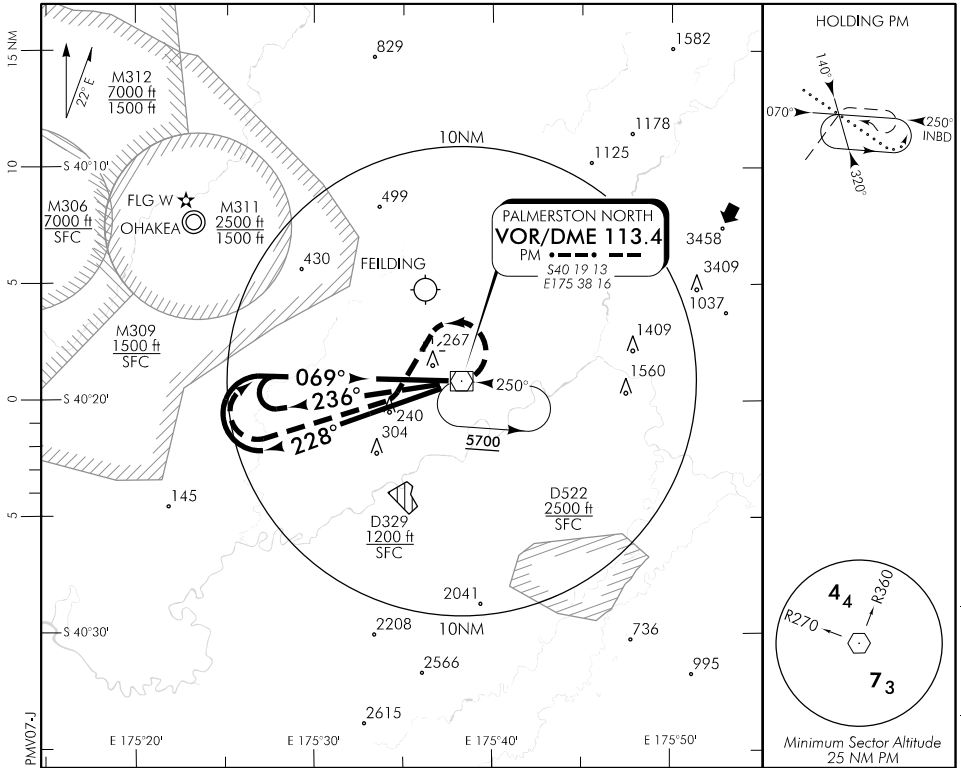
PALMERSTON NORTH

RWY 07 THR ELEV 121

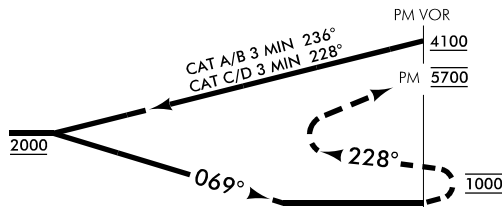
VOR RWY 07

OHAKEA CONTROL: 125.1 128.5 123.2 263.4 PALMERSTON TOWER: 120.6 UNATTENDED: 120.6

ATIS: 129.7



Use Palmerston North QNH



HLDG ACFT may descend to **4100** when established INBD for APCH

MISSED APCH: MAX IAS 185 kt until established on R228. Track 069° to 1000 turn LEFT intercept R228, turn RIGHT PM VOR 5700

Category	A	B	C	D
VOR	660(539) – 2000		660(539) – 3200	
Circling	690(539) – 2000	830(679) – 2800	1100(949) – 3700	*1120(969) – 4600

CAT C/D circling airspace containment not assured.

* CAT D circling NA south of RWY

Effective: 10 NOV 16

PALMERSTON NORTH
VOR RWY 07

