

ELEV 151

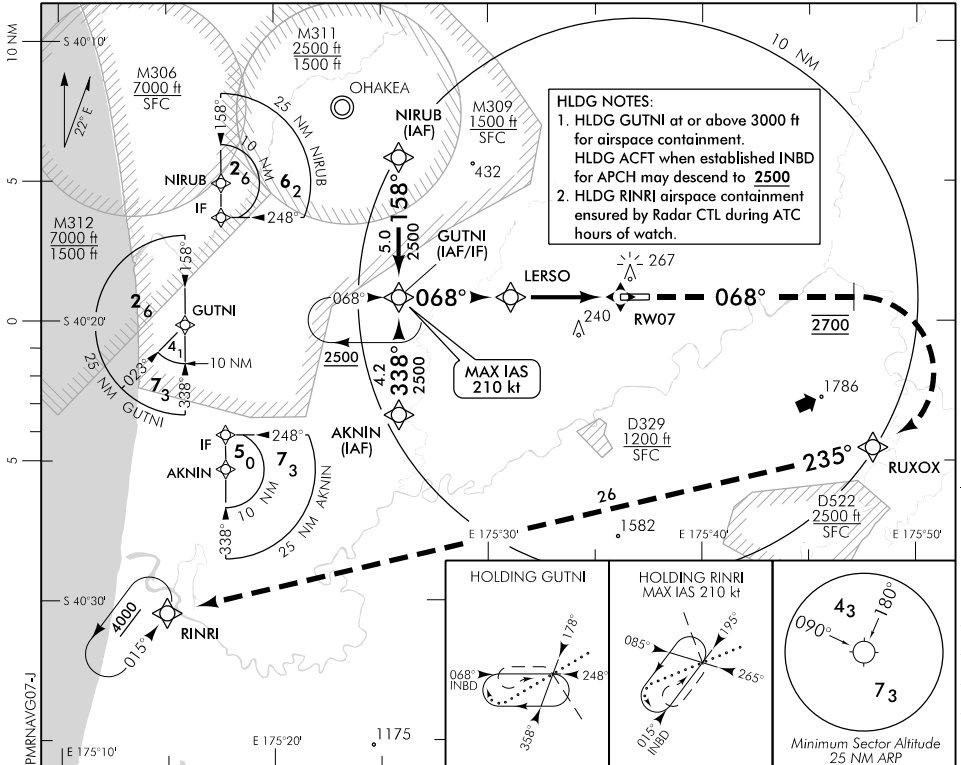
CAT A,B,C,D

PALMERSTON NORTH

RWY 07 THR ELEV 121

RNAV (GNSS) RWY 07

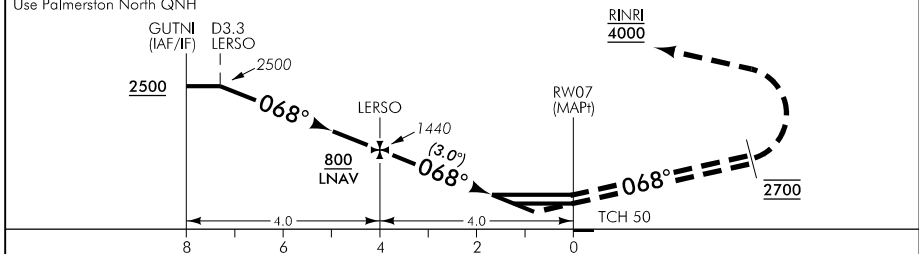
OHAKEA CONTROL: 125.1 128.5 123.2 263.4 PALMERSTON TOWER: 120.6 UNATTENDED: 120.6
 ATIS: 129.7



PNRNAV07-J

Changes from 15 SEP 16: Procedure reviewed and updated, M309 airspace replaces M310.

Use Palmerston North QNH



MISSED APCH: MAX IAS 250 kt to RUXOX. Track 068° to 2700, turn RIGHT direct to RUXOX, track 235° to RINRI 4000

DISTANCE to WPT	GUTNI	3	2	1	LERSO	3	2	1.2	1	RW07
Advisory Altitude 3°	2720	2400	2080	1760	1440	1130	810	MDA	DA	MDA
Category	A			B		C		D		
LNAV/VNAV*	490(369) – 1600				510(389) – 2000			540(419) – 2400		
LNAV – 3.1% +	560(439) – 1600				560(439) – 2400					
LNAV – 2.5% +	770(649) – 2500				770(649) – 3600					
Circling	770(619) – 2500		830(679) – 2800		#1100(949) – 3700		#1120(969) – 4600			
* Valid to AD temperature -10°C. Use of remote QNH NA										CAT D circling NA south of RWY
+ Missed Approach Climb Gradient										
# CAT C/D circling airspace containment not assured.										

Effective: 10 NOV 16

PALMERSTON NORTH

RNAV (GNSS) RWY 07

