

ELEV 151

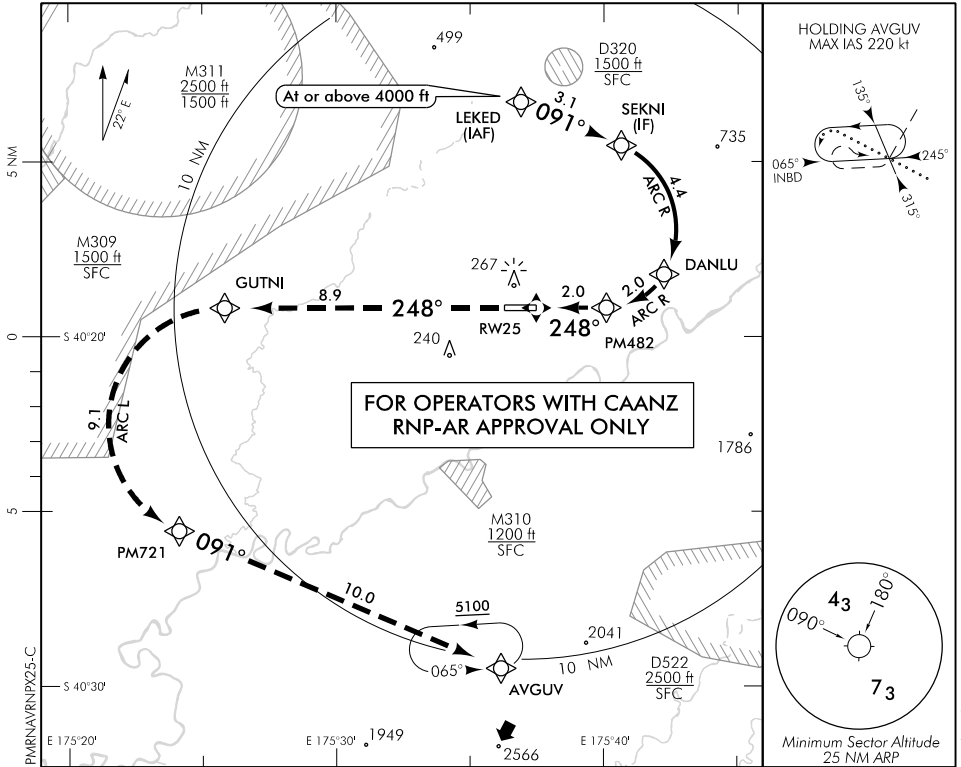
CAT B

PALMERSTON NORTH

RWY 25 THR ELEV 151

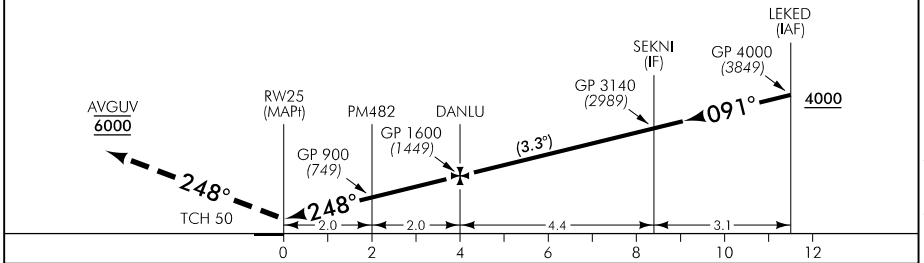
RNAV (RNP) X RWY 25

OHAKEA APPROACH: 125.1 128.5 123.2 263.4 PALMERSTON TOWER: 120.6 UNATTENDED: 120.6
 ATIS: 129.7



**FOR OPERATORS WITH CAANZ
 RNP-AR APPROVAL ONLY**

Use Palmerston North QNH



MISSED APCH: Track via the RNAV (RNP) Missed Approach to AVGUV hold 6000

Category	A	B	C	D
RNP 0.30	NA	520(369) – 1600		NA

1. Procedure NA when AD temperature is below -10°C or above 47°C
2. RF required
3. RNP 0.3 initial and intermediate segments, RNP 1.0 missed APCH segment

Effective: 5 NOV 20

PALMERSTON NORTH

RNAV (RNP) X RWY 25

Changes from 7 NOV 19: OCA table updated.

