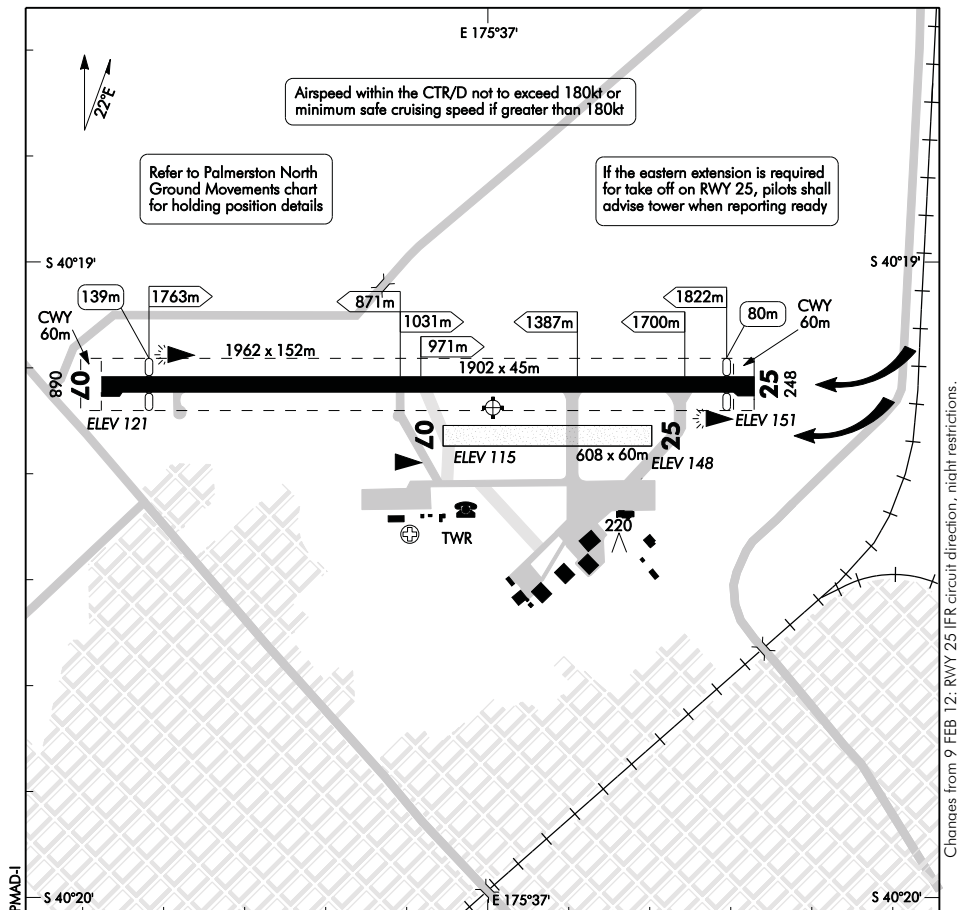


ELEV 151

**PALMERSTON NORTH
AERODROME (1)**

NZPM

PALMERSTON TOWER: 120.6 PALMERSTON GROUND: 121.7 ATIS: 129.7 UNATTENDED: 120.6



1. Circuit: RWY 07 — Left hand
RWY 25 — Right hand RWY 25 — Left hand — Approved IFR aircraft only
ATC may clear an IFR aircraft for a left circling approach and left hand circuit for RWY 25 by day when ceiling less than 2000ft, and at night.
Outside ATC hours operators of aircraft over 5700kg approved by the aerodrome operator on an IFR approach may perform a left circling approach and a left hand circuit for RWY 25.
2. Joining altitude 1500ft. Circuit altitude 1100ft.
3. Simultaneous operations on parallel paved and grass runways permitted only for aircraft below 5700kg in VFR conditions and when ATC is on duty.
4. Take-offs and landings on the apparent NW/SE formed runway are prohibited.
5. Grass RWY becomes very soft after rain.
6. GROUND operates as per ATIS. IFR training and circuit operations may be restricted when GROUND is not operational.

(continued)

S 40 19 14 E 175 37 01

Effective: 26 JUL 12

© Civil Aviation Authority

**PALMERSTON NORTH
AERODROME (1)**

PALMERSTON NORTH
AERODROME (2)

7. Grass operations restricted to taxiways and runways.
8. **CAUTION:** • Bird hazard. Plovers present except during nesting season. Magpies present from late Jan to Aug.
 - Flocks of starlings present during winter. Gulls roost on runway after rain.
9. NORDO aircraft may not operate at Palmerston North aerodrome at night.
10. Night flying restrictions apply for aircraft operating in circuit. Refer NZPM AD 2.20 Local Traffic Regulations.