

ELEV 151

CAT A,B,C,D

PALMERSTON NORTH

NZPM

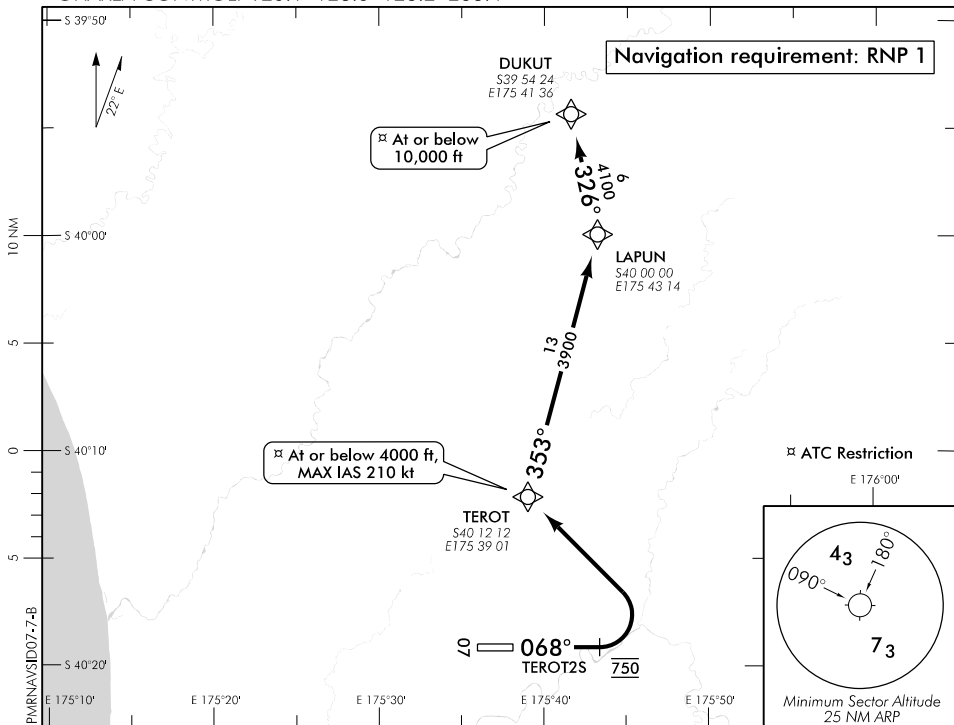
RNAV (GNSS) SID RWY 07 (7)

PALMERSTON TOWER: 120.6

PALMERSTON GROUND: 121.7

ATIS: 129.7

OHAKEA CONTROL: 125.1 128.5 123.2 263.4



ALL DEPARTURES

- Note 1. When PALMERSTON NORTH TOWER on watch all IFR departures contact OHAKEA CONTROL 125.1 MHz airborne, or as instructed
2. Minimum net climb gradient 3.3% (200 ft/NM) unless higher stated

CAUTION: Close-in obstacles not considered in climb gradient

– Trees MAX 290 ft AMSL left and right of extended centreline between 150 m and 1370 m from CWY END

RWY 07

TEROT TWO SIERRA DEPARTURE – RNAV (GNSS) (TEROT2S)

Airspace containment – minimum net climb gradient 11.5% (700 ft/NM) to 4000 ft

- Maintain RWY CL to 750 ft
- Turn LEFT direct to TEROT, MAX IAS 210 kt
- Cross TEROT at or below 4000 ft

TRANSITIONS:

DUKUT

- From TEROT turn RIGHT, track 353° to LAPUN
- Turn LEFT, track 326° to DUKUT
- Cross DUKUT at or below 10,000 ft

ATC requirement:

For routes to HN or AA via OMBUB, route via GULBA on Y445 or as instructed by radar

