

ELEV 151

CAT A,B,C,D

PALMERSTON NORTH

NZPM

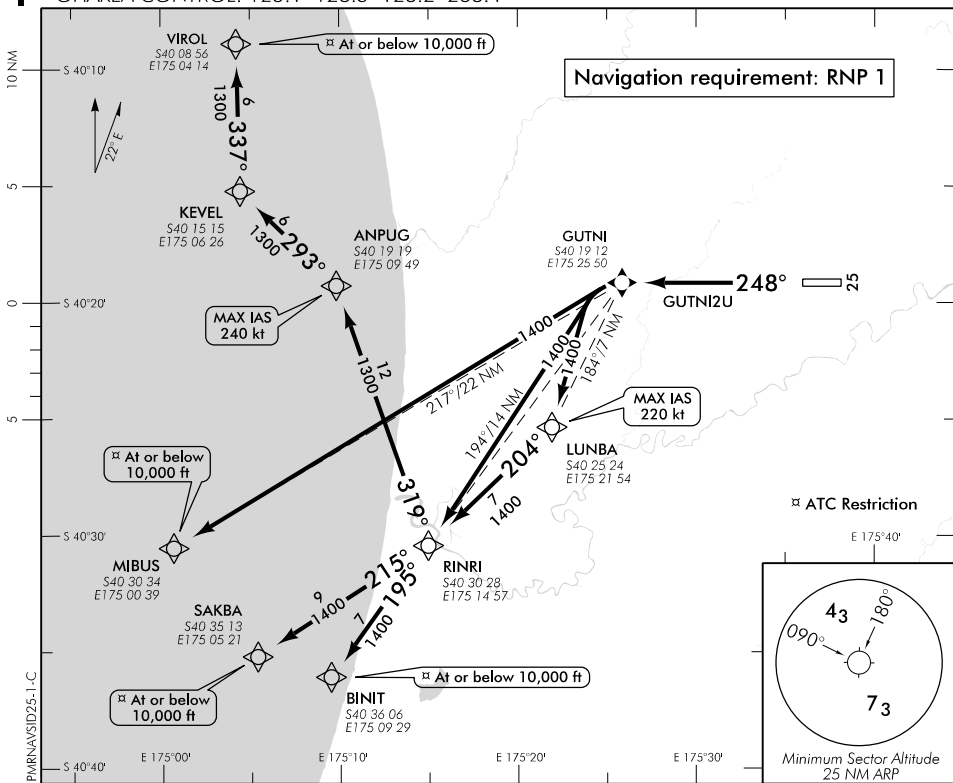
RNAV (GNSS) SID RWY 25 (1)

PALMERSTON TOWER: 120.6

PALMERSTON GROUND: 121.7

ATIS: 129.7

OHAKEA CONTROL: 125.1 128.5 123.2 263.4



ALL DEPARTURES

- Note 1. When PALMERSTON NORTH TOWER on watch all IFR departures contact OHAKEA CONTROL 125.1 MHz airborne, or as instructed
2. Minimum net climb gradient 3.3% (200 ft/NM) unless higher stated

CAUTION: Close-in obstacles not considered in climb gradient
 - Trees MAX 163 ft AMSL 281°/320 m from CWY END

RWY 25

GUTNI TWO UNIFORM DEPARTURE – RNAV (GNSS) (GUTNI2U)

Minimum net climb gradient 3.7% (230 ft/NM) to 650 ft

- Track 248° to GUTNI (flyover)

MIBUS

- From GUTNI (flyover), turn LEFT direct to MIBUS
- Cross MIBUS at or below 10,000 ft

VIROL

- Note: Turn from RINRI to ANPUG requires turn of 115°. If unable to comply advise ATC on start up
- From GUTNI (flyover), turn LEFT direct to LUNBA, MAX IAS 220 kt
 - Turn RIGHT, track 204° to RINRI, MAX IAS 220 kt until turn complete
 - Turn RIGHT, track 319° to ANPUG
 - Turn LEFT, track 293° to KEVEL, MAX IAS 240 kt until turn complete
 - Turn RIGHT track 337° to VIROL
 - Cross VIROL at or below 10,000 ft

TRANSITIONS:

BINIT

- From GUTNI (flyover), turn LEFT direct to RINRI
- Track 195° to BINIT
- Cross BINIT at or below 10,000 ft

SAKBA

- From GUTNI (flyover), turn LEFT direct to RINRI
- Turn RIGHT, track 215° to SAKBA
- Cross SAKBA at or below 10,000 ft

Effective: 20 JUL 17

Changes from 25 MAY 17: FREQ. correction.

PALMERSTON NORTH

RNAV (GNSS) SID RWY 25 (2)

ELEV 151

CAT A,B,C,D

NZPM

PALMERSTON TOWER: 120.6

PALMERSTON GROUND: 121.7

ATIS: 129.7

OHAKEA CONTROL: 125.1 128.5 123.2 263.4

