

ELEV 151

CAT A,B,C,D

PALMERSTON NORTH

NZPM

RNAV (GNSS) SID RWY 25 (3)

PALMERSTON TOWER: 120.6

PALMERSTON GROUND: 121.7

ATIS: 129.7

OHAKEA CONTROL: 125.1 128.5 123.2 263.4

Navigation requirement: RNP 1

ALL DEPARTURES

- Note 1. When PALMERSTON NORTH TOWER on watch all IFR departures contact OHAKEA CONTROL 125.1 MHz airborne, or as instructed
2. Minimum net climb gradient 3.3% (200 ft/NM) unless higher stated

CAUTION: Close-in obstacles not considered in climb gradient
 - Trees MAX 163 ft AMSL 281°/320 m from CWY END

RWY 25

GUTNI TWO ROMEO DEPARTURE – RNAV (GNSS) (GUTNI2R)

Minimum net climb gradient 3.7% (230 ft/NM) to 6500 ft

- Track 248° to GUTNI (flyover)

TRANSITIONS:

Note: RUGVI Transition available OH TMA hours of watch only

RUGVI

- From GUTNI (flyover), turn RIGHT direct to RUGVI
- Cross RUGVI at or below 10,000 ft

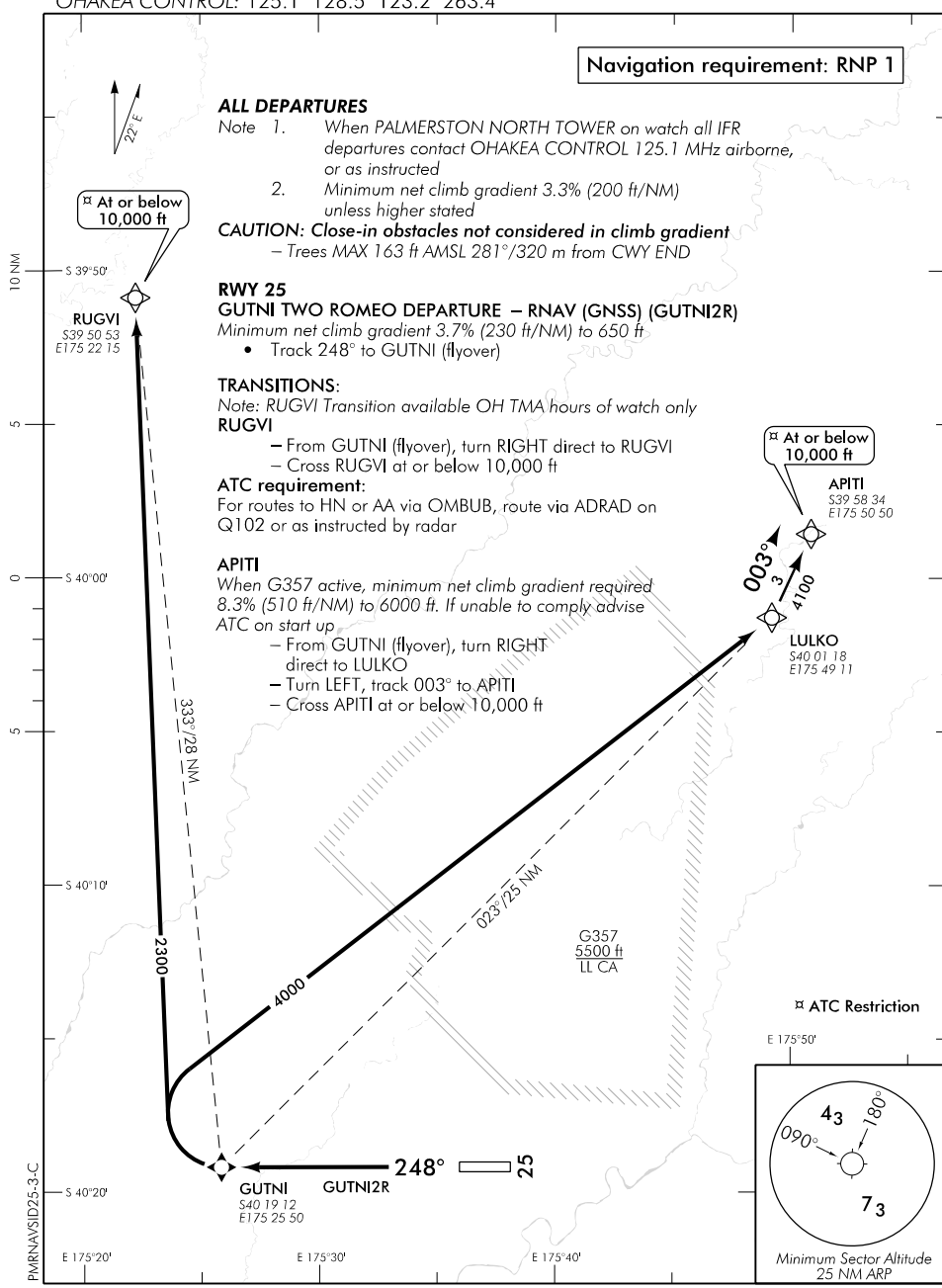
ATC requirement:

For routes to HN or AA via OMBUB, route via ADRAD on Q102 or as instructed by radar

APITI

When G357 active, minimum net climb gradient required 8.3% (510 ft/NM) to 6000 ft. If unable to comply advise ATC on start up

- From GUTNI (flyover), turn RIGHT direct to LULKO
- Turn LEFT, track 003° to APITI
- Cross APITI at or below 10,000 ft



Effective: 9 NOV 17

PALMERSTON NORTH

RNAV (GNSS) SID RWY 25 (4)

ELEV 151

CAT A,B,C,D

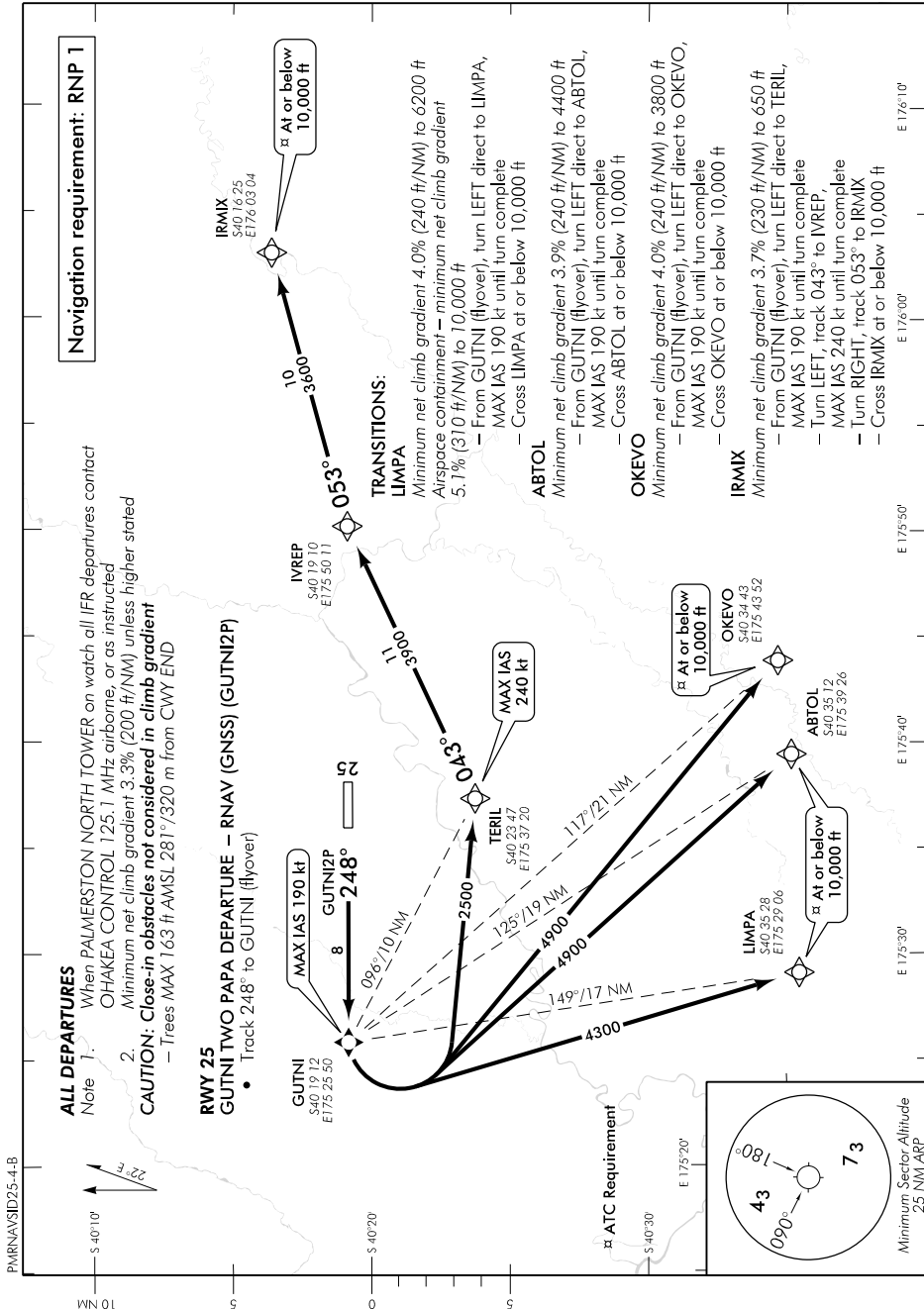
NZPM

PALMERSTON TOWER: 120.6

PALMERSTON GROUND: 121.7

ATIS: 129.7

OHAKEA CONTROL: 125.1 128.5 123.2 263.4



Effective: 25 MAY 17

PALMERSTON NORTH

RNAV (GNSS) SID RWY 25 (4)