

ELEV 151

PALMERSTON NORTH

NZPM

DEPARTURE

PALMERSTON TOWER: 120.6

PALMERSTON GROUND: 121.7

ATIS: 129.7

OHAKEA APPROACH: 125.1 128.5 123.2 263.4

Departure Procedures

Outside Palmerston North TWR hours of service contact Ohakea Approach 125.1 MHz for clearance and traffic information prior to departure. Outside Ohakea Approach hours contact Christchurch Information 125.1 MHz (or Tel 0800 626 756 for landline users only or (03) 358 1509 for cellphone users) for clearance and traffic information prior to entering IMC or controlled airspace.

ATC requirement H24 — all IFR flights cleared for a visual departure at 11,000 ft or above — maintain 10,000 ft to 30 PM.

OCEANIC TRANSITION (to GOPLU, TANEN, GULUT — FL260 or above)

- Maintain 10,000 ft to 30 PM
- Cleared level FL250
- Expect further clearance to filed flight level prior to 100 PM
- Cross NZZC/NZZO FIR BDRY at cleared level or advise ATC if unable

ELEV 151

CAT A,B,C,D

PALMERSTON NORTH

NZPM

SID RWY 07 (1)

PALMERSTON TOWER: 120.6

PALMERSTON GROUND: 121.7

ATIS: 129.7

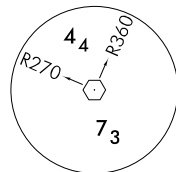
OHAKEA APPROACH: 125.1 128.5 123.2 263.4

DEPARTURE PROCEDURES – Take-off RWY 07

CAUTION: Close-in obstacles not considered in climb gradient.

- Trees with MAX elevation 290 ft AMSL left and right of extended CL between 150 m and 1370 m from CWY end.

- Note
1. When PALMERSTON NORTH TOWER on watch all IFR departures contact OHAKEA APPROACH 125.1 airborne, or as instructed.
 2. ATC restriction H24: all IFR flights cleared at 11,000 ft or above maintain 10,000 ft to 30 PM
 3. Minimum net climb gradient 3.3% (200 ft/NM) unless higher stated
 4. Mandatory LEFT turn at 750 ft unless otherwise stated, MAX IAS 230 kt until within sector



Minimum Sector Altitude
25 NM PM

Evaluated Climb Sector – within 25 NM in sector R200–R360 PM VOR/DME

RWY 07

BRAVO FIVE DEPARTURE (BRAVO5)

To RUAHI, APITI, NOSAM, NR, RIDLA, WEBER, URDAL, ABTOL, DOGAD, OTAKI, PP, PM VOR Hold

Airspace containment not assured

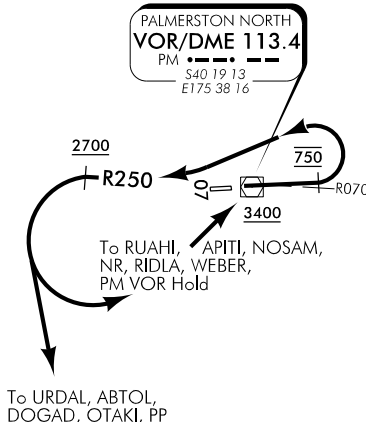
MAX IAS 230 kt until established on R250

To URDAL, ABTOL, DOGAD, OTAKI, PP

- Maintain RWY CL to 750 ft, MANDATORY LEFT TURN at 750 ft
- Intercept R250, climb to MNM 2700 ft
- Turn LEFT, intercept track

To RUAHI, APITI, NOSAM, NR, RIDLA, WEBER, PM VOR Hold

- Maintain RWY CL to 750 ft, MANDATORY LEFT TURN at 750 ft
- Intercept R250, climb to MNM 2700 ft
- Turn LEFT, track to PM VOR reach MNM 3400 ft
- Intercept track



RWY 07

CHARLIE SIX DEPARTURE (CHARLIE6)

To GOPLU, TANEN, GULUT, OH, TM, RUGVI, ARETI, RUAHI, NOSAM, NR, RIDLA, WEBER, PM VOR Hold

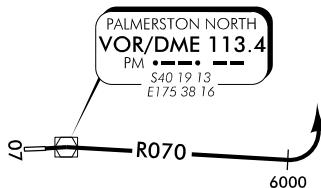
Airspace containment not assured

Minimum net climb gradient 5.0% (300 ft/NM) to 2600 ft

- Intercept R070 climb to MNM 6000 ft
- Turn LEFT, intercept track

Note: ATC may instruct aircraft to turn LEFT at 5000 ft or above.

Aircraft to GOPLU, TANEN, GULUT refer to Oceanic Transition on DEPARTURE page



Changes from 7 NOV 19: Minor change to gradient (ft/NM).

PMSID07-1-X