

ELEV 151

CAT A,B,C,D

PALMERSTON NORTH

NZPM

SID RWY 07 (2)

PALMERSTON TOWER: 120.6

PALMERSTON GROUND: 121.7

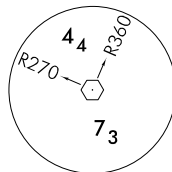
ATIS: 129.7

OHAKEA CONTROL: 125.1 128.5 123.2 263.4

DEPARTURE PROCEDURES – Take-off RWY 07

CAUTION: Close-in obstacles not considered in climb gradient.

- Trees with MAX elevation 290 ft AMSL left and right of extended CL between 150 m and 1370 m from CWY end.



Minimum Sector Altitude
25 NM PM

- Note
1. When PALMERSTON NORTH TOWER on watch all IFR departures contact OHAKEA CONTROL 125.1 airborne, or as instructed.
 2. ATC restriction H24: all IFR flights cleared at 11,000 ft or above maintain 10,000 ft to 30 PM
 3. Minimum net climb gradient 3.3% (200 ft/NM) unless higher stated
 4. Mandatory LEFT turn at 750 ft unless otherwise stated, MAX IAS 230 kt until within sector

Evaluated Climb Sector – within 25 NM in sector R200–R360 PM VOR/DME

RWY 07

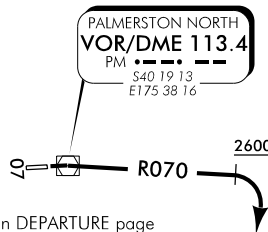
DELTA FOUR DEPARTURE (DELTA4)

To URDAL, ABTOL, MITRE, DOGAD, OTAKI, PP, KAPTI, FOXTN, DUMOT, GOPLU, TANEN, GULUT

Airspace containment not assured

Minimum net climb gradient 5.0% (310 ft/NM) to 3000 ft

- Intercept R070, climb to MNM 2600 ft
- Turn RIGHT, intercept track or as instructed by ATC



Note: Aircraft to GOPLU, TANEN, GULUT refer to Oceanic Transition on DEPARTURE page

RWY 07

ECHO FIVE DEPARTURE (ECHO5)

To PP, KAPTI, FOXTN, DUMOT, GOPLU, TANEN, GULUT, OH, TM, RUGVI, ARETI, RUAHI, NR via APITI or NOSAM

Airspace containment not assured

MAX IAS 230 kt until established on departure track

To KAPTI, FOXTN, DUMOT, GOPLU, TANEN, GULUT, OH, TM, RUGVI, ARETI, RUAHI

- Maintain RWY CL to 750 ft, MANDATORY LEFT TURN at 750 ft
- Intercept track or as instructed by ATC

Note: Aircraft to GOPLU, TANEN, GULUT refer to Oceanic Transition on DEPARTURE page

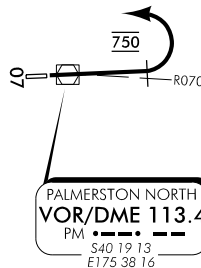
To PP

- Maintain RWY CL to 750 ft, MANDATORY LEFT TURN at 750 ft
- Track to PM VOR reach MNM 1000 ft
- Intercept track or as instructed by ATC

To NR via APITI or NOSAM

Minimum net climb gradient 4.0% (250 ft/NM) to 7200 ft

- Maintain RWY CL to 750 ft, MANDATORY LEFT TURN at 750 ft
- Intercept track



PMSID07-2-R

Changes from 10 NOV 16: Notes editorial.

ELEV 151

CAT A,B,C,D

PALMERSTON NORTH

NZPM

SID RWY 25

PALMERSTON TOWER: 120.6

PALMERSTON GROUND: 121.7

ATIS: 129.7

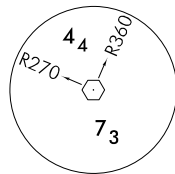
OHAKEA CONTROL: 125.1 128.5 123.2 263.4

DEPARTURE PROCEDURES – Take-off RWY 25

CAUTION: Close-in obstacles not considered in climb gradient.

- Trees with MAX elevation 170 ft AMSL right of extended CL between 250 m and 360 m from CWY end.

- Note 1. When PALMERSTON NORTH TOWER on watch all IFR departures contact OHAKEA CONTROL 125.1 airborne, or as instructed.
2. ATC restriction H24: all IFR flights cleared at 11,000 ft or above maintain 10,000 ft to 30 PM
3. Minimum net climb gradient 3.3% (200 ft/NM) unless higher stated
4. Unless flying a published departure procedure mandatory turn at 650 ft



Evaluated Climb Sector – within 25 NM in sector R200–R360 PM VOR/DME

RWY 25

ALFA ONE DEPARTURE (ALFA1)

To ALL tracks except UVUSI

To NR via APITI

Minimum net climb gradient 3.5% (210 ft/NM) to 7200 ft

To APITI, NOSAM, NR, RIDLA, WEBER

Minimum net climb gradient 6.0% (370 ft/NM) to 4800 ft

To URDAL

Minimum net climb gradient 5.6% (340 ft/NM) to 3400 ft

To ABTOL, MITRE, DOGAD, OTAKI

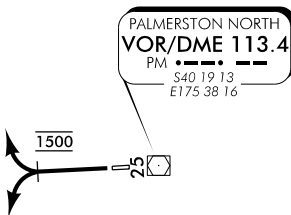
Minimum net climb gradient 5.0% (310 ft/NM) to 5600 ft

To PP

Minimum net climb gradient 4.5% (280 ft/NM) to 3200 ft

- Maintain RWY CL to 1500 ft,
 - At 1500 ft, turn to intercept track or as instructed by ATC
- ATC may instruct aircraft to turn at 650 ft or above

Note: Aircraft to GOPLU, TANEN, GULUT refer to Oceanic Transition on DEPARTURE page



RWY 25

BRAVO FOUR DEPARTURE (BRAVO4)

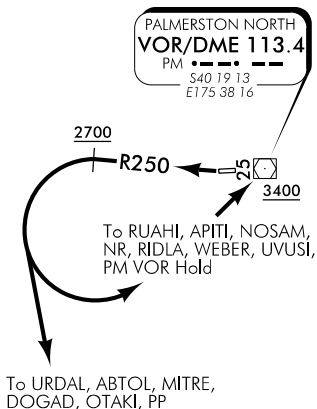
To RUAHI, APITI, NOSAM, NR, RIDLA, WEBER, UVUSI, URDAL, ABTOL, MITRE, DOGAD, OTAKI, PP, PM VOR Hold

To URDAL, ABTOL, MITRE, DOGAD, OTAKI, PP

- Intercept R250, climb to MNM 2700 ft
- Turn LEFT, intercept track

To APITI, RUAHI, NOSAM, NR, RIDLA, WEBER, UVUSI, PM VOR Hold

- Intercept R250, climb to MNM 2700 ft
- Turn LEFT, track to PM VOR reach MNM 3400 ft
- Intercept track



PMSID25-W

Changes from 10 NOV 16: Notes editorial.