

ELEV 151

CAT A,B,C,D

PALMERSTON NORTH

NZPM

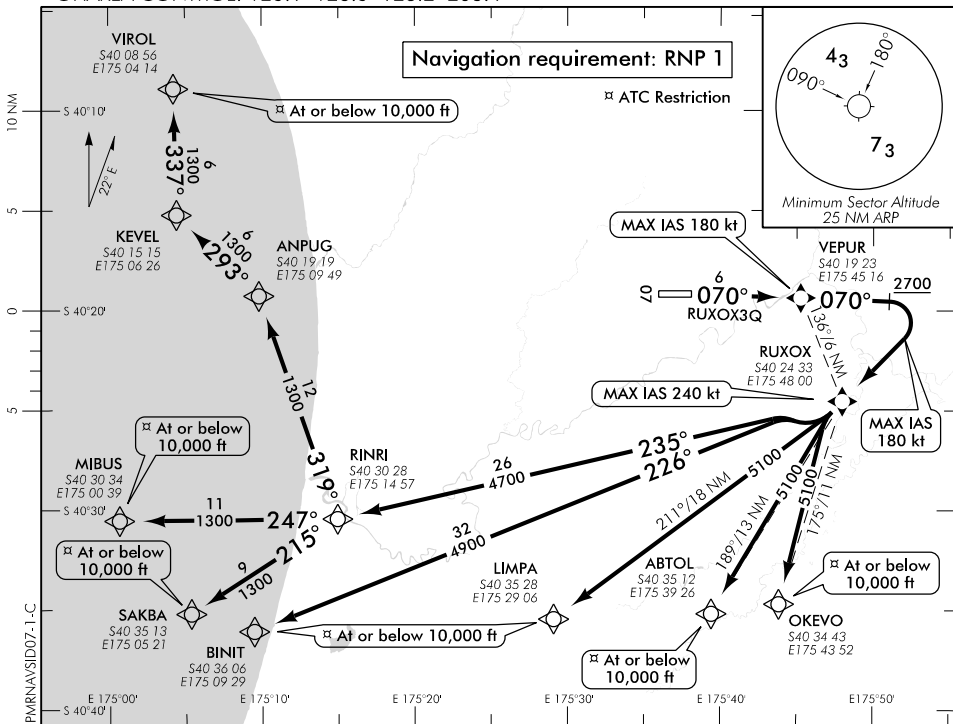
RNAV (GNSS) SID RWY 07 (1)

PALMERSTON TOWER: 120.6

PALMERSTON GROUND: 121.7

ATIS: 129.7

OHAKEA CONTROL: 125.1 128.5 123.2 263.4



ALL DEPARTURES

- Note 1. When PALMERSTON NORTH TOWER on watch all IFR departures contact OHAKEA CONTROL 125.1 MHz airborne, or as instructed
2. Minimum net climb gradient 3.3% (200 ft/NM) unless higher stated

CAUTION: Close-in obstacles not considered in climb gradient

– Trees MAX 290 ft AMSL left and right of extended centreline between 150 m and 1370 m from CWY END

RWY 07

RUXOX THREE QUEBEC DEPARTURE –

RNAV (GNSS) (RUXOX3Q)

Minimum net climb gradient 5.1% (310 ft/NM) to 2800 ft

Airspace containment – minimum net climb gradient

8.9% (540 ft/NM) to 3000 ft

- Track 070° to VEPUR (flyover)
- Track 070° to MNM 2700 ft
- Turn RIGHT direct to RUXOX, MAX IAS 180 kt until turn complete

ATC may require hold down at 4000 ft to RUXOX

TRANSITIONS:

OKEVO

- From RUXOX (flyover), turn direct to OKEVO, MAX IAS 240 kt until turn complete
- Cross OKEVO at or below 10,000 ft

ABTOL

- From RUXOX (flyover), turn direct to ABTOL, MAX IAS 240 kt until turn complete
- Cross ABTOL at or below 10,000 ft

LIMPA

- From RUXOX (flyover), turn RIGHT direct to LIMPA, MAX IAS 240 kt until turn complete
- Cross LIMPA at or below 10,000 ft

BINIT

- From RUXOX (flyover), turn RIGHT, track 226° to BINIT, MAX IAS 240 kt until turn complete
- Cross BINIT at or below 10,000 ft

SAKBA

- From RUXOX (flyover), turn RIGHT, track 235° to RINRI, MAX IAS 240 kt until turn complete
- Turn LEFT, track 215° to SAKBA
- Cross SAKBA at or below 10,000 ft

MIBUS

- From RUXOX (flyover), turn RIGHT, track 235° to RINRI, MAX IAS 240 kt until turn complete
- Turn RIGHT, track 247° to MIBUS
- Cross MIBUS at or below 10,000 ft

VIROL

- From RUXOX (flyover), turn RIGHT, track 235° to RINRI, MAX IAS 240 kt until turn complete
- Turn RIGHT, track 319° to ANPUG
- Turn LEFT, track 293° to KEVEL
- Turn RIGHT, track 337° to VIROL
- Cross VIROL at or below 10,000 ft

Effective: 25 MAY 17

© Civil Aviation Authority

PALMERSTON NORTH
RNAV (GNSS) SID RWY 07 (1)

Changes from 30 MAR 17: SID MSAs added.

ELEV 151

CAT A,B,C,D

PALMERSTON NORTH

NZPM

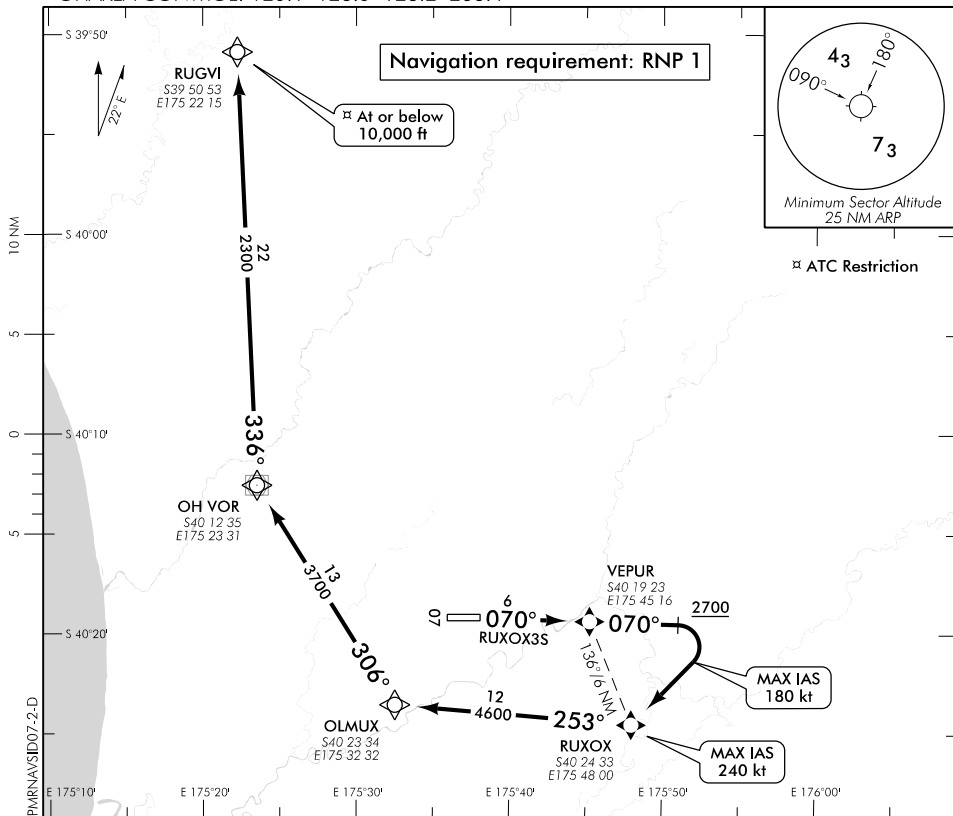
RNAV (GNSS) SID RWY 07 (2)

PALMERSTON TOWER: 120.6

PALMERSTON GROUND: 121.7

ATIS: 129.7

OHAKEA CONTROL: 125.1 128.5 123.2 263.4



Changes from 25 MAY 17: KABEM reference amended to ADRAD.

ALL DEPARTURES

- Note 1. When PALMERSTON NORTH TOWER on watch all IFR departures contact OHAKEA CONTROL 125.1 MHz airborne, or as instructed
2. Minimum net climb gradient 3.3% (200 ft/NM) unless higher stated

CAUTION: Close-in obstacles not considered in climb gradient

- Trees MAX 290 ft AMSL left and right of extended centreline between 150 m and 1370 m from CWY END

RWY 07

RUXOX THREE SIERRA DEPARTURE – RNAV (GNSS) (RUXOX3S)

Minimum net climb gradient 5.1% (310 ft/NM) to 2800 ft

Airspace containment – minimum net climb gradient 8.9% (540 ft/NM) to 3000 ft

- Track 070° to VEPUR (flyover)
- Track 070° to MNM 2700 ft
- Turn RIGHT direct to RUXOX, MAX IAS 180 kt until turn complete

TRANSITIONS:

RUGVI

- From RUXOX (flyover), turn RIGHT, track 253° to OLMUX, MAX IAS 240 kt until turn complete
- Turn RIGHT, track 306° to OH VOR
- Turn RIGHT, track 336° to RUGVI
- Cross RUGVI at or below 10,000 ft

ATC requirement:

For routes to HN or AA via OMBUB, route via ADRAD on Q102 or as instructed by radar

Effective: 9 NOV 17