

ELEV 151

CAT A,B,C,D

PALMERSTON NORTH

NZPM

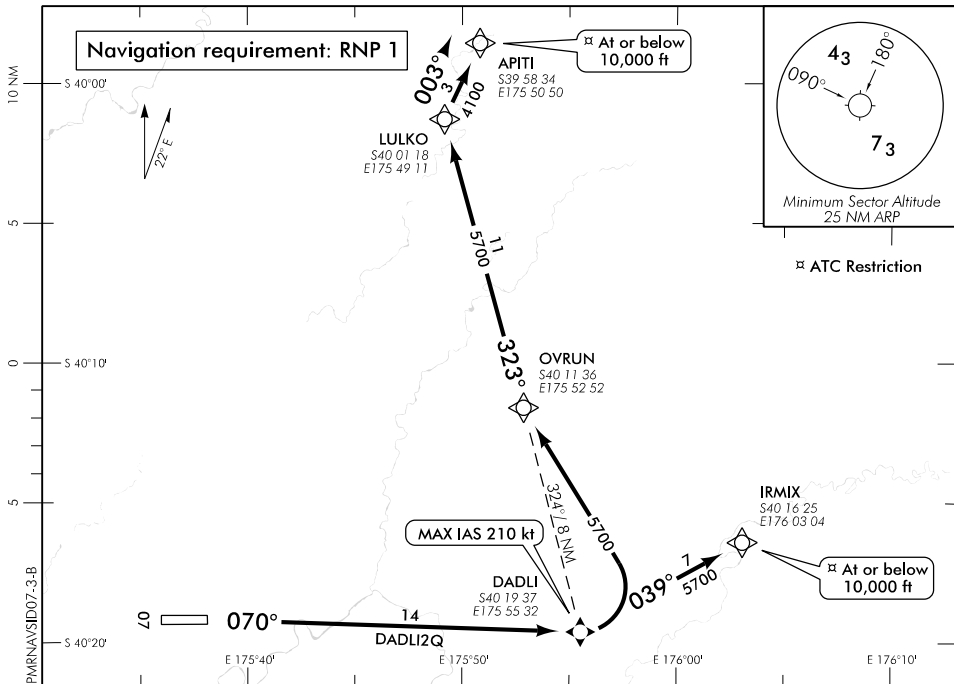
RNAV (GNSS) SID RWY 07 (3)

PALMERSTON TOWER: 120.6

PALMERSTON GROUND: 121.7

ATIS: 129.7

OHAKEA CONTROL: 125.1 128.5 123.2 263.4



Changes from 10 NOV 16: SID MSA's added.

ALL DEPARTURES

- Note 1. When PALMERSTON NORTH TOWER on watch all IFR departures contact OHAKEA CONTROL 125.1 MHz airborne, or as instructed
2. Minimum net climb gradient 3.3% (200 ft/NM) unless higher stated

CAUTION: Close-in obstacles not considered in climb gradient

- Trees MAX 290 ft AMSL left and right of extended centreline between 150 m and 1370 m from CWY END

RWY 07

DADLI TWO QUEBEC DEPARTURE – RNAV (GNSS) (DADLI2Q)

Minimum net climb gradient 5.2% (320 ft/NM) to 4600 ft

Airspace containment – minimum net climb gradient 8.9% (540 ft/NM) to 3000 ft

- Track 070° to DADLI (flyover)

ATC may instruct aircraft to turn LEFT at or above 4500 ft to OVRUN

TRANSITIONS:

APITI

- From DADLI (flyover), turn LEFT direct to OVRUN, MAX IAS 210 kt until turn complete
- Turn RIGHT, track 323° to LULKO
- Turn RIGHT, track 003° to APITI
- Cross APITI at or below 10,000 ft

IRMIX

- From DADLI (flyover), turn LEFT, track 039° to IRMIX
- Cross IRMIX at or below 10,000 ft

Effective: 25 MAY 17

ELEV 151

CAT A,B,C,D

PALMERSTON NORTH

NZPM

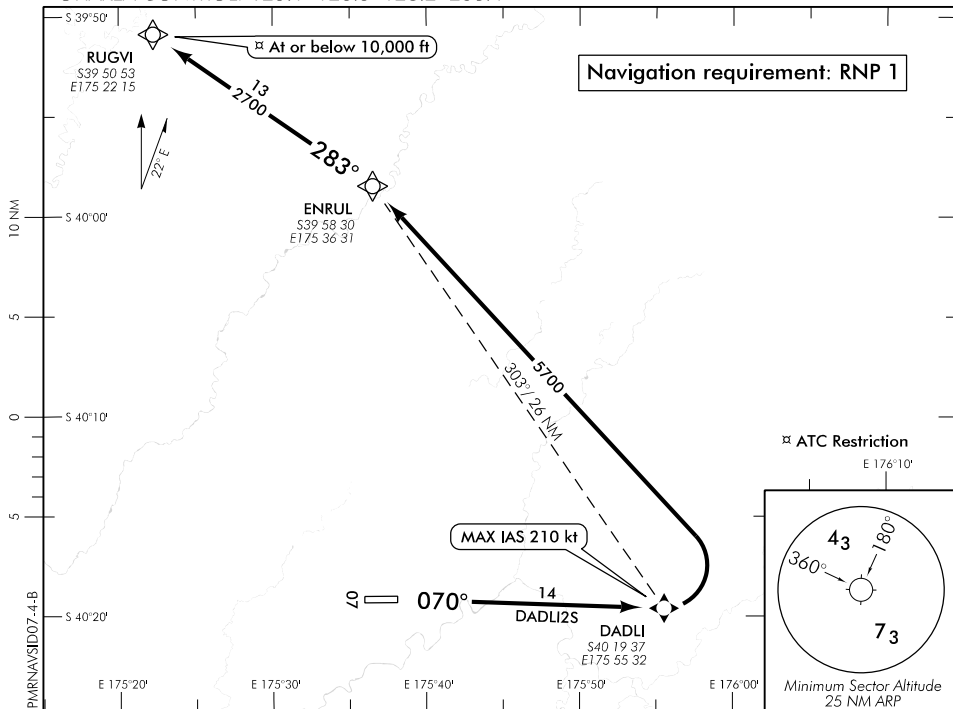
RNAV (GNSS) SID RWY 07 (4)

PALMERSTON TOWER: 120.6

PALMERSTON GROUND: 121.7

ATIS: 129.7

OHAKEA CONTROL: 125.1 128.5 123.2 263.4



Changes from 10 NOV 16: SID MSA's added.

ALL DEPARTURES

- Note 1. When PALMERSTON NORTH TOWER on watch all IFR departures contact OHAKEA CONTROL 125.1 MHz airborne, or as instructed
2. Minimum net climb gradient 3.3% (200 ft/NM) unless higher stated

CAUTION: Close-in obstacles not considered in climb gradient

- Trees MAX 290 ft AMSL left and right of extended centreline between 150 m and 1370 m from CWY END

DADLI TWO SIERRA DEPARTURE – RNAV (GNSS) (DADLI2S)

Minimum net climb gradient 5.2% (320 ft/NM) to 4600 ft

Airspace containment – minimum net climb gradient 8.9% (540 ft/NM) to 3000 ft

- Track 070° to DADLI (flyover)

ATC may instruct aircraft to turn LEFT at or above 4500 ft to ENRUL

TRANSITIONS:

RUGVI

- From DADLI (flyover), turn LEFT direct to ENRUL, MAX IAS 210 kt until turn complete
- Turn LEFT, track 283° to RUGVI
- Cross RUGVI at or below 10,000 ft

ATC requirement:

For routes to HN or AA via OMBUB, route via KABEM on Q102 or as instructed by radar