

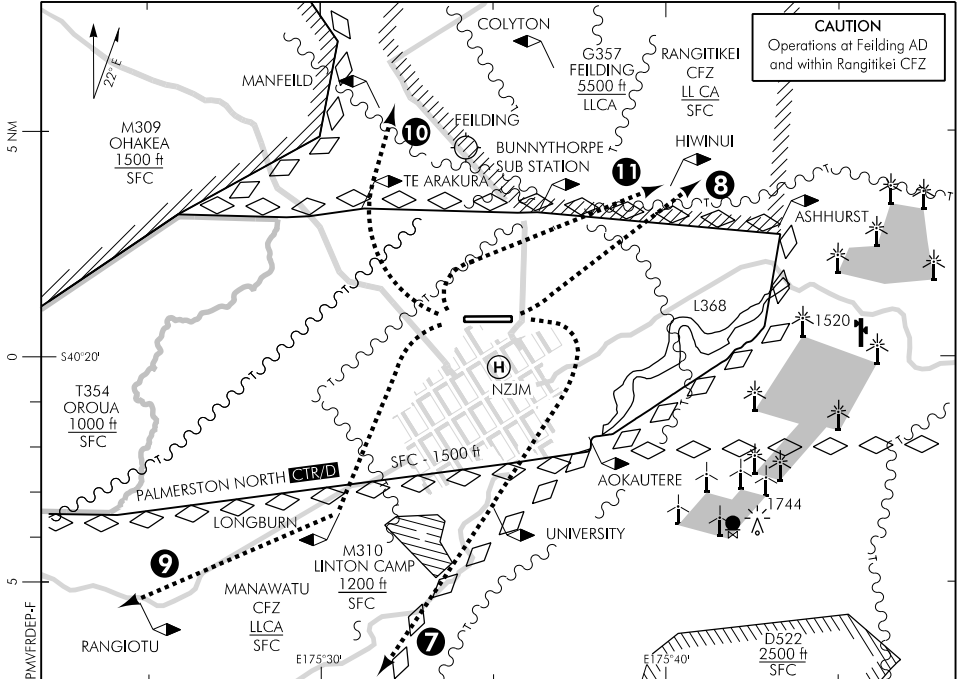
ELEV 151

NZPM

# PALMERSTON NORTH

## VFR DEPARTURE PROCEDURES

TOWER: 120.6 APPROACH: 125.1 GROUND: 121.7 UNATTENDED: 120.6 ATIS: 129.7



REFER ALSO VISUAL NAVIGATION CHARTS

**DEPARTURE PROCEDURES RWY 07:**

- | Designator              | Route                                                                                                                                                                                                           |
|-------------------------|-----------------------------------------------------------------------------------------------------------------------------------------------------------------------------------------------------------------|
| <b>⑦ University DEP</b> | At MNM 650 ft turn <b>RIGHT</b> track to <b>UNIVERSITY 1100 ft or below</b> . Report clear of CTR/D, change to Manawatu Traffic 122.6 MHz and continue tracking towards TOKOMARU.                               |
| <b>⑧ Hiwinui DEP</b>    | At MNM 650 ft turn <b>LEFT</b> track to <b>HIWINUI 1100 ft or below</b> . Report clear of CTR/D, change to Feilding Traffic 124.1 MHz and track east of COLYTON (if northbound) or via ASHHURST (if eastbound). |

**DEPARTURE PROCEDURES RWY 25:**

- |                       |                                                                                                                                                                                                                  |
|-----------------------|------------------------------------------------------------------------------------------------------------------------------------------------------------------------------------------------------------------|
| <b>⑨ Longburn DEP</b> | At MNM 650 ft turn <b>LEFT</b> track to <b>LONGBURN 1100 ft or below</b> . Report clear of CTR/D, change to Manawatu Traffic 122.6 MHz and continue tracking towards RANGIOTU.                                   |
| <b>⑩ Manfeild DEP</b> | At MNM 650 ft turn <b>RIGHT</b> track to <b>MANFEILD 1100 ft or below</b> . Report clear of CTR/D, change to Feilding Traffic 124.1 MHz.                                                                         |
| <b>⑪ Hiwinui DEP</b>  | At MNM 650 ft turn <b>RIGHT</b> track to <b>HIWINUI 1100 ft or below</b> . Report clear of CTR/D, change to Feilding Traffic 124.1 MHz and track east of COLYTON (if northbound) or via ASHHURST (if eastbound). |

Subject to MET conditions, amended altitude instructions may be issued. More direct plain language clearances may be issued on request, or in periods of low traffic density.

Effective: 16 JUL 20

