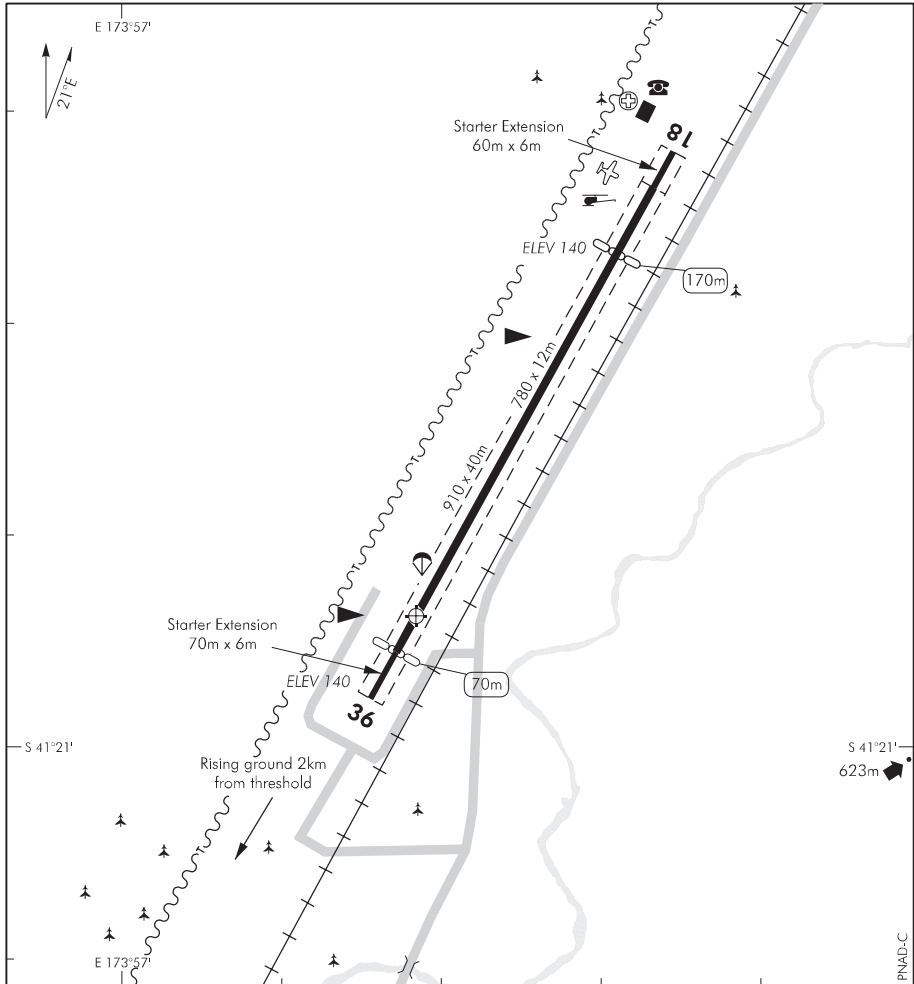


ELEV 140

NZPN

UNATTENDED: 123.0

NON-CERTIFICATED

**PICTON
AERODROME**

Changes from 4 AUG 05: Starter extensions, RWY extension, facilities.

PNAD-C

1. **CAUTION:** Severe turbulence and windshear during moderate wind conditions. Extreme care should be exercised with low powered aircraft.
2. To comply with noise abatement requirements, no landings or run-ups permitted within 100m of northern and southern boundaries.
3. Frequent scheduled (passenger) air transport operations. Pilots transiting or joining advise intentions on 123.0 MHz prior to entering the Koromiko Valley.
4. Landings and take-offs prohibited while aircraft are parked outside terminal building.
5. Parking available along western boundary at northern end.
6. Sounds Air aircraft may use right hand circuit due to local wind conditions.

S 41 20 54 E 173 57 19*

Effective: 7 JUN 07

© Civil Aviation Authority

**PICTON
AERODROME**

Non-Certificated Aerodrome 4 NM S of Picton

PICTON

NZPN

OPERATIONAL DATA**RWY**

RWY	SFC	Strength	Gp	Slope	ASDA	Take-off distance			LDG DIST
						1:20	1:30	1:40	
18 18	B	ESWL 5700	6 5	Nil		840 ¹			670
36	B	ESWL 5700	6	Nil		740 ²			780

¹ Includes 60m of northern starter extension² Includes 70m of southern starter extension**LIGHTING**

Nil

FACILITIES

Nil

SUPPLEMENTARY

Operator: Sounds Air Travel and Tourism Ltd, PO Box 116, Picton.

Available for limited use by prior arrangement with Sounds Air on each occasion Tel 0800 505 005.

Landing and parking fees payable.

ELEV 140

NZPN

**PICTON
DEPARTURE**

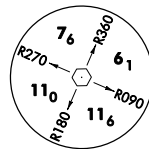
WOODBOURNE TOWER: 122.8 118.1 WELLINGTON CTL: 121.1 119.3 122.3 UNATTENDED: 123.0

Pre-flight clearance required from Woodbourne Tower. Outside Woodbourne Tower hours contact Wellington Control 121.1 MHz for clearance and traffic information prior to entering IMC or controlled airspace

Departure procedures

Minimum net climb gradient 3.3% (200ft/NM)

CAUTION : Aerodrome surrounded by mountainous terrain



Minimum Sector Altitude 25NM WB

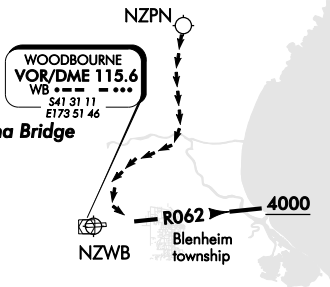
XRAY ONE Departure – (XRAY1)

ALL DEPARTURES

←←←←← Denotes Visual departure segment

Proceed VFR to enter the Woodbourne CTR/D abeam Tuamarina Bridge

Maintain terrain clearance visually until established on R062 WB VOR west of Blenheim township



- Intercept R062 WB VOR climb to 4000ft, expect radar control
- On reaching 4000ft, if no contact with ATC turn LEFT, continue climb to 6000ft
- Enter WB VOR holding pattern

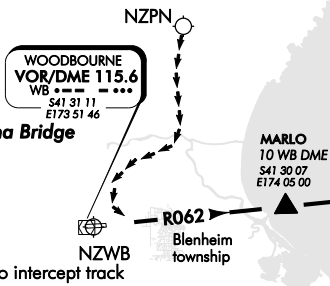
ZULU TWO Departure – (ZULU2)

ALL DEPARTURES

←←←←← Denotes Visual departure segment

Proceed VFR to enter the Woodbourne CTR/D abeam Tuamarina Bridge

Maintain terrain clearance visually until established on R062 WB VOR west of Blenheim township



- Intercept R062 WB VOR, track to MARLO (10 WB DME)
- At MARLO (10 WB DME) or beyond on R062 at MNM 3000ft turn to intercept track

- NOTE:**
1. ATC may approve LEFT or RIGHT turn to intercept track prior to MARLO, provided aircraft has established on R062 and reached MNM 4000ft.
 2. ATC may require aircraft to maintain MNM 3000ft to MARLO (10 WB DME)

PNDEP-G

Changes from 2 AUG 07: ZULU2.

FOR SOUNDSAIR APPROVED OPERATORS ONLY

