

ELEV 1171

CAT A,B,C,D

QUEENSTOWN

NZQN

RNAV (GNSS) STAR RWY 05 (1)

TOWER: 118.1 128.9

APPROACH: 125.75

ATIS: 126.4

UNATTENDED: 118.1

CN:RNAVSTAR05-1-E



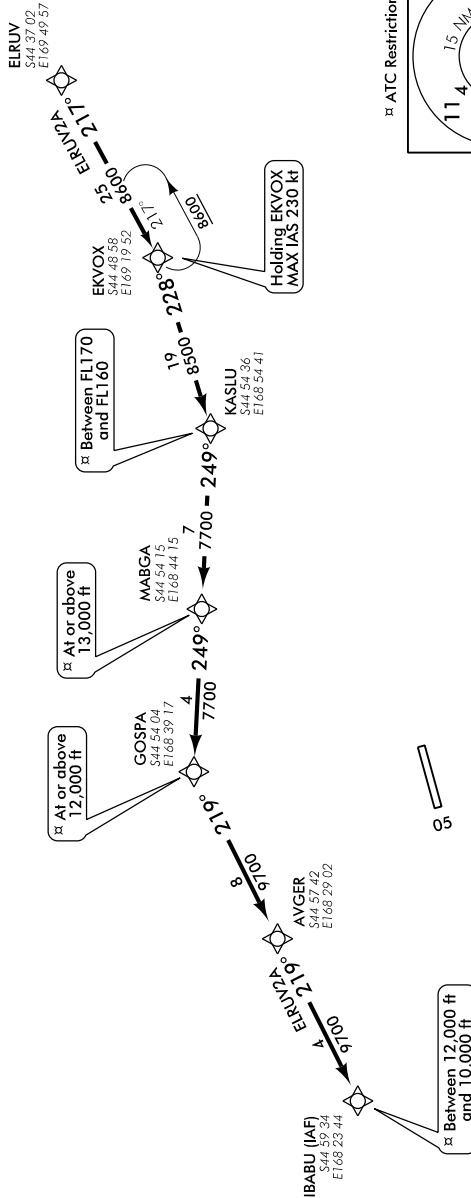
**RWY 05**

**ELRUV TWO ALFA ARRIVAL – RNAV (GNSS) (ELRUV2A)**

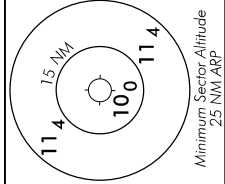
- Track 217° to EKVOX
- Track 228° to KASLU between FL170 and FL160
- Track 249° via MABGA to GOSPA
- Cross MABGA at or above 13,000 ft
- Cross GOSPA at or above 12,000 ft
- Track 219° via AVGER to IBABU
- Cross IBABU between 12,000 ft and 10,000 ft

Navigation requirement: RNP 1

**CAUTION**  
Aerodrome surrounded by mountainous terrain



ATC Restriction



NOT TO SCALE

Effective: 8 NOV 18

© Civil Aviation Authority

QUEENSTOWN  
RNAV (GNSS) STAR RWY 05 (1)

Changes from 9 NOV 17: CAT D added in header.

ELEV 1171

CAT A,B,C,D

# QUEENSTOWN

ZNZN

## RNAV (GNSS) STAR RWY 05 (2)

TOWER: 118.1 128.9

APPROACH: 125.75

ATIS: 126.4

UNATTENDED: 118.1

**Navigation requirement: RNP 1**

**RWY 05**  
**UBDAM THREE ALFA ARRIVAL – RNAV (GNSS) (UBDAM3A)**

**TRANSITIONS:**

**ADKOS**  
– From ADKOS track 063° to BEVKO  
– Track 071° via IGNET to UBDAM

**LIBLA**  
– From LIBLA track 121° to AKBOB  
– Track 120° via DULIG to UBDAM

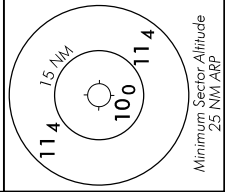
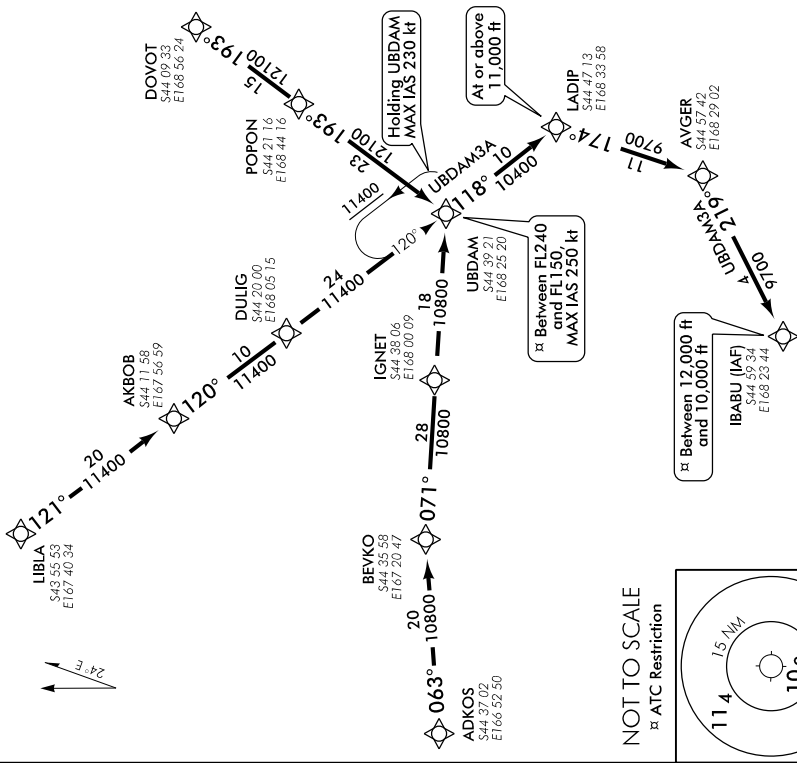
**DOVOT**  
– From DOVOT track 193° via POPON to UBDAM

- Cross UBDAM between FL240 and FL150, MAX IAS 250 kt
- Track 118° to LADIP
- Cross LADIP at or above 11,000 ft
- Track 174° to AVGER
- Track 219° to IBABU
- Cross IBABU between 12,000 ft and 10,000 ft

**ALL ARRIVALS**

- At EKODA, MADOK, DADLU, or BEBOB contact CHRISTCHURCH CONTROL 129.3 MHz reporting position and level.
- ATC will issue appropriate STAR/Transition.
- Descend via STAR/Transition to ATC cleared level.
- If unable RNAV, expect radar vectors or alternative routing.

**CAUTION**  
Aerodrome surrounded by mountainous terrain



Changes from 8 NOV 18: Arrivals crossing FIR Boundary text.

QNZN STAR05-2-F

Effective: 23 MAY 19

© Civil Aviation Authority

# QUEENSTOWN

## RNAV (GNSS) STAR RWY 05 (2)