

ELEV 1171

CAT A,B,C

QUEENSTOWN

NZQN

RNAV (GNSS) STAR RWY 05 (3)

TOWER: 118.1 128.9

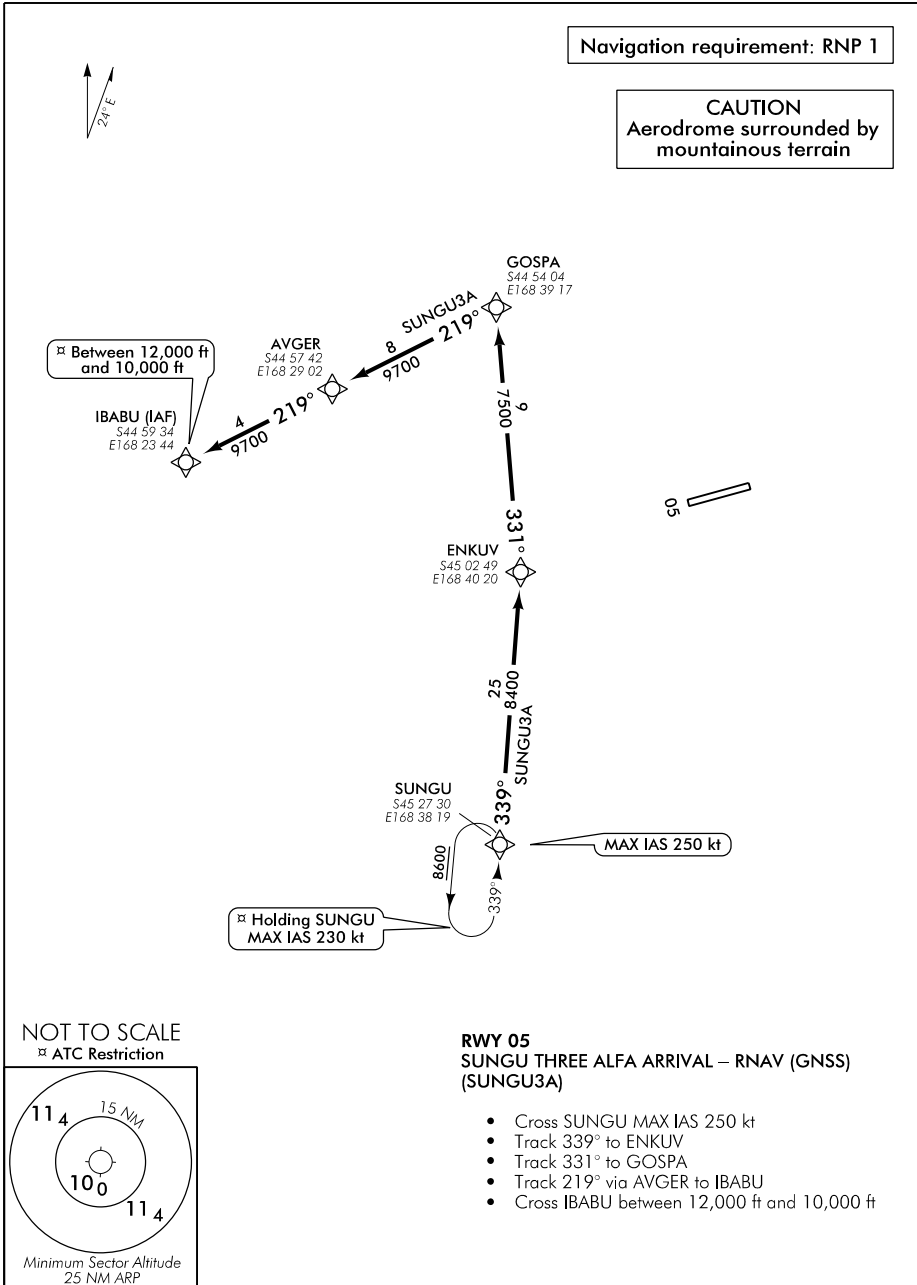
APPROACH: 125.75

ATIS: 126.4

UNATTENDED: 118.1

Navigation requirement: RNP 1

CAUTION
Aerodrome surrounded by mountainous terrain



Between 12,000 ft and 10,000 ft

IBABU (IAF)
S44 59 34
E168 23 44

AVGER
S44 57 42
E168 29 02

8 SUNGU3A
9700 219°

GOSPA
S44 54 04
E168 39 17

ENKUV
S45 02 49
E168 40 20

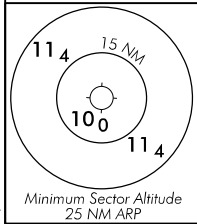
2.5 8400 331°
SUNGU3A

SUNGU
S46 27 30
E168 38 19

MAX IAS 250 kt

Holding SUNGU
MAX IAS 230 kt

NOT TO SCALE
ATC Restriction



RWY 05
SUNGU THREE ALFA ARRIVAL – RNAV (GNSS) (SUNGU3A)

- Cross SUNGU MAX IAS 250 kt
- Track 339° to ENKUV
- Track 331° to GOSPA
- Track 219° via AVGER to IBABU
- Cross IBABU between 12,000 ft and 10,000 ft

GNRNAVSTAR05-3-D

Changes from 28 MAY 15: Minor track adjustments, SUNGU hold restrictions updated.

Effective: 9 NOV 17

ELEV 1171

CAT A,B,C

QUEENSTOWN

NZQN

RNAV (GNSS) STAR RWY 23 (1)

TOWER: 118.1 128.9

APPROACH: 125.75

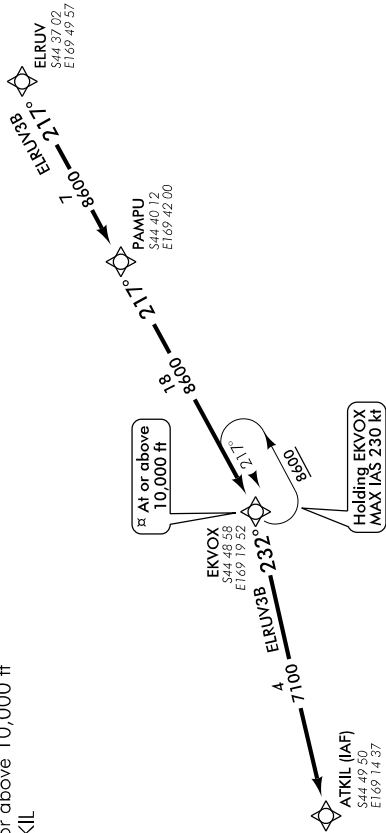
ATIS: 126.4

UNATTENDED: 118.1

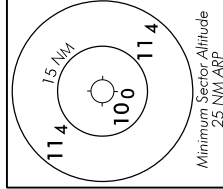
Navigation requirement: RNP 1

RWY 23 ELRUV THREE BRAVO ARRIVAL – RNAV (GNSS) (ELRUV3B)

- Track 217° via PAMPU to EKVOX
- Cross EKVOX at or above 10,000 ft
- Track 232° to ATKIL



NOT TO SCALE
ATC Restriction



CAUTION
Aerodrome surrounded by
mountainous terrain

23

Changes from 28 MAY 15: Restrictions updated at EKVOX and PAMPU, minor track adjustment.

QNRRNAVSTAR23-1-D