

ELEV 1171

QUEENSTOWN

NZQN

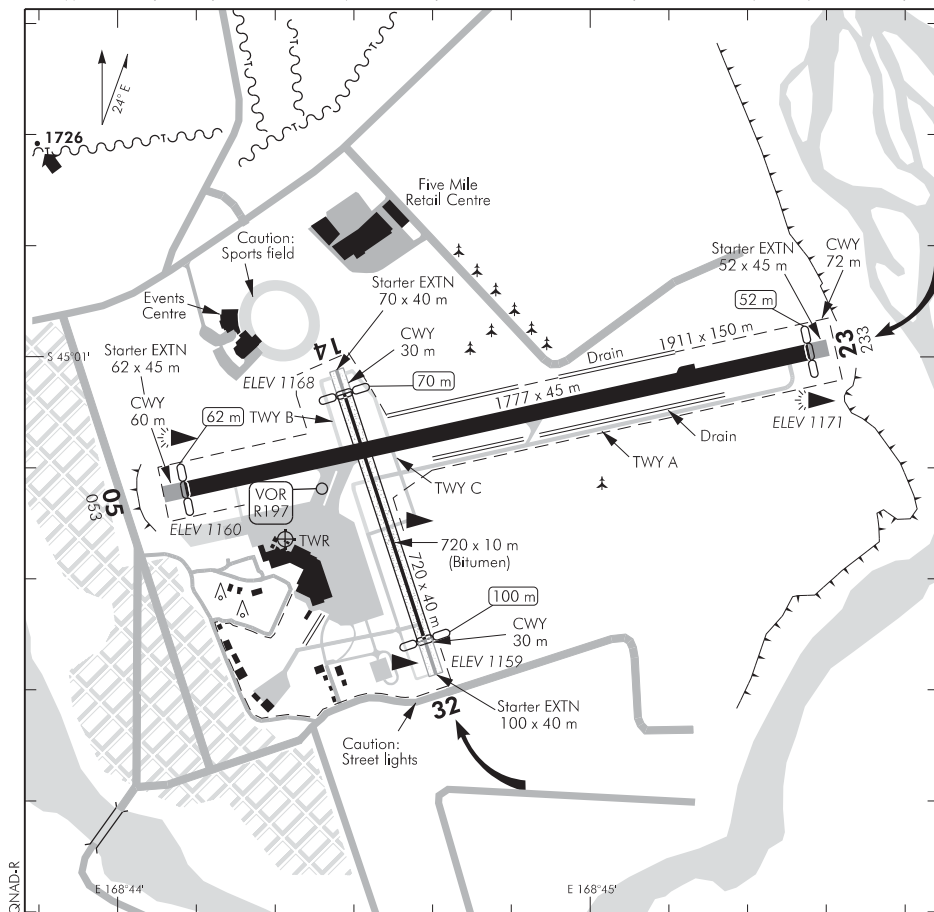
AERODROME (1)

TOWER: 118.1 128.9

DELIVERY: 121.9

ATIS: 126.4

UNATTENDED: 118.1



- Landing lights are to be used if possible within 10 NM of Queenstown aerodrome below 6000 ft.
- Circuit: RWY 05, 14 — Left hand
RWY 23, 32 — Right hand
When ATC is on watch, unless otherwise instructed, circuit altitude is 2200 ft AMSL.
Circuit procedures for all IFR ACFT and ACFT MCTOW greater than 5700 kg — see Aerodrome (3).
- CAUTION:**
 - RWY 05 final approach. High terrain on north side of Frankton Arm at 2.4 NM from threshold.
 - RWY 23 final approach. High terrain to the south at 3 NM, and north and south at 1.3 NM from threshold.

WARNING PAPI RWYs 05 and 23 not usable outside 4 NM from respective threshold. PAPI only to be used at night when established on RWY CL between DA and THR due terrain.
RWY 05 — see Note 5 under LIGHTING on Operational Data page.

*(continued)***Effective: 9 NOV 17**

S 45 01 16 E 168 44 21

© Civil Aviation Authority

**QUEENSTOWN
AERODROME (1)**

QUEENSTOWN

AERODROME (2)

4. **CAUTION:**
 - All circuits restricted due terrain. Ensure terrain clearance, especially RWY 14 departure.
 - Down draughts likely crossing river on approach to RWY 23.
 - RWY 14 approach. High terrain with trees 1 NM to the north of threshold.
5. Aircraft on final approach to RWY 05 should track along the centre of Frankton Arm to intersect the extended runway centreline not below 500 ft AGL.
6. All jet aircraft Code C and above must use the turning nodes at RWY 05/23 thresholds for turning.
7. **CAUTION:** Sports field located on short final to Sealed/Grass RWY 14 on extended runway centreline.
8. All aircraft to use full length RWY 23 for take-off unless requested otherwise by ATC.
9. Departures:
 - RWY 14 — Ensure terrain clearance. Visual reference problems may be encountered due to proximity of The Remarkables range.
 - RWY 32 — Turn right after crossing runway end to ensure obstacle clearance. High terrain close to north and northwest of aerodrome.
 - Pilots may request an alternative to standard circuit departure.
10. Extensive low level helicopter activity at Shotover River/Arthurs Point/Skipppers Saddle area. See traffic flow arrows on VNC.
11. Microlight aircraft, gliders, parachute, parapente and balloon operations at the aerodrome are not permitted unless in an emergency or with prior approval from Queenstown Airport Corporation on Tel (03) 450 9031.
12. **CAUTION:** Bird hazard. Gulls, oystercatchers and plovers seasonally abundant.
13. Sealed/Grass RWY 14/32 limited to aircraft with MCTOW 5700 kg or less at or below 16 m wingspan. 10 m central sealed section limited to aircraft with main landing gear track 5 m or less.
14. Aircraft arrivals and departures between 2200 hours local to 0600 hours local not permitted unless an emergency.
15. Delays may be experienced at times by VFR training aircraft. Prior to start, contact Queenstown TWR (03) 450 9182 to ascertain appropriate time for operations in the circuit.
16. G756 Skyline active for Approved Operators during daylight hours.
17. Engine running refuelling is prohibited on the northern side of the main terminal apron fuel pumps.