

ELEV 1171

CAT A,B,C

# QUEENSTOWN

NZQN

## RNAV (GNSS) SID RWY 05 (5)

TOWER: 118.1 128.9

APPROACH: 125.75

ATIS: 126.4

UNATTENDED: 118.1

Navigation requirement: RNP 1

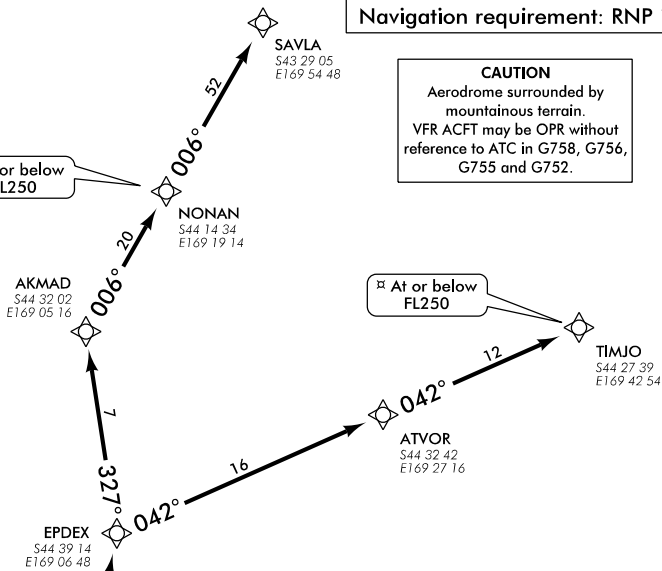
**CAUTION**  
 Aerodrome surrounded by mountainous terrain.  
 VFR ACFT may be OPR without reference to ATC in G758, G756, G755 and G752.



At or below FL250

At or below FL250

Between 10,000 ft and At FL150



### RWY 05 EPDEX THREE PAPA DEPARTURE – RNAV (GNSS) (EPDEX3P)

- Note
1. Visual segment not shown. See chart NZQN AD 2 - 62.10 RNAV (GNSS) SID RWY 05 (4) for details of visual segment.
  2. Minimum net climb gradient 3.3% (200 ft/NM)

- Reach MNM 10,000 ft MAX FL150 overhead GIXEL
- Track 346° to EPDEX

#### TRANSITIONS:

##### SAVLA

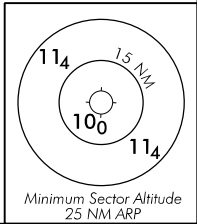
Airspace containment – Minimum net climb gradient 9.2% (560 ft/NM) to FL250

- From EPDEX track 327° to AKMAD
- Turn RIGHT track 006° via NONAN to SAVLA
- Cross NONAN at or below FL250

##### TIMJO

Airspace containment – Minimum net climb gradient 9.2% (560 ft/NM) to EPDEX

- From EPDEX track 042° via ATVOR to TIMJO
- Cross TIMJO at or below FL250



NOT TO SCALE  
 At ATC Restriction

Minimum Sector Altitude  
 25 NM ARP

QNIRNAV/SID05-5-E

Changes from 25 MAY 17: Procedure review.

**Effective: 9 NOV 17**

