

ELEV 1171

CAT A,B,C

**QUEENSTOWN**

NZQN

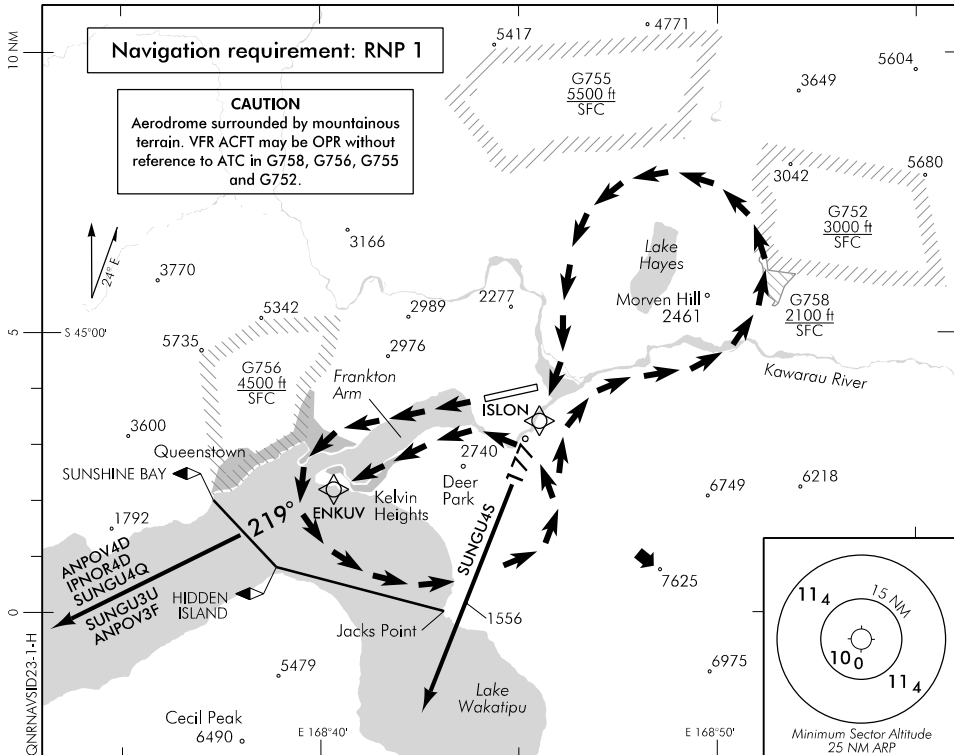
**RNAV (GNSS) SID RWY 23 (1)**

TOWER: 118.1 128.9

APPROACH: 125.75

ATIS: 126.4

UNATTENDED: 118.1



**ALL DEPARTURES RWY 23 – Visual Segments**

- Note 1. Minimum turn altitude after take-off 1600 ft  
 2. Remain north-east of a line SUNSHINE BAY VRP – HIDDEN ISLAND VRP – Jacks Point  
 3. When Queenstown Tower on watch: Passing 7000 ft contact QUEENSTOWN  
 APPROACH 125.75 MHz advising departure being flown
- ← ← Denotes visual segment

**MAX IAS 180 kt. Maintain own terrain clearance until established overhead Initial Departure Fix (IDF)**

**Departures via ENKUV (ANPOV4D, IPNOR4D, SUNGU4Q, SUNGU3U, ANPOV3F)**

- Follow the Frankton Arm until abeam Kelvin Heights
- Turn LEFT around Deer Park to track 219° to ENKUV (IDF)

ENKUV crossing altitudes:

ANPOV4D – MNM 4600 ft	SUNGU3U – MNM 5200 ft
IPNOR4D – MNM 5200 ft	ANPOV3F – MNM 5200 ft
SUNGU4Q – MNM 4200 ft	

**Departures via ISLON (SUNGU4S)**

- Follow the Frankton Arm until abeam Kelvin Heights
- Turn LEFT around Deer Park and follow the Kawarau River
- Turn LEFT abeam Marven Hill
- Continue LEFT to track 177° to ISLON (IDF)
- Reach MNM 3900 ft, MAX 9000 ft overhead ISLON

Refer chart NZQN AD2 - 62.13 RNAV (GNSS) SID RWY 23 (2) for details of ANPOV3F and IPNOR4D and chart NZQN AD 2 - 62.14, RNAV (GNSS) SID RWY 23 (3) for details of ANPOV4D and chart NZQN AD 2 - 62.15, RNAV (GNSS) SID RWY 23 (4) for details of SUNGU4Q and SUNGU4S and chart NZQN AD 2 - 62.16 RNAV (GNSS) SID RWY 23 (5) for details of SUNGU3U.

**Effective: 9 NOV 17**

Changes from 25 MAY 17: Procedure review.

ELEV 1171

CAT A,B,C

# QUEENSTOWN

NZQN

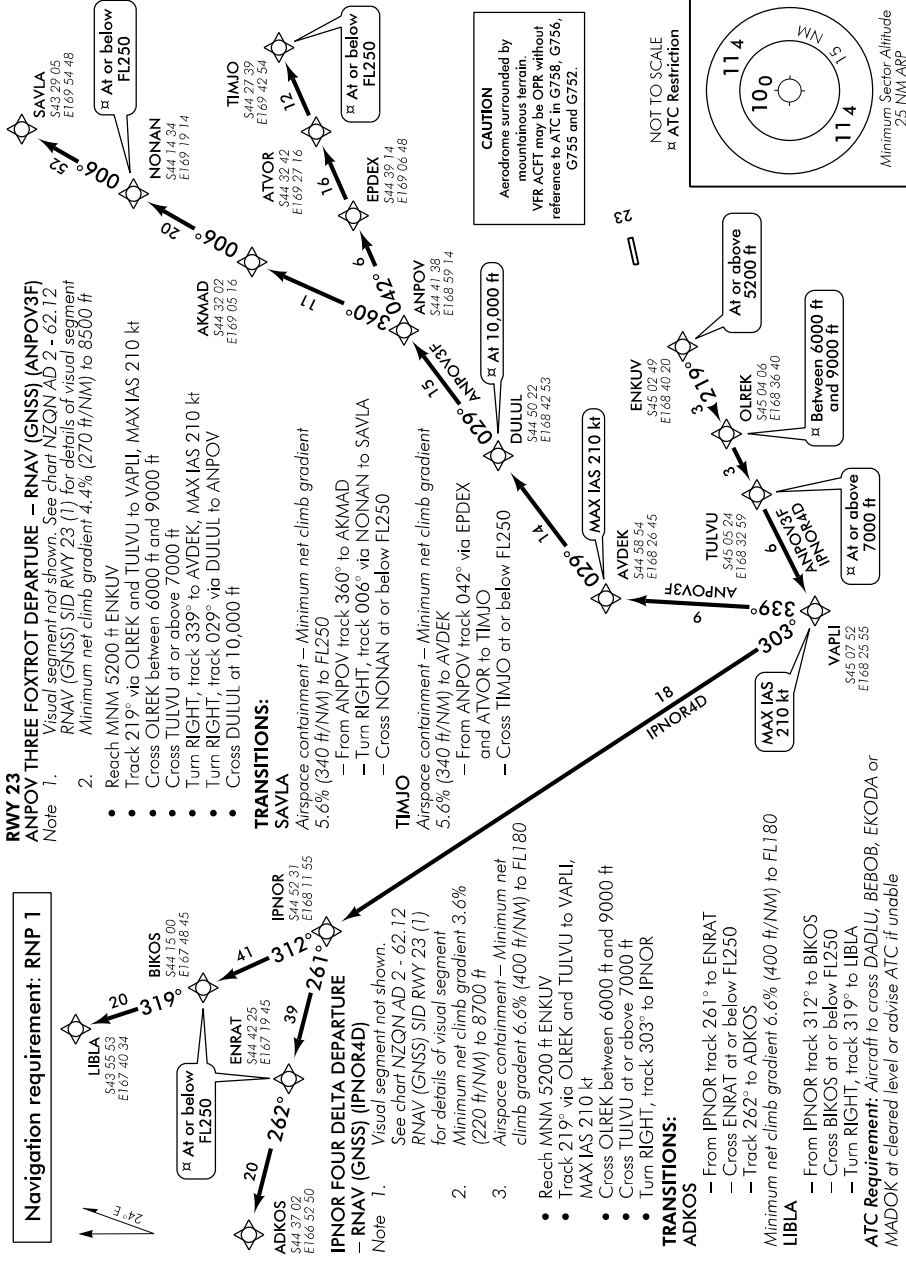
## RNAV (GNSS) SID RWY 23 (2)

TOWER: 118.1 128.9

APPROACH: 125.75

ATIS: 126.4

UNATTENDED: 118.1



GNRNVA5ID23-2-H