

ELEV 1171

CAT A,B,C

QUEENSTOWN

NZQN

RNAV (GNSS) SID RWY 23 (3)

TOWER: 118.1 128.9

APPROACH: 125.75

ATIS: 126.4

UNATTENDED: 118.1

CN:RNAV/SID23-34



Navigation requirement: RNP 1

CAUTION
Aerodrome surrounded by
mountainous terrain.
VFR ACFT may be OPR without
reference to ATC in G758, G756,
G755 and G752.

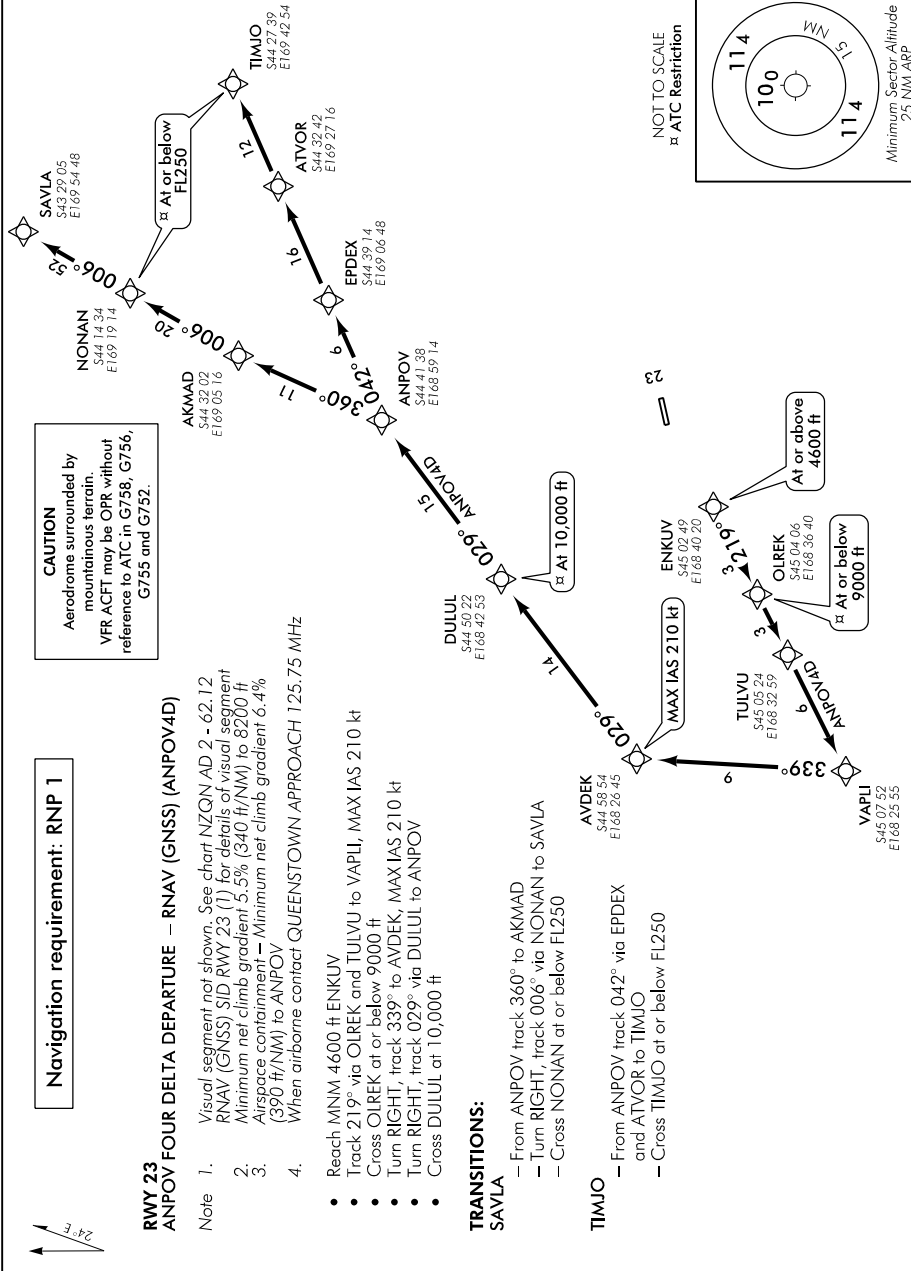
RWY 23 ANPOV FOUR DELTA DEPARTURE – RNAV (GNSS) (ANPOV4D)

- Note 1. Visual segment not shown. See chart NZQN AD 2 - 62.12 RNAV (GNSS) SID RWY 23 (1) for details of visual segment
2. Minimum net climb gradient 5.5% (340 ft/NM) to 8200 ft
3. Airspace containment – Minimum net climb gradient 6.4% (390 ft/NM) to ANPOV
4. When airborne contact QUEENSTOWN APPROACH 125.75 MHz

- Reach MNM 4600 ft ENKLV
- Track 219° via OIUREK and TUIVU to VAPLI, MAX IAS 210 kt
- Cross OIUREK at or below 9000 ft
- Turn RIGHT, track 339° to AVDEK, MAX IAS 210 kt
- Turn RIGHT, track 029° via DUILUL to ANPOV
- Cross DUILUL at 10,000 ft

TRANSITIONS:

- SAVLA**
- From ANPOV track 360° to AKMAD
 - Turn RIGHT, track 006° via NONAN to SAVLA
 - Cross NONAN at or below FL250
- TIMJO**
- From ANPOV track 042° via EPDEX and ATVOR to TIMJO
 - Cross TIMJO at or below FL250



Effective: 8 NOV 18

Changes from 9 NOV 17: Note 4 added.

ELEV 1171

CAT A,B,C

QUEENSTOWN

NZQN

RNAV (GNSS) SID RWY 23 (4)

TOWER: 118.1 128.9

APPROACH: 125.75

ATIS: 126.4

UNATTENDED: 118.1

Navigation requirement: RNP 1

When airborne contact QUEENSTOWN
APPROACH 125.75 MHz

CAUTION

Aerodrome surrounded by
mountainous terrain.
VFR ACFT may be OPR without
reference to ATC in G758, G756,
G755 and G752.

RWY 23

SUNGU FOUR QUEBEC DEPARTURE – RNAV (GNSS) (SUNGU4Q)
Note 1. See chart NZQN AD 2 - 62.12 RNAV (GNSS) SID RWY 23 (1)
for details of visual segment.

- Minimum net climb gradient 5.1% (310 ft/NM) to 6600 ft
- Airspace containment – Minimum net climb gradient 5.4% (330 ft/NM) to 10,000 ft

- Reach MNM 4200 ft ENKUV
- Track 219° via OUREK and TULVU to YAPLI, MAX IAS 210 kt
- Cross OUREK at or below 9000 ft
- Turn LEFT, track 159° to IBVUK
- Turn LEFT, track 116° to SUNGU
- Cross SUNGU at or below FL250

SUNGU FOUR SIERRA DEPARTURE – RNAV (GNSS) (SUNGU4S)

Note 1. See chart NZQN AD 2 - 62.12 RNAV (GNSS) SID RWY 23 (1)
for details of visual segment.

- Minimum net climb gradient 5.6% (340 ft/NM) to LUXIS
- Airspace containment – Minimum net climb gradient 6.7% (410 ft/NM) to FL180

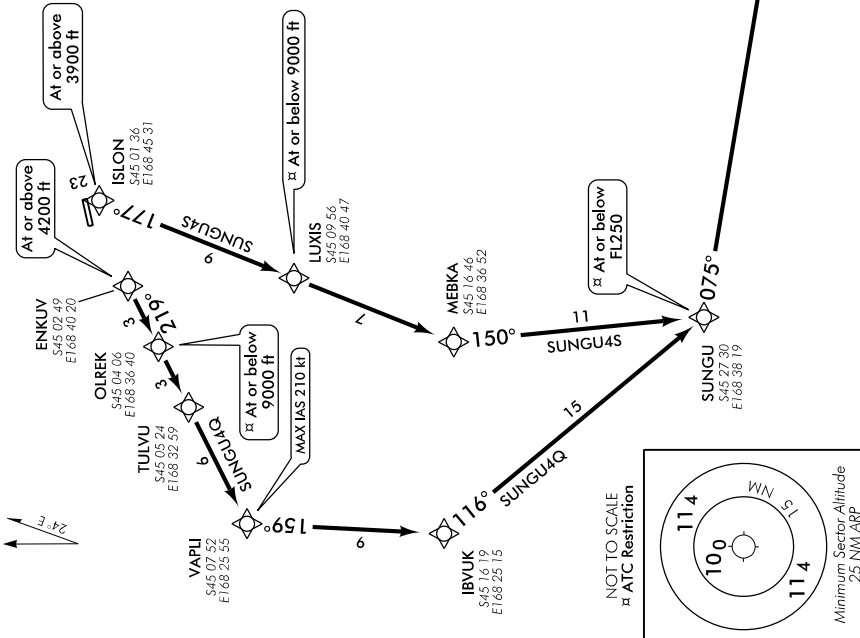
- Reach MNM 3900 ft overhead ISLON
- Track 177° via LUXIS to MEBKA
- Cross LUXIS at or below 9000 ft
- Turn LEFT, track 150° to SUNGU
- Cross SUNGU at or below FL250

TRANSITIONS:

ADLUP

- From SUNGU track 075° to BASOS
- Turn LEFT track 042° to ADLUP

GNRNASID23-4-H



Changes from 9 NOV 17: Airborne FREQ instruction added.