

ELEV 1171

CAT A,B,C

QUEENSTOWN

NZQN

RNAV (GNSS) SID RWY 23 (5)

TOWER: 118.1 128.9

APPROACH: 125.75

ATIS: 126.4

UNATTENDED: 118.1

Navigation requirement: RNP 1

CAUTION

Aerodrome surrounded by mountainous terrain. VFR ACFT may be OPR without reference to ATC in G758, G756, G755 and G752.

RWY 23 SUNGU THREE UNIFORM DEPARTURE - RNAV (GNSS) (SUNGU3U)

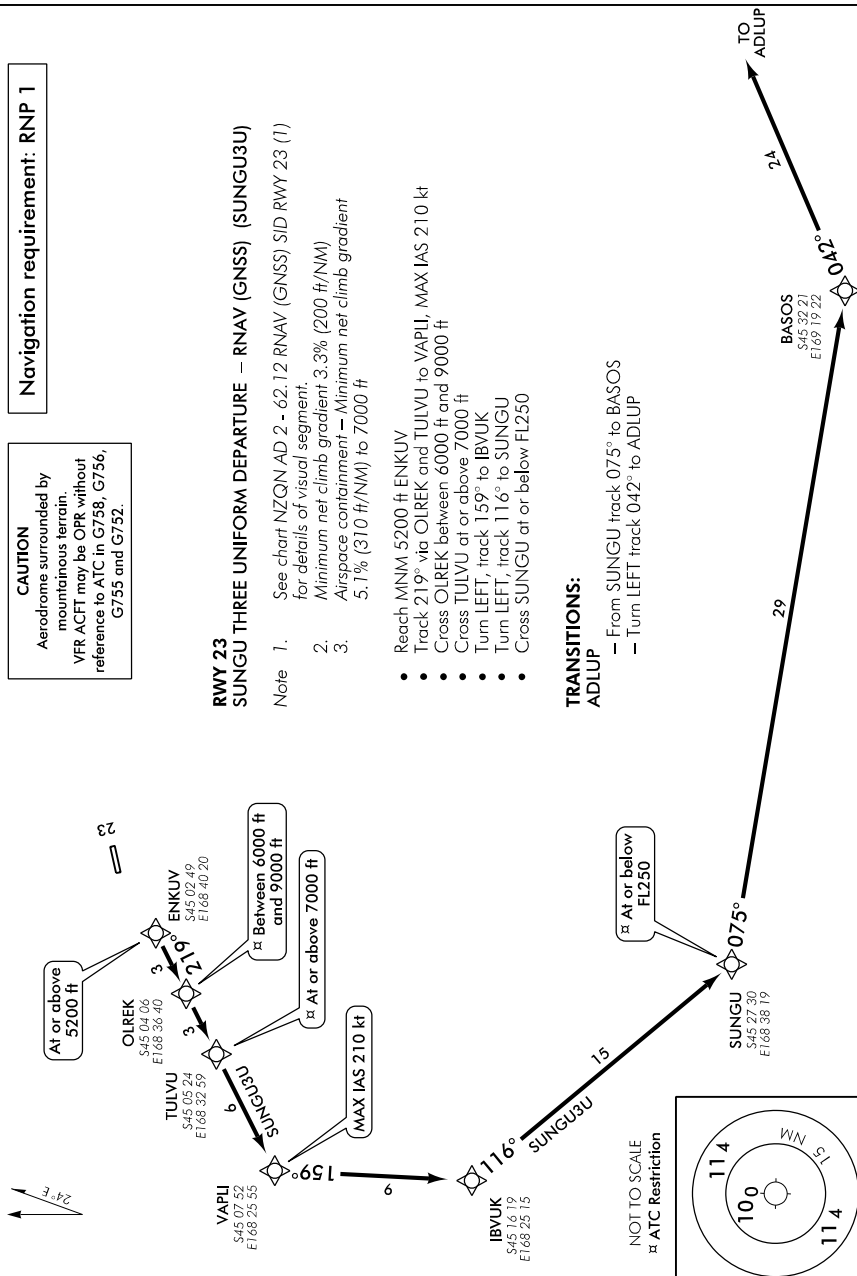
- 1. See chart NZQN AD 2 - 62.12 RNAV (GNSS) SID RWY 23 (1) for details of visual segment.
- 2. Minimum net climb gradient 3.3% (200 ft/NM)
- 3. Airspace containment - Minimum net climb gradient 5.1% (310 ft/NM) to 7000 ft

- Reach MNM 5200 ft ENKUV
- Track 219° via OIUREK and TULVU to VAPLI, MAX IAS 210 kt
- Cross OIUREK between 6000 ft and 9000 ft
- Cross TULVU at or above 7000 ft
- Turn LEFT, track 159° to IBVUK
- Turn LEFT, track 116° to SUNGU
- Cross SUNGU at or below FL250

TRANSITIONS:

- ADLUP - From SUNGU track 075° to BASOS
- ADLUP - Turn LEFT track 042° to ADLUP

CNRNAV/SID23-5-F



Changes from 20 JUL 17: Procedure review.

Effective: 9 NOV 17

ELEV 1171

CAT A,B,C

QUEENSTOWN

NZQN

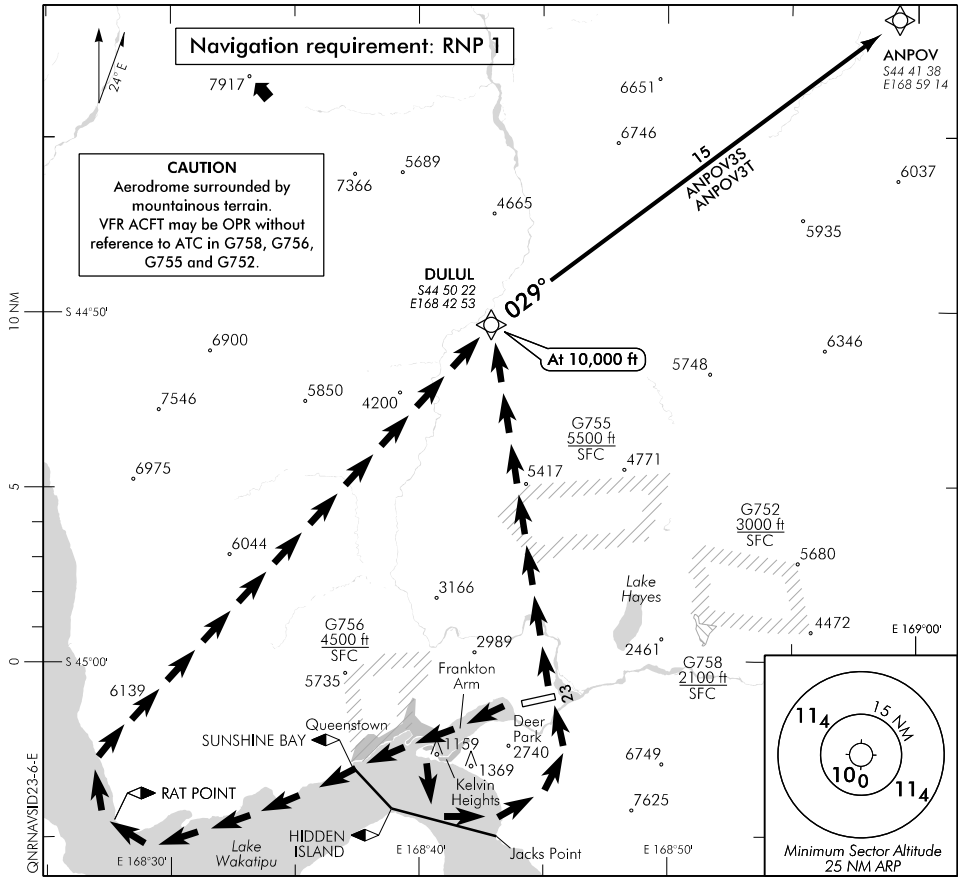
RNAV (GNSS) SID RWY 23 (6)

TOWER: 118.1 128.9

APPROACH: 125.75

ATIS: 126.4

UNATTENDED: 118.1



Changes from 25 MAY 17: Procedure review.

ALL DEPARTURES RWY 23 – Visual Segments

- Note
1. Minimum turn altitude after take-off 1600 ft
 2. When Queenstown Tower on watch: Passing 7000 ft contact QUEENSTOWN APPROACH 125.75 MHz advising departure being flown

← ← ← Denotes visual segment

Maintain own terrain clearance until established overhead Initial Departure Fix (IDF)

Departures via DULUL (ANPOV3S)

- Follow the Frankton Arm until abeam Kelvin Heights
- Turn LEFT around Deer Park remaining north-east of a line SUNSHINE BAY VRP – HIDDEN ISLAND VRP – Jacks Point
- Cross overhead AD and track direct to DULUL (IDF)
- Cross DULUL on track 029° at 10,000 ft or higher as instructed by ATC

Refer chart NZQN AD 2 - 62.18 RNAV (GNSS) SID RWY 23 (7) for details of ANPOV3S

Departures via DULUL (ANPOV3T)

- Follow the Frankton Arm then direct to cross SUNSHINE BAY VRP and track along the northern coast of Lake Wakatipu to RAT POINT VRP
- Turn RIGHT and track direct to DULUL (IDF)
- Remain within 0.5 NM of the coast from SUNSHINE BAY VRP until tracking direct to DULUL
- Cross DULUL on track 029° at 10,000 ft or higher as instructed by ATC

Note: On pilot request, ATC may approve an early right turn to DULUL

Refer chart NZQN AD 2 - 62.18 RNAV (GNSS) SID RWY 23 (7) for details of ANPOV3T

Effective: 9 NOV 17

© Civil Aviation Authority