

ELEV 1171

CAT A,B,C

QUEENSTOWN

NZQN

RNAV (GNSS) SID RWY 23 (7)

TOWER: 118.1 128.9

APPROACH: 125.75

ATIS: 126.4

UNATTENDED: 118.1

QNINRNASID23-7-E



Navigation requirement: RNP 1

ALL DEPARTURES

Note 1. Visual segment not shown.

See chart NZQN AD 2 - 62.17 RNAV (GNSS) SID

RWY 23 (6) for details of visual segment

- Minimum net climb gradient 3.3% (200 ft/NM)

RWY 23

ANPOV THREE SIERRA DEPARTURE - RNAV (GNSS)

- Cross DULUL at 10,000 ft or higher as instructed by ATC
- Track 029° to ANPOV

ANPOV THREE TANGO DEPARTURE - RNAV (GNSS)

- Cross DULUL at 10,000 ft or higher as instructed by ATC
- Track 029° to ANPOV

DULUL
S44 50 22
E168 42 53

AT 10,000 ft

CAUTION

Aerodrome surrounded by mountainous terrain. VFR ACFT may be OPR without reference to ATC in G758, G756, G755 and G752.

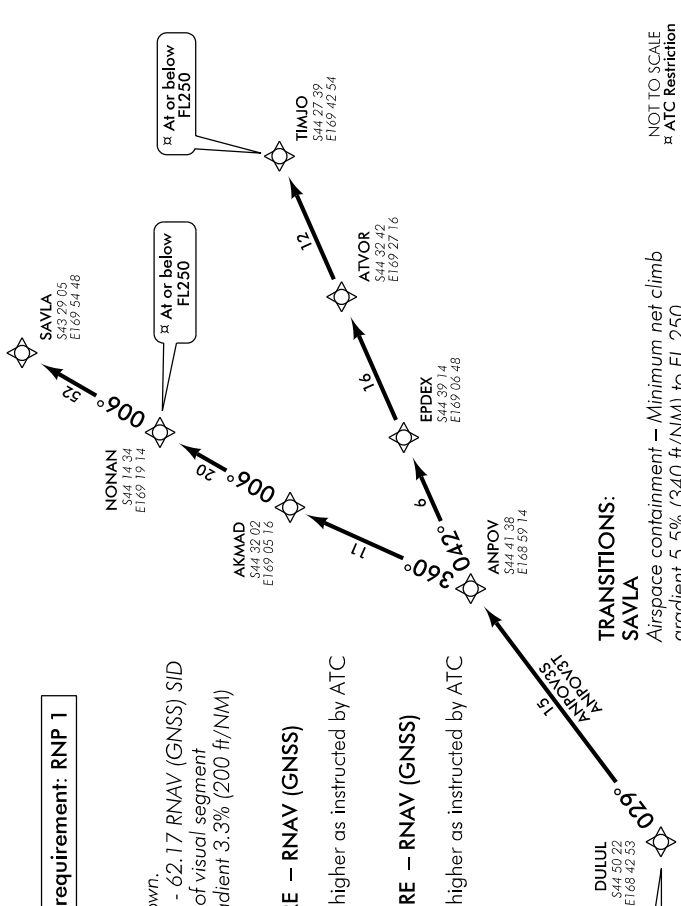
TRANSITIONS:

SAVLA

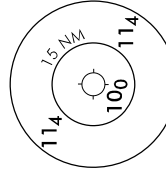
- Airspace containment - Minimum net climb gradient 5.5% (340 ft/NM) to FL 250
- From ANPOV track 360° to AKMAD
- Turn RIGHT, track 006° via NONAN to SAVLA
- Cross NONAN at or below FL250

TIMJO

- From ANPOV track 042° via EPDEX and ATWOR to TIMJO
- Cross TIMJO at or below FL250



NOT TO SCALE
ATC Restriction



Minimum Sector Altitude
25 NM/ARP

Changes from 25 MAY 17: Procedure review.

