

ELEV 1171

CAT A,B,C

QUEENSTOWN

NZQN

BRIDGE SEVEN DEPARTURE

TOWER: 118.1 128.9

APPROACH: 125.75

ATIS: 126.4

UNATTENDED: 118.1

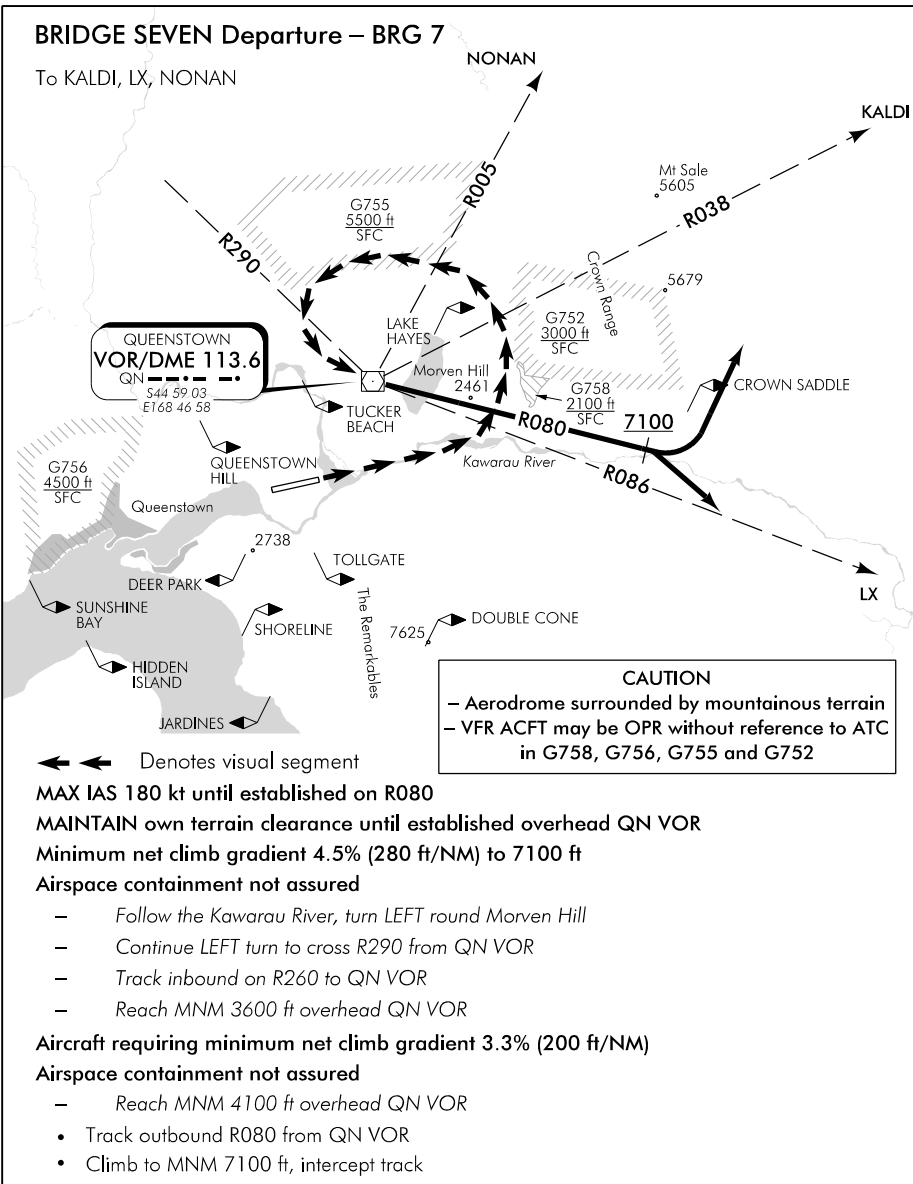
Departure Procedures – Take-off RWY 05

Minimum net climb gradient 3.3% (200 ft/NM) unless higher stated

Minimum turn altitude after take-off 1600 ft

When QUEENSTOWN TOWER on watch: Passing 7000 ft contact QUEENSTOWN APPROACH
125.75 MHz advising departure being flown

ATC Restriction H24 – For flights cleared FL260 or above, maintain FL250 to 50 QN



QNDEBRG7-K

Changes from 25 MAY 17: Procedure review.

Effective: 9 NOV 17

© Civil Aviation Authority

**QUEENSTOWN
BRIDGE SEVEN DEPARTURE**

ELEV 1171

CAT A,B,C

QUEENSTOWN

NZQN

FRANKTON SIX DEPARTURE

TOWER: 118.1 128.9

APPROACH: 125.75

ATIS: 126.4

UNATTENDED: 118.1

Departure Procedures – Take-off RWY 23

Minimum net climb gradient 3.3% (200 ft/NM) unless higher stated

Minimum turn altitude after take-off 1600 ft

When QUEENSTOWN TOWER on watch: Passing 7000 ft contact QUEENSTOWN CONTROL

125.75 MHz advising departure being flown

ATC Restriction H24 – For flights cleared FL260 or above, maintain FL250 to 50 QN

FRANKTON SIX
Departure – FKN 6

To MO, ATHOL, QN

CAUTION
 – Aerodrome surrounded by mountainous terrain
 – VFR ACFT may be OPR without reference to ATC in G758, G756, G755 and G752

← ← Denotes visual segment

MAX IAS 180 kt until established on R214

MAINTAIN own terrain clearance until abeam KELVIN HEIGHTS (R214/5 DME) outbound from QN VOR

Minimum net climb gradient 5.7% (345 ft/NM) to 7500 ft

- Follow Frankton Arm until abeam Kelvin Heights (5 QN DME)
- Turn LEFT around DEER PARK remaining north-east of a line SUNSHINE BAY VRP – HIDDEN ISLAND VRP – Jacks Point
- Intercept R214 from QN VOR
- Reach MNM 4100 ft abeam KELVIN HEIGHTS (IDF 5 QN DME)

Aircraft requiring minimum net climb gradient 3.3% (200 ft/NM)

- Reach MNM 5500 ft abeam KELVIN HEIGHTS (IDF 5 QN DME)
- Track outbound R214 from QN VOR
- Climb to MNM 7500 ft, turn LEFT and intercept track

Changes from 25 MAY 17: Procedure review.

QNDFPKN6-L

Effective: 9 NOV 17