

ELEV 1171

CAT A,B,C

QUEENSTOWN

NZQN

RNAV (RNP) IPNOR THREE ALFA DEPARTURE

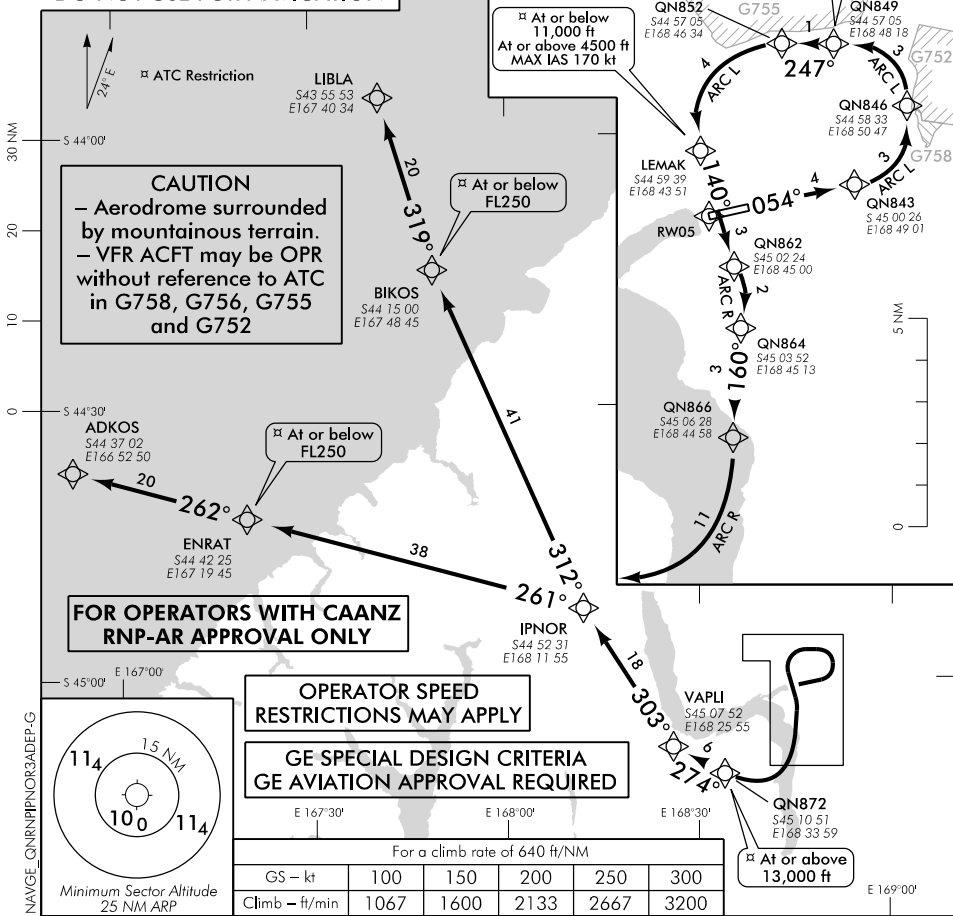
TOWER: 118.1 128.9

APPROACH: 125.75

ATIS: 126.4

UNATTENDED: 118.1

DO NOT USE FOR NAVIGATION



CAUTION
 - Aerodrome surrounded by mountainous terrain.
 - VFR ACFT may be OPR without reference to ATC in G758, G756, G755 and G752

FOR OPERATORS WITH CAANZ RNP-AR APPROVAL ONLY

OPERATOR SPEED RESTRICTIONS MAY APPLY

GE SPECIAL DESIGN CRITERIA GE AVIATION APPROVAL REQUIRED

For a climb rate of 640 ft/NM					
GS - kt	100	150	200	250	300
Climb - ft/min	1067	1600	2133	2667	3200

**DEPARTURE PROCEDURES - TAKE-OFF RWY 05
 IPNOR THREE ALFA DEPARTURE - RNAV (RNP) IPNOR3A**

- Note 1. When QUEENSTOWN TOWER on watch: Passing 7000 ft contact QUEENSTOWN APPROACH 125.75 MHz advising departure being flown
2. ATC requirement: Aircraft to cross DADLU, BEBOB, EKODA or MADOK at cleared level or advise ATC if unable
3. Departure not fully contained in controlled airspace if unable to cross QN849 6000 ft or above

Requirements

- Requires RNP 0.30 or lower to VAPLI
- RF required
- Requires a MNM net climb gradient of 10.5% (640 ft/NM) to 6000 ft, thence 5.1% (311 ft/NM) to 13,000 ft - if unable to comply advise ATC prior to start-up

To ADKOS

- Fly the RNAV (RNP) track to VAPLI, then proceed on RNP 1 transition to ADKOS
- Cross QN849 at or above 6000 ft
- Cross LEMAK at or below 11,000 ft: minimum branch altitude 4500 ft
- Do not exceed 170 kt IAS until turn is complete at LEMAK
- EO Branch Point is LEMAK
- Cross QN872 at or above 13,000 ft
- Cross ENRAT at or below FL250

To LIBLA

- Fly the RNAV (RNP) track to VAPLI, then proceed on RNP 1 transition to LIBLA
- Cross QN849 at or above 6000 ft
- Cross LEMAK at or below 11,000 ft: minimum branch altitude 4500 ft
- Do not exceed 170 kt IAS until turn is complete at LEMAK
- EO Branch Point is LEMAK
- Cross QN872 at or above 13,000 ft
- Cross BIKOS at or below FL250

Effective: 9 NOV 17

Changes from 25 MAY 17: Procedure review.

ELEV 1171

CAT A,B,C

QUEENSTOWN

NZQN

RNAV (RNP) IPNOR THREE BRAVO DEPARTURE

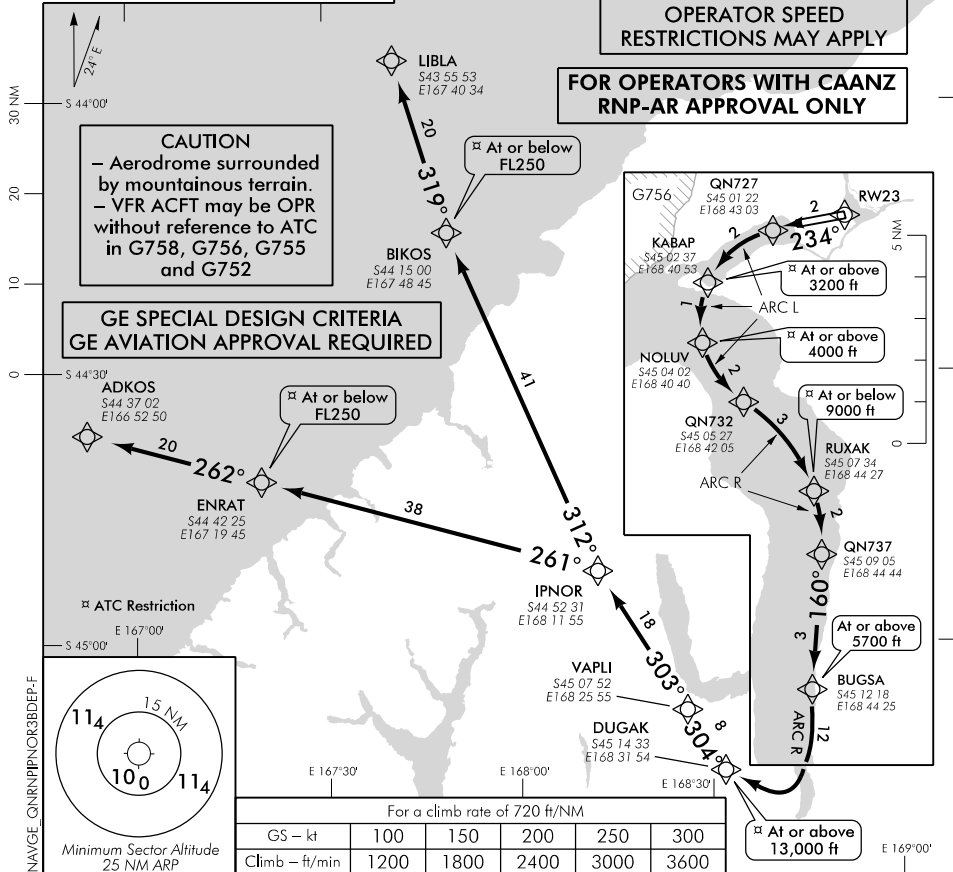
TOWER: 118.1 128.9

APPROACH: 125.75

ATIS: 126.4

UNATTENDED: 118.1

DO NOT USE FOR NAVIGATION



Changes from 25 MAY 17: Procedure review.

DEPARTURE PROCEDURES – TAKE-OFF RWY 23

IPNOR THREE BRAVO DEPARTURE – RNAV (RNP) IPNOR3B

- Note 1. When QUEENSTOWN TOWER on watch: Passing 7000 ft contact QUEENSTOWN APPROACH 125.75 advising departure being flown
2. ATC requirement: Aircraft to cross DADLU, BEBOB, EKODA or MADOK at cleared level or advise ATC if unable

Requirements

- Requires RNP 0.30 or lower to VAPLI
- RF required
- Requires a MNM net climb gradient of 11.8% (720 ft/NM) to 3200 ft, thence 9.1% (552 ft/NM) to 4000 ft, thence 6.9% (422 ft/NM) to 13,000 ft – if unable to comply advise ATC prior to start-up

To ADKOS

- Fly the RNAV (RNP) track to VAPLI, thence proceed on RNP 1 transition to ADKOS
- Cross KABAP at or above 3200 ft
- Cross NOLUV at or above 4000 ft
- Cross RUXAK at or below 9000 ft
- Cross BUGSA at or above 5700 ft
- Cross DUGAK at or above 13,000 ft
- Cross ENRAT at or below FL250
- EO Branch Point is BUGSA

To LIBLA

- Fly the RNAV (RNP) track to VAPLI, thence proceed on RNP 1 transition to LIBLA
- Cross KABAP at or above 3200 ft
- Cross NOLUV at or above 4000 ft
- Cross RUXAK at or below 9000 ft
- Cross BUGSA at or above 5700 ft
- Cross DUGAK at or above 13,000 ft
- Cross BIKOS at or below FL250
- EO Branch Point is BUGSA

Effective: 9 NOV 17