

ELEV 1171

CAT A,B,C

QUEENSTOWN

NZQN

RNAV (GNSS) SID RWY 05 (3)

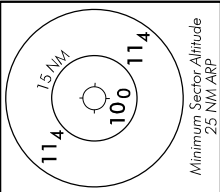
TOWER: 118.1 128.9

APPROACH: 125.75

ATIS: 126.4

UNATTENDED: 118.1

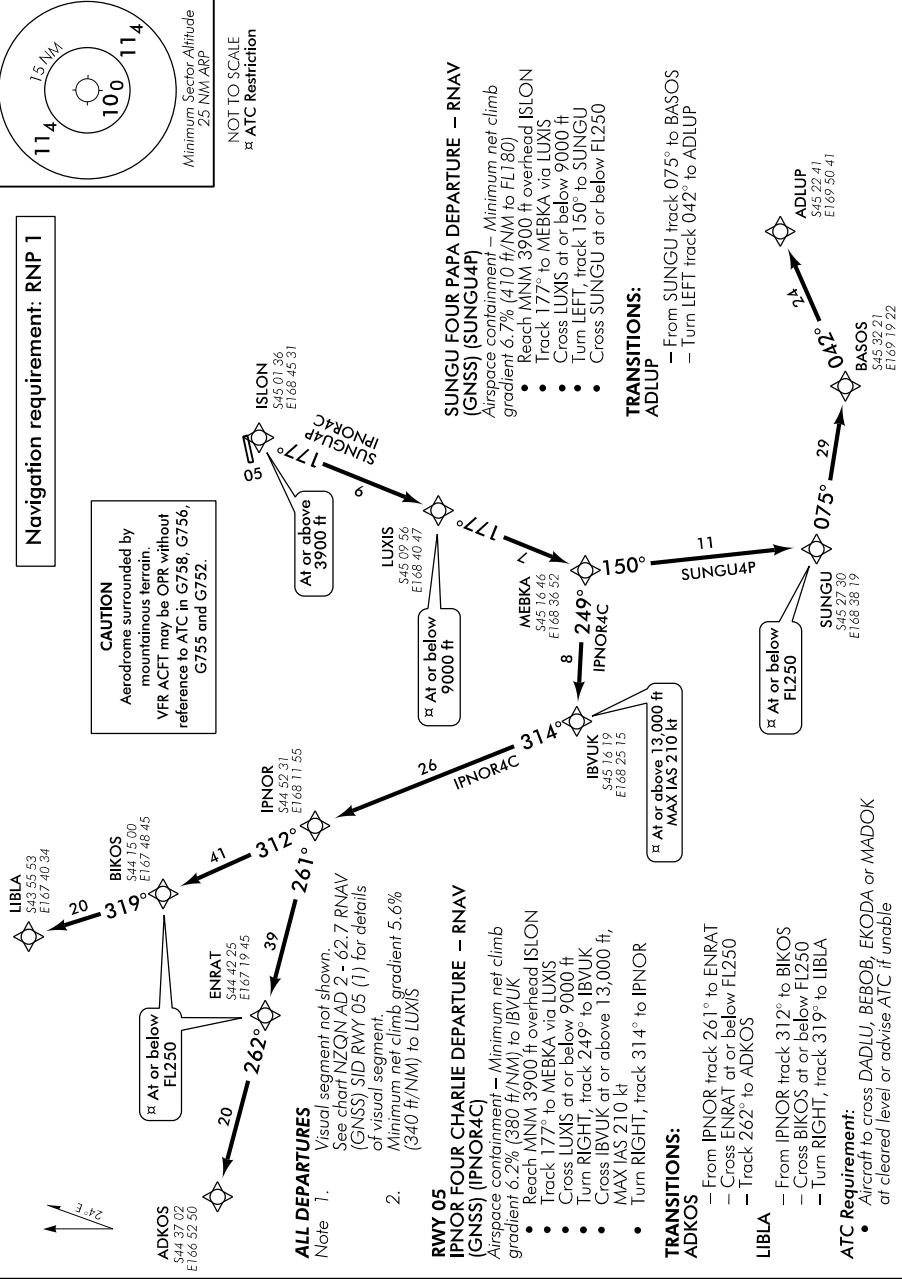
CNRNAV/SID05-34



NOT TO SCALE
ATC Restriction

Navigation requirement: RNP 1

CAUTION
Aerodrome surrounded by mountainous terrain. VFR ACFT may be OPR without reference to ATC in G738, G756, G755 and G752.



ALL DEPARTURES

- Note 1. Visual segment not shown. See chart NZQN AD 2 - 62.7 RNAV (GNSS) SID RWY 05 (1) for details of visual segment.
 2. Minimum net climb gradient 5.6% (340 ft/NM) to LUXIS

RWY 05 IPNOR FOUR CHARLIE DEPARTURE - RNAV (GNSS) (IPNOR4C)

- Airspace containment - Minimum net climb gradient 6.2% (380 ft/NM) to IBVUK
- Reach MNM 3900 ft overhead ISLON
 - Track 177° to MEBKA via LUXIS
 - Cross LUXIS at or below 9000 ft
 - Turn RIGHT, track 249° to IBVUK
 - Cross IBVUK at or above 13,000 ft, MAX IAS 210 kt
 - Turn RIGHT, track 314° to IPNOR

TRANSITIONS:

- ADKOS**
- From IPNOR track 261° to ENRAT
 - Cross ENRAT at or below FL250
 - Track 262° to ADKOS

LIBLA

- From IPNOR track 312° to BIKOS
- Cross BIKOS at or below FL250
- Turn RIGHT, track 319° to LIBLA

ATC Requirement:

- Aircraft to cross DADLU, BEBOB, EKODA or MADOK at cleared level or advise ATC if unable

SUNGU FOUR PAPA DEPARTURE - RNAV (GNSS) (SUNGU4P)

- Airspace containment - Minimum net climb gradient 6.7% (410 ft/NM) to FL180
- Reach MNM 3900 ft overhead ISLON
 - Track 177° to MEBKA via LUXIS
 - Cross LUXIS at or below 9000 ft
 - Turn LEFT, track 150° to SUNGU
 - Cross SUNGU at or below FL250

TRANSITIONS:

- ADLUP**
- From SUNGU track 075° to BASOS
 - Turn LEFT track 042° to ADLUP

Changes from 20 JUL 17: Procedure review.

ELEV 1171

CAT A,B,C

QUEENSTOWN

NZQN

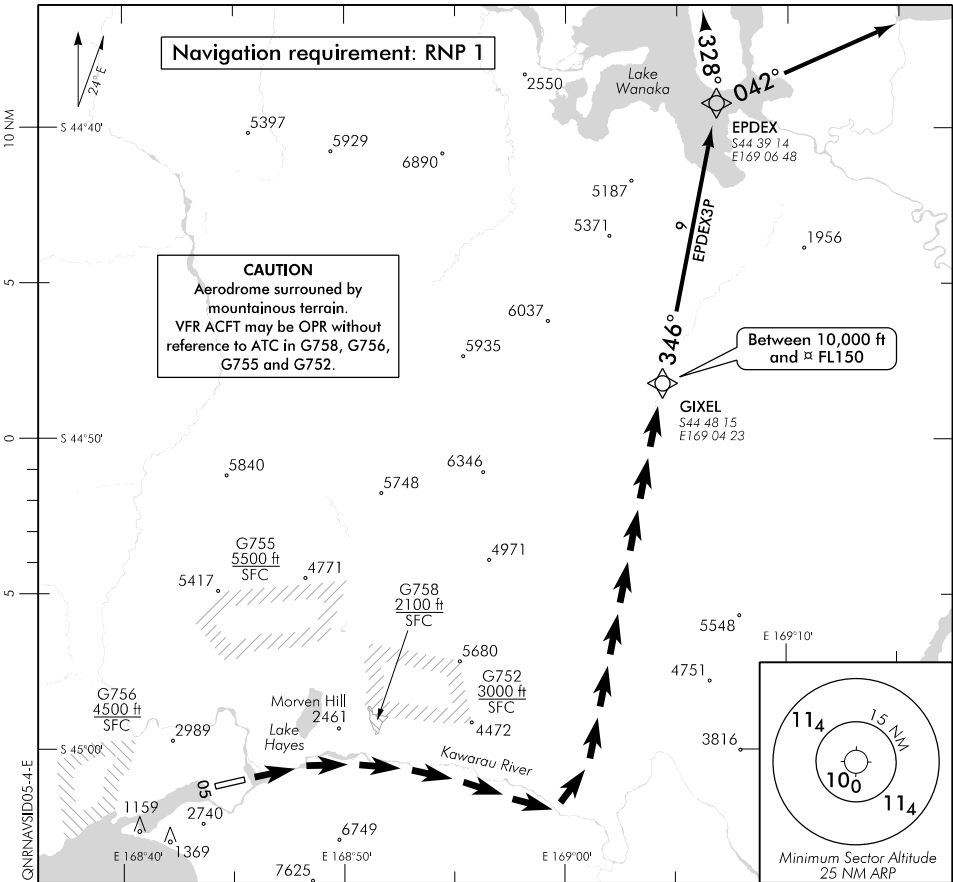
RNAV (GNSS) SID RWY 05 (4)

TOWER: 118.1 128.9

APPROACH: 125.75

ATIS: 126.4

UNATTENDED: 118.1



Changes from 25 MAY 17: Minor track adjustment.

ALL DEPARTURES RWY 05 – Visual Segments

- Note
1. Minimum turn altitude after take-off 1600 ft
 2. When Queenstown Tower on watch: Passing 7000 ft contact QUEENSTOWN APPROACH 125.75 MHz advising departure being flown

← ← Denotes visual segment

Maintain own terrain clearance until established overhead Initial Departure Fix (IDF)

Departures via GIXEL (EPDEX3P)

- Follow the Kawarau River/Gibbston Valley
- Turn LEFT to intercept track 346° to GIXEL (IDF)
- Reach MNM 10,000 ft MAX FL150 overhead GIXEL

Refer chart NZQN AD 2 - 62.11 RNAV (GNSS) SID RWY 05 (5) for details of EPDEX3P SID

Effective: 9 NOV 17