

ELEV 1171

NZQN

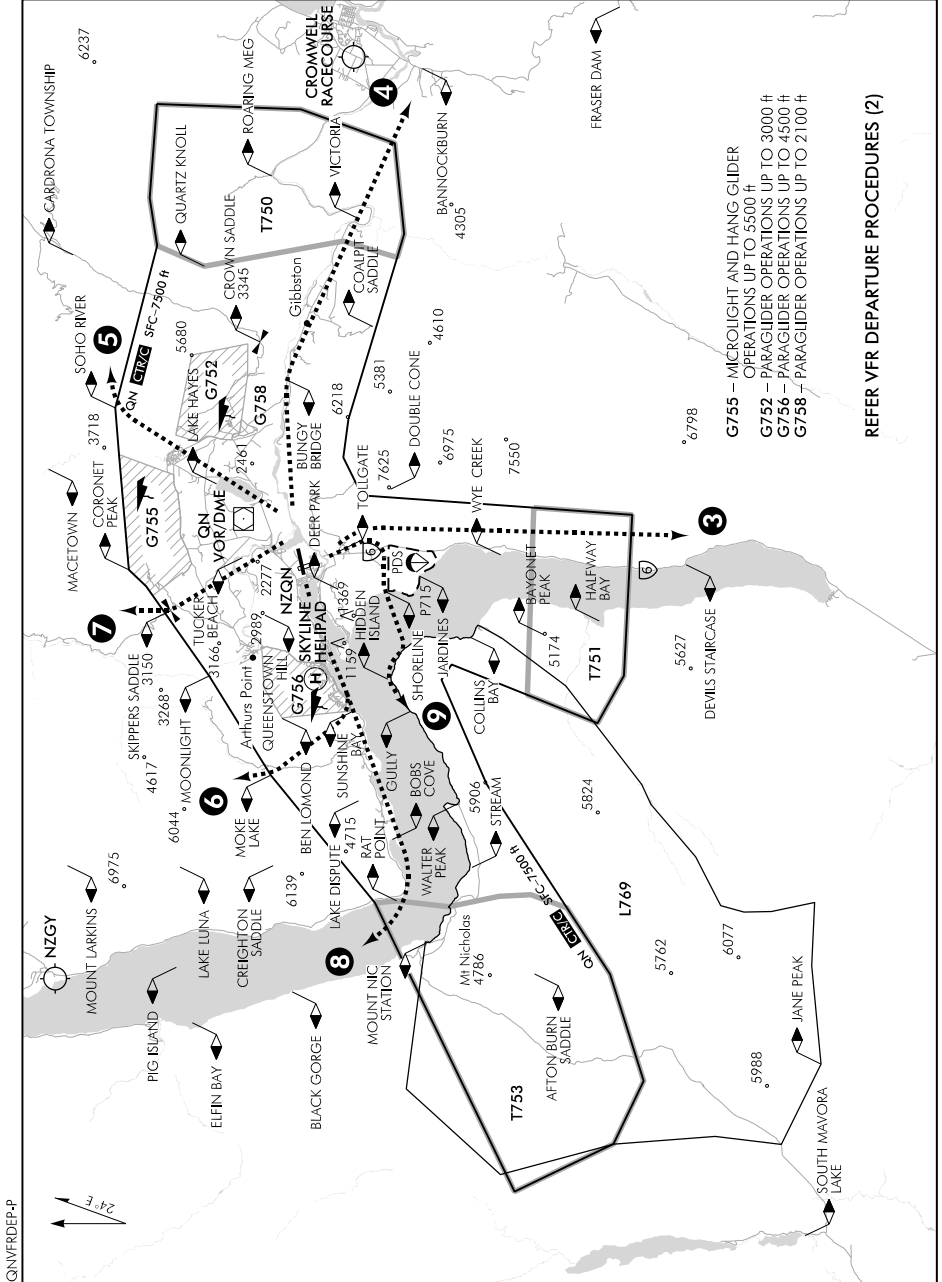
TOWER: 118.1 128.9

ATIS: 126.4

# QUEENSTOWN

## VFR DEPARTURE PROCEDURES (1)

UNATTENDED: 118.1



- G755 - MICROLIGHT AND HANG GLIDER OPERATIONS UP TO 3500 ft
- G752 - PARAGLIDER OPERATIONS UP TO 3000 ft
- G756 - PARAGLIDER OPERATIONS UP TO 4500 ft
- G758 - PARAGLIDER OPERATIONS UP TO 2100 ft

REFER VFR DEPARTURE PROCEDURES (2)

QNVFRDEP-P



Changes from 10 NOV 16: GULLY DEP route added.

Effective: 9 NOV 17

© Civil Aviation Authority

# QUEENSTOWN VFR DEPARTURE PROCEDURES (1)

ELEV 1171

NZQN

TOWER: 118.1 128.9

DELIVERY: 121.9

ATIS: 126.4

UNATTENDED: 118.1

**QUEENSTOWN****VFR DEPARTURE PROCEDURES (2)****REFER ALSO VISUAL NAVIGATION CHARTS****For VFR flights departing Queenstown**

See VFR Departures page for information and instructions regarding departing at Queenstown.

**Departures all runways** — follow published runway circuit directions except that for RWY 14 Moke Lake or Rat Point departures make a right turn south of Deer Park for Sunshine Bay, remain north of and clear of Jardines PDS. Ensure terrain clearance and report clear of Queenstown CTR/C.

When assigned one of the following departure procedures, follow the procedure as detailed:

**Designator****Route Description**

① Devils Staircase Dep	Track <b>east</b> of Highway ⑥ to abeam Devils Staircase 3500 ft or below.
② Victoria Dep	Track to Victoria via Bungy Bridge 4500 ft or below.
③ Soho River Dep	Track to Soho River via Arrowtown and Soho River 6500 ft or below.
④ Moke Lake Dep	Track via Sunshine Bay to Moke Lake 6000 ft or below. If departing off RWY 14 make a right turn south of Deer Park for Sunshine Bay, remain <b>north</b> of and clear of Jardines PDS.
⑤ Skippers Saddle Dep	Track <b>east</b> of Shotover River to Tucker Beach then direct to Skippers Saddle 5000 ft or below.
⑥ Rat Point Dep	Track via Sunshine Bay to Rat Point 4500 ft or below. If departing off RWY 14 make a right turn south of Deer Park for Sunshine Bay, remain <b>north</b> of and clear of Jardines PDS.
⑦ Gully Dep	Track via Tollgate, Shoreline direct, or south of, to Hidden Island, to Gully 2700 ft or below. Remain clear of Jardines PDS. Remain on or south of a line Shoreline VRP to Hidden Island VRP. From Gully track direct to cleared destination 6500 ft or below.

Operator specific departure clearances will be issued to Jardines parachute operators with relevant traffic information passed to other VFR flights.