

ELEV 288

NZRC

INVERCARGILL TOWER: 118.5 122.4

RYANS CREEK
ARRIVAL/DEPARTURE

UNATTENDED: 130.2

Arrival procedures

Departure off RWY 22/04 Invercargill:

- Intercept R172 NV VOR to be at 2500ft by 10 NV DME
- At 15 NV DME descend to minimum 1200ft

If not visual by 20 NV DME:

- Turn left to intercept R172 NV VOR, climb to 2500ft
- Return to Invercargill

Departure procedures

- Contact Invercargill Tower for ATC clearance prior to departure
- Maintain VMC to R172 NV VOR, 20 NV DME, minimum 1200ft
- Continue climb to 2500ft to NV VOR or as instructed

IFR Landing		
	Day	Night
All	1200-5	NA

IFR Take-off		
	Day	Night
All	600-5	1200-5 ¹

¹ Take-off not permitted RWY 04



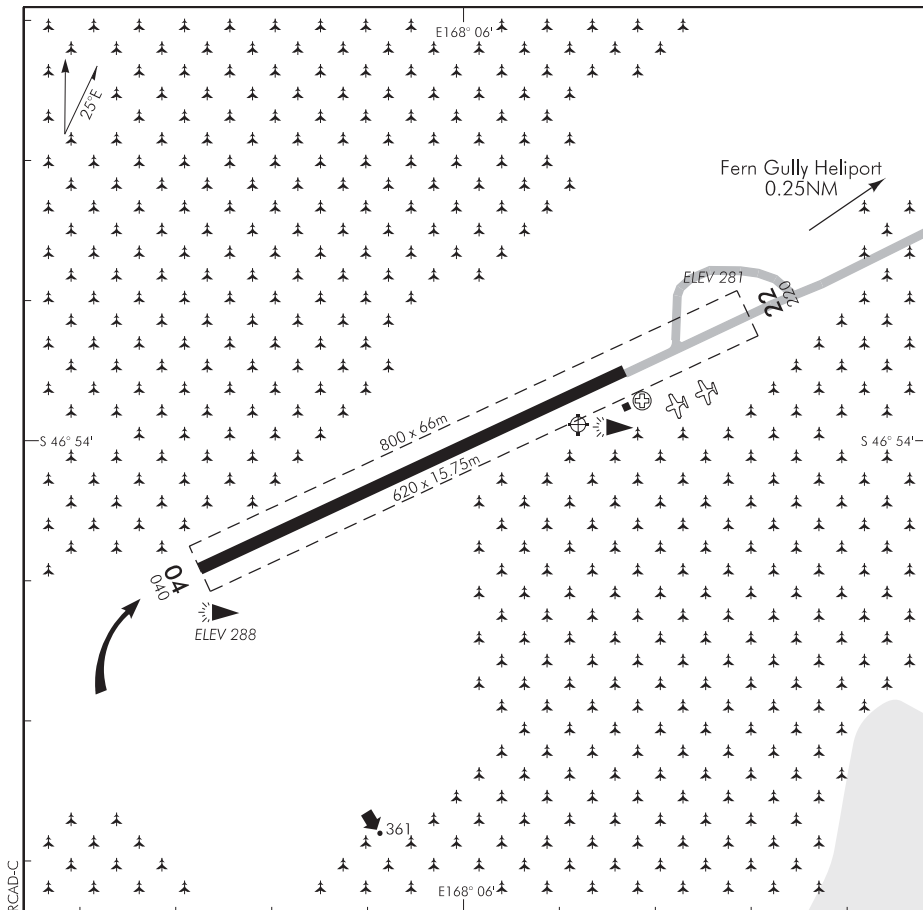
ELEV 288

NZRC

NON-CERTIFICATED

**RYANS CREEK
AERODROME**

UNATTENDED: 130.2



Changes from 12 FEB 09: RWY 04/22 LEN reduced.

1. Circuit: RWY 04 — Right hand
RWY 22 — Left hand
2. Telephone at Halfmoon Bay.
3. **CAUTION:** Windshear.
4. **CAUTION:** Fern Gully heliport lies APRX 0.25NM to NE of RWY 22 THR in a gully, slightly north of extended RWY CL. Aircraft arriving on RWY 22 or taking off on RWY 04 should be vigilant for helicopters operating nearby.
5. Aircraft operations should be confined to sealed areas only.
6. 180m sealed/clay extension to NE of RWY 04/22 NA for general operations. 7.5m wide starter extension for RWY 22 available to approved operators only.

S 46 53 59 E 168 06 07

Effective: 11 FEB 10

© Civil Aviation Authority

**RYANS CREEK
AERODROME**

NZRC

RWY

RWY	SFC	Strength	Gp	Slope	ASDA	Take-off distance			LDG DIST
						1:20	1:30	1:40	
04 22	B/Gr	ESWL 2260	4	0.4D 0.4U	620	620 620			620 620

MINIMA

IFR Take-off		
RWY	Day	Night
ALL	600-5	1200-5 ¹

¹ Take-off not permitted RWY 04.**LIGHTING**

Portable lighting AVBL for company use and emergencies only.

WDI

FACILITIESRFS: CAT 1. Fire extinguisher located in green shed adjacent to eastern windsock.
Available for regular air transport passenger services.**SUPPLEMENTARY**Operator: South East Air, PO Box 860, Invercargill
Tel (03) 218 9129 Fax (03) 214 4681

Availability: Available to approved pilots only.

Available for limited use subject to prior agreement of the operator.