

ELEV 938

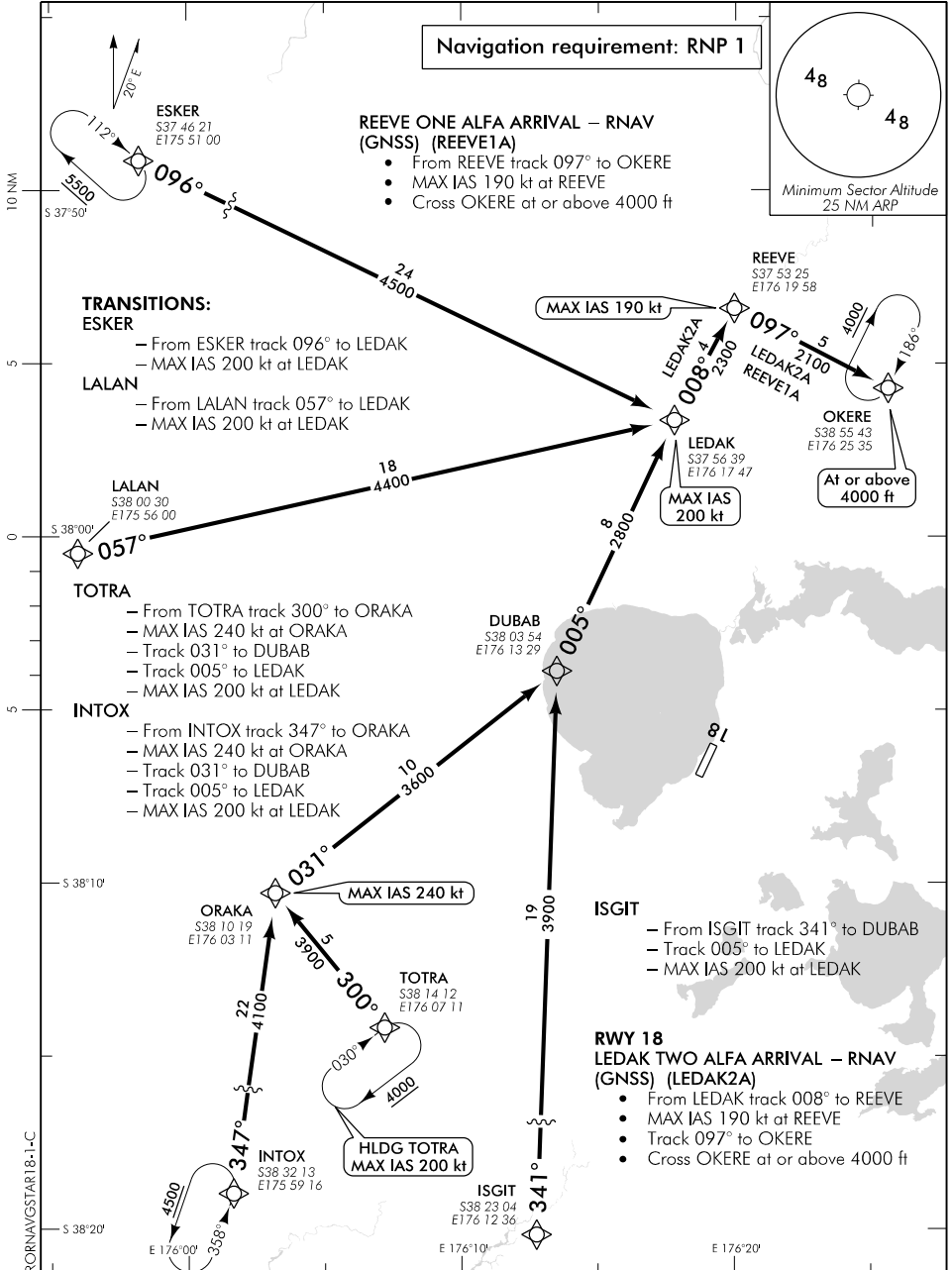
CAT A,B,C

ROTORUA

NZRO

RNAV (GNSS) STAR RWY 18 (1)

CHRISTCHURCH CONTROL: 119.5 123.8 TOWER: 121.2 120.1 ATIS: 128.8 UNATTENDED: 121.2



Effective: 25 MAY 17

ELEV 938

CAT A,B,C

ROTORUA

NZRO

RNAV (GNSS) STAR RWY 18 (2)

CHRISTCHURCH CONTROL: 119.5 123.8 TOWER: 121.2 120.1 ATIS: 128.8 UNATTENDED: 121.2

Navigation requirement: RNP 1

RWY 18 LEDAK TWO CHARLIE ARRIVAL

- RNAV (GNSS) (LEDAK2C)
- From LEDAK track 095° to NIKOR
- Cross NIKOR at or above 3000 ft, MAX IAS 180 kt

TRANSITIONS:

ESKER

- From ESKER track 096° to LEDAK

GOBUK

- From GOBUK track 116° to LEDAK
- Cross LEDAK at or above 4000 ft

LALAN

- From LALAN track 057° to LEDAK

INTOX

- From INTOX track 347° to ORAKA
- MAX IAS 240 kt at ORAKA
- Track 031° to DUBAB
- Track 005° to LEDAK
- Cross LEDAK at or above 4000 ft

GOBUK
S37 54 46
E176 15 29

LEDAK
S37 56 39
E176 17 47

Except ESKER and LALAN Transitions
At or above 4000 ft

NIKOR
S37 58 47
E176 23 30

At or above 3000 ft
MAX IAS 180 kt

DUBAB
S38 03 54
E176 13 29

TOTRA

- From TOTRA track 300° to ORAKA
- MAX IAS 240 kt at ORAKA
- Track 031° to DUBAB
- Track 005° to LEDAK
- Cross LEDAK at or above 4000 ft

ISGIT

- From ISGIT track 341° to DUBAB
- Track 005° to LEDAK
- Cross LEDAK at or above 4000 ft

ORAKA
S38 10 19
E176 03 11

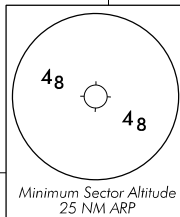
MAX IAS 240 kt

TOTRA
S38 14 12
E176 07 11

INTOX
S38 32 13
E175 59 16

HLDG TOTRA
MAX IAS 200 kt

ISGIT
S38 23 04
E176 12 36



Changes from 30 MAR 17: ARIKA transition removed, ISGIT and GOBUK transitions added.